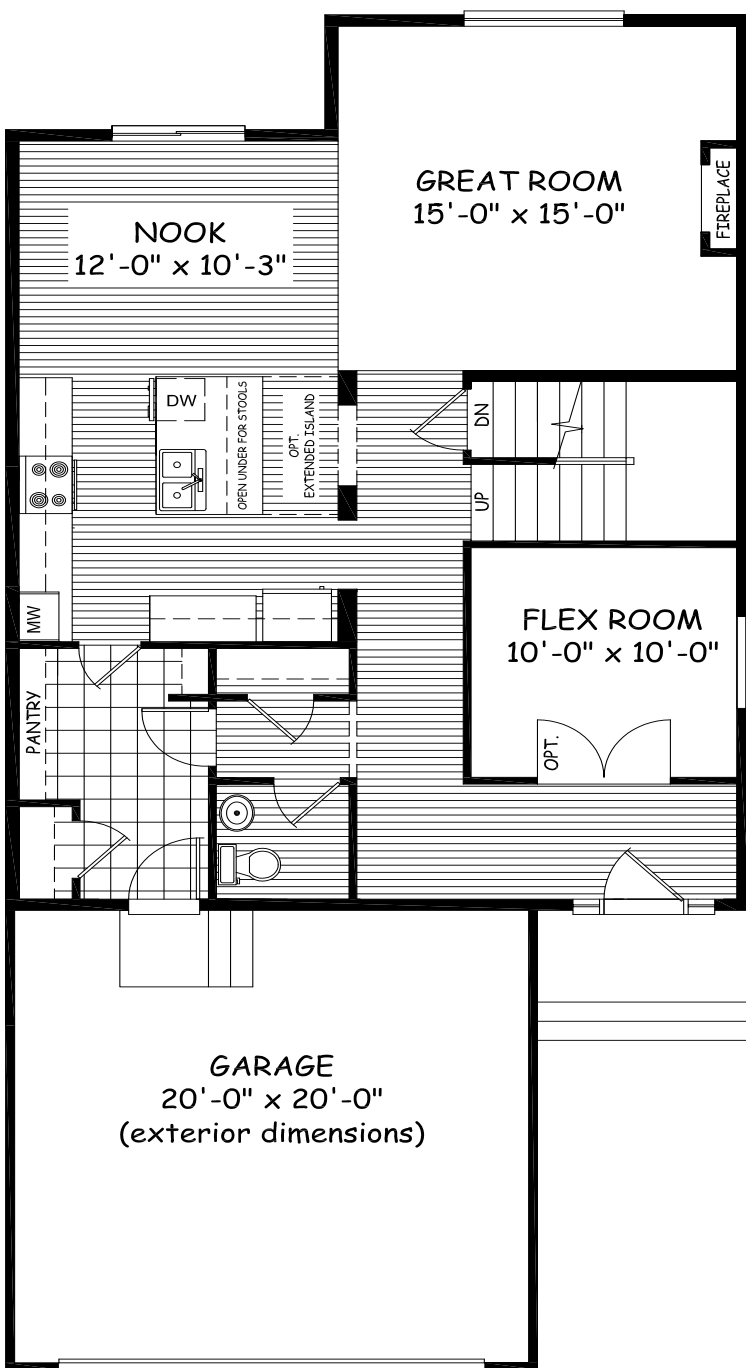




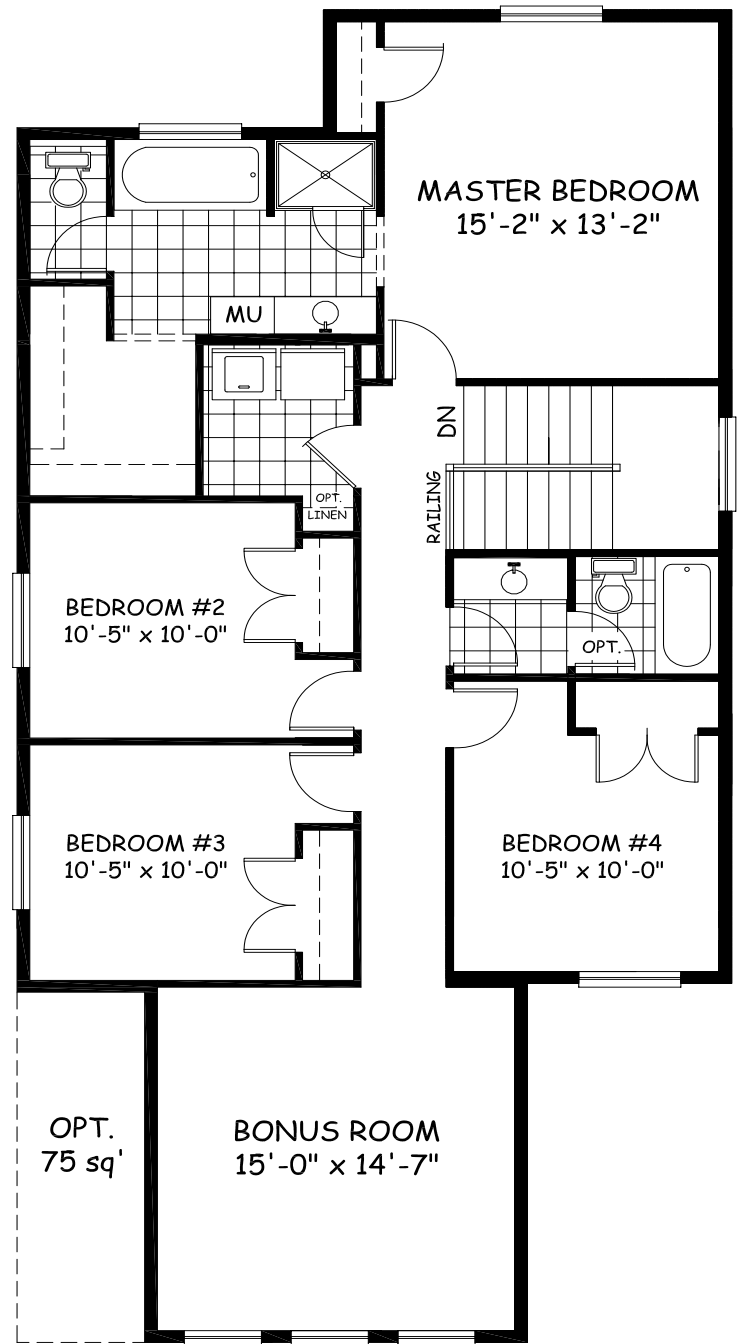
DOUGLAS HOMES  
— PERFECT FIT —

# Rhodes 3

2290 sqft



Main Floor 1018 sqft



Upper Floor 1172 sqft

28.02-15.58

douglashomes.net 717-0505

Artist's representation, may not be exactly as shown - all dimensions are approximate  
All designs and plans are the exclusive property of Douglas Homes Ltd.

