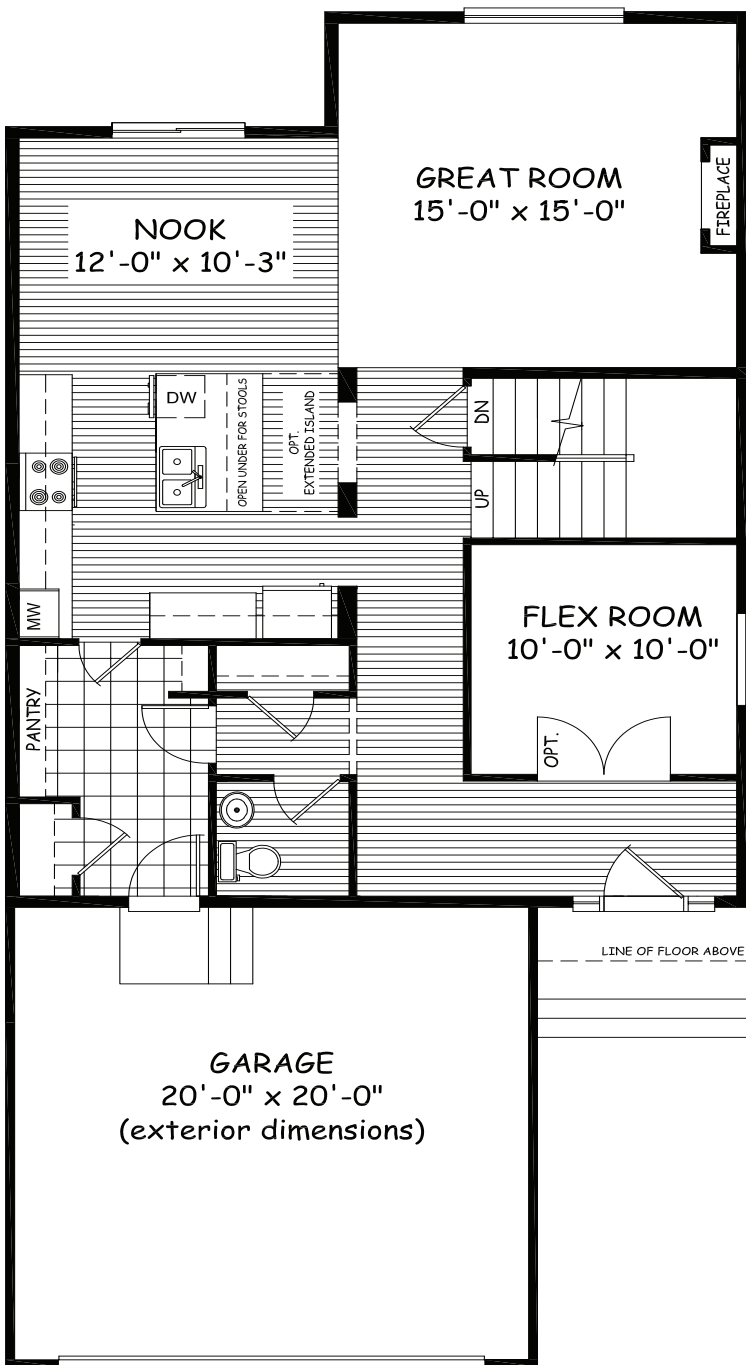




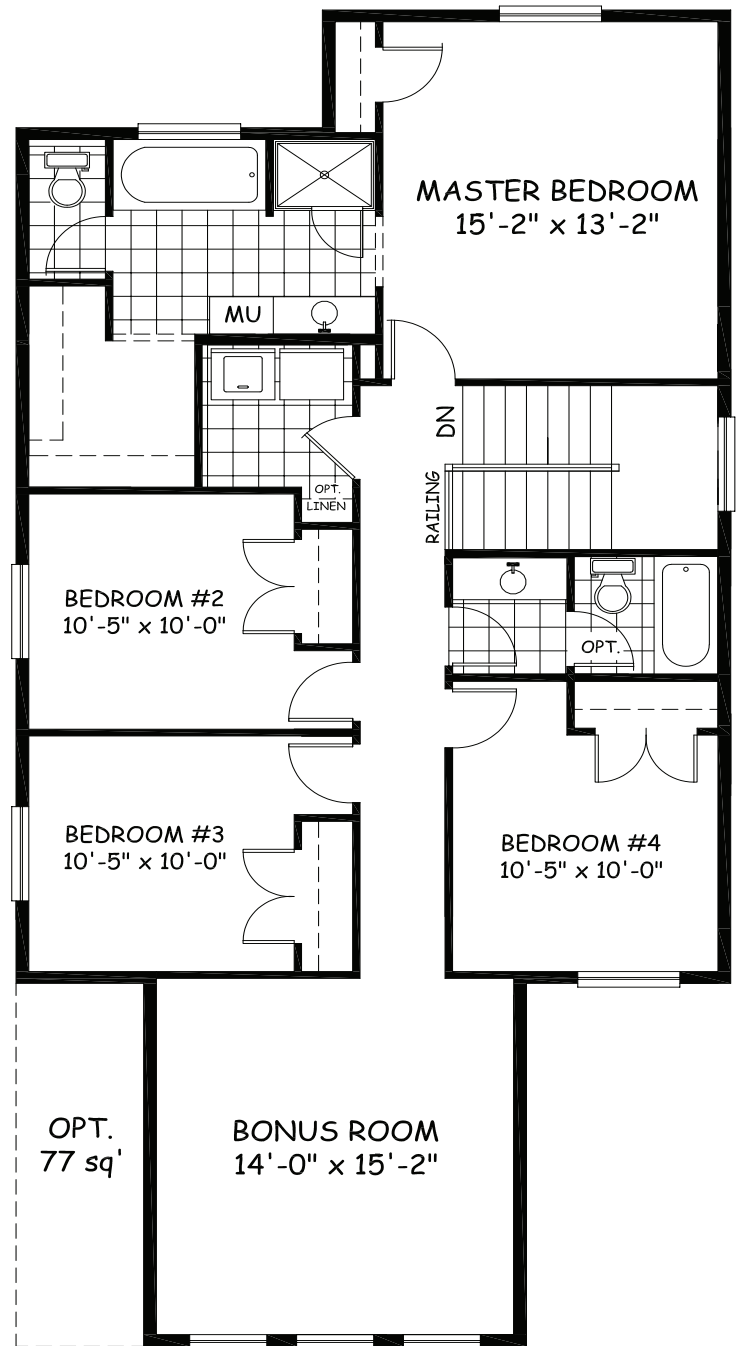
DOUGLAS HOMES
PERFECT FIT

Rhodes 3

2290 sqft



Main Floor 1032 sqft



Upper Floor 1258 sqft

28.02-15.58

douglashomes.net 717-0505

Artist's representation, may not be exactly as shown - all dimensions are approximate
All designs and plans are the exclusive property of Douglas Homes Ltd.

