

Scottsdale - 2228 sq.ft.

102 Stonemere Green in Chestermere, AB



incl. lot and GST



DOUGLAS HOMES

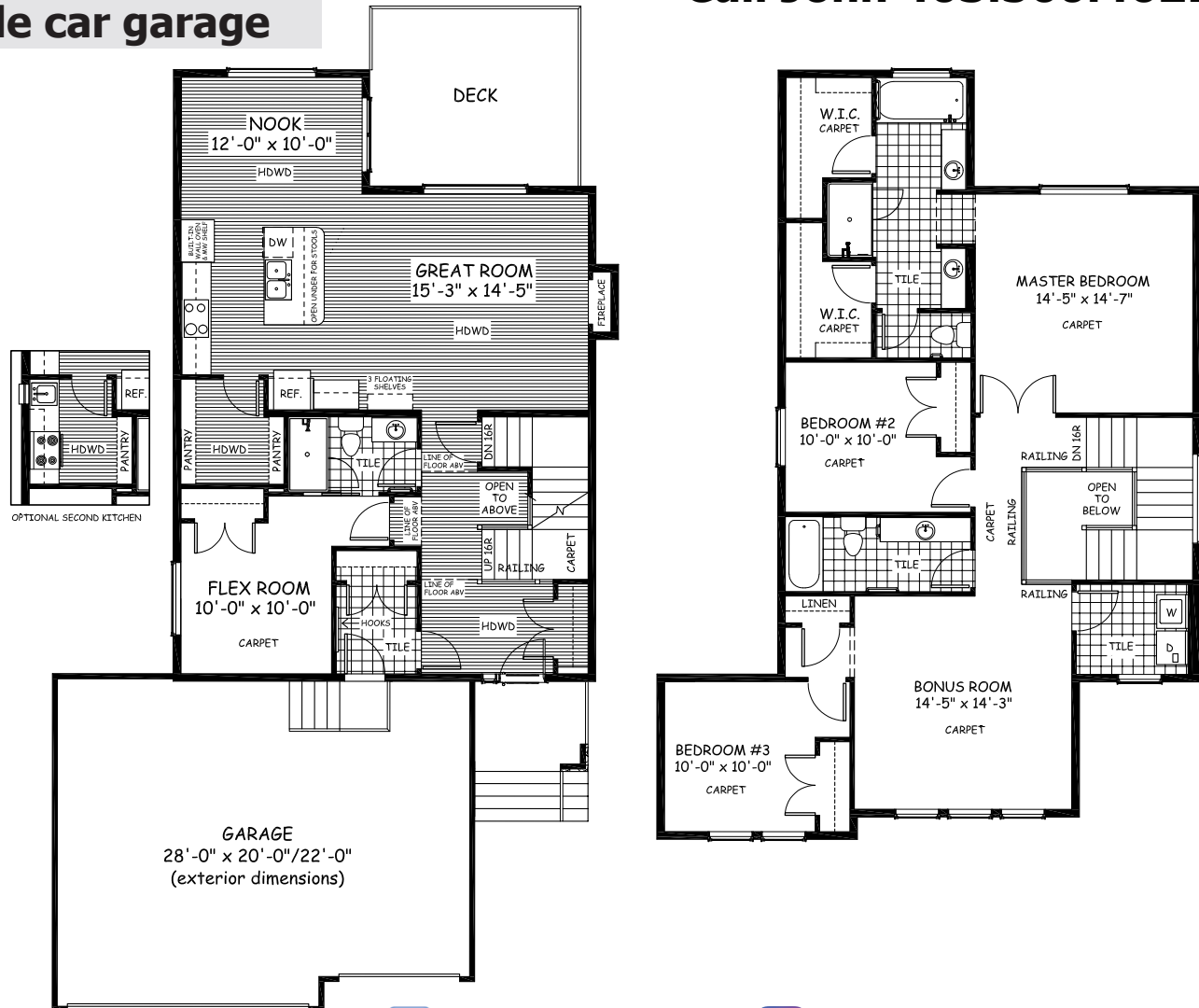
Features

- 3 beds, 3 baths, bonus room, flex room
- Chef's kitchen package
- Master ensuite has double vanities, tiled shower, and drop-in tub
- Hardwood throughout main floor
- Boxed out gas fireplace
- Upper floor laundry
- 9' basement
- 9' main floor ceilings with large windows
- Quartz countertops



Call John 403.560.4621

Walkout basement
Triple car garage



www.douglashomes.net



Douglas Homes Ltd



@douglashomesltd



@DouglasHomesLtd

Artist's representation, may not be exactly as shown - all dimensions are approximate. Douglas Homes reserves the right to make changes/substitutions to improve this home while under construction. Pricing is subject to change without notice and is valid only on the day of issue. All designs and plans are the exclusive property of Douglas Homes Ltd.