

# Playa Del Carmen - 2543 sq.ft.

112 Kinniburgh Drive in Chestermere, AB



DOUGLAS HOMES

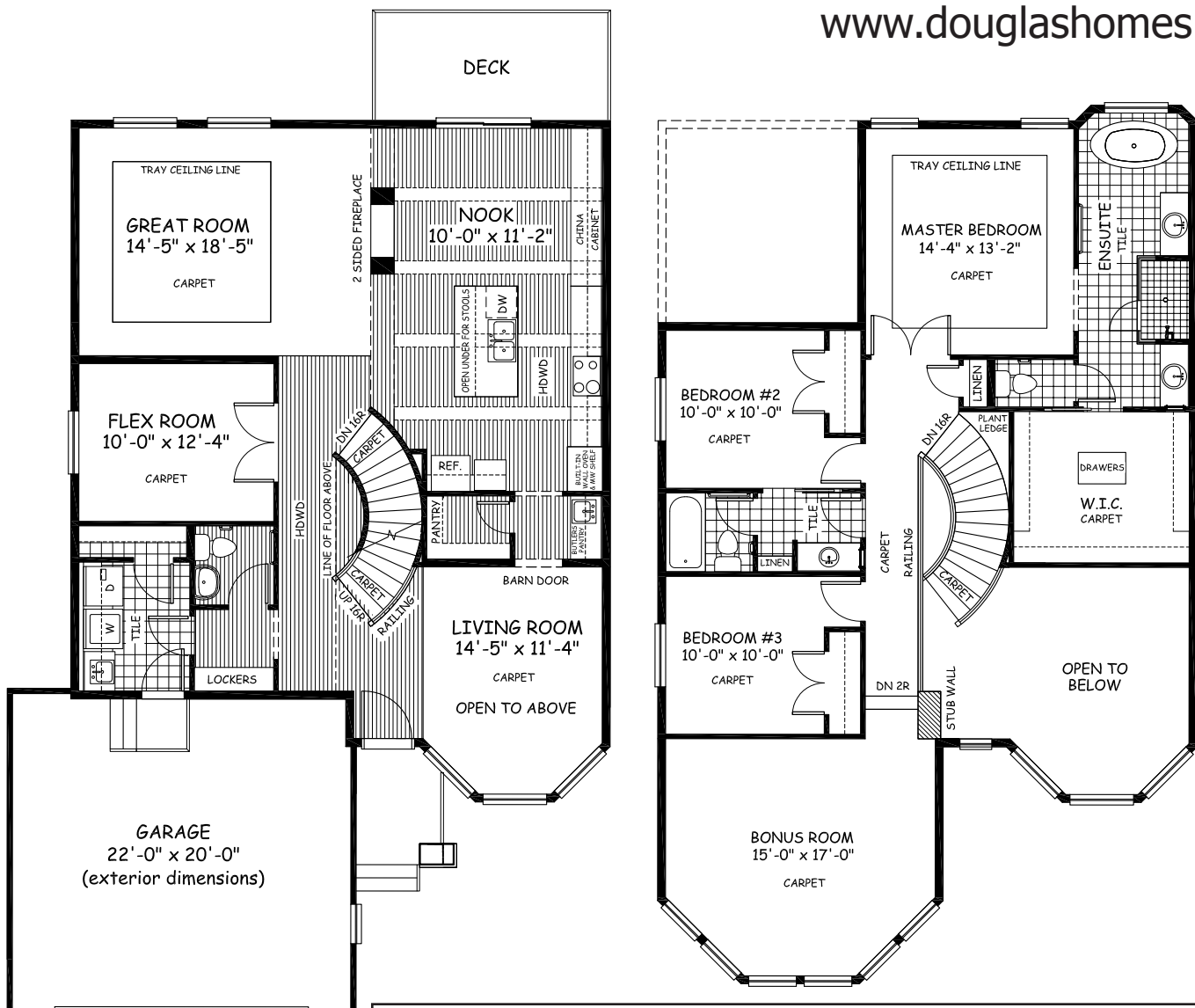
## Features

- 3 beds, 2.5 baths, bonus room, flex room
- Chef's kitchen package
- Master ensuite has double vanities, fully tiled shower and drop in tub
- Oversize double garage
- Gas fireplace
- 9' basement
- 9' main floor ceilings with large windows
- Granite countertops



incl. lot and GST

[www.douglashomes.net](http://www.douglashomes.net)



Artist's representation, may not be exactly as shown - all dimensions are approximate. Douglas Homes reserves the right to make changes/substitutions to improve this home while under construction. Pricing is subject to change without notice and is valid only on the day of issue. All designs and plans are the exclusive property of Douglas Homes Ltd.