

the **Martinique 4**

1348
sq.ft.



2 bedrooms



2 bathrooms



37' wide



NOTES:

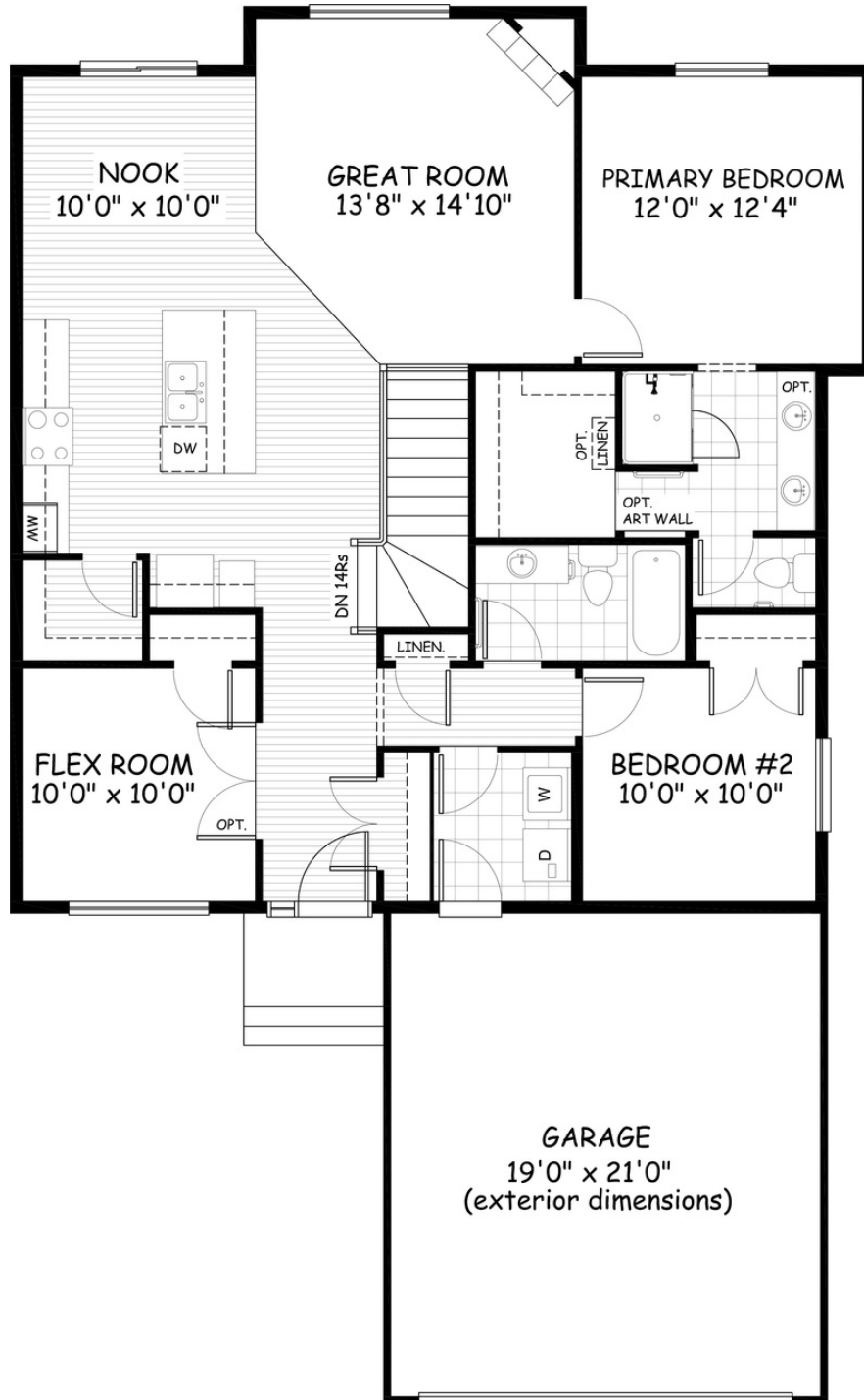


Artist's representation, may not be exactly as shown - all dimensions are approximate. All plans/designs are the exclusive property of Douglas Homes Ltd. Prices are subject to change without notice.

the **Martinique 4**

1348 sq.ft.

37' wide
59-10' long



MAIN
1348 sq.ft.

June 2021. Artists's representation, may not be exactly as shown and all dimensions are approximate.
All plans/designs are the exclusive property of Douglas Homes Ltd. Prices are subject to change without notice.

