

# *the* Mediterranean

**2593  
sq.ft.**



3 bedrooms



2.5 bathrooms



35' wide



NOTES:

---

---

---


---

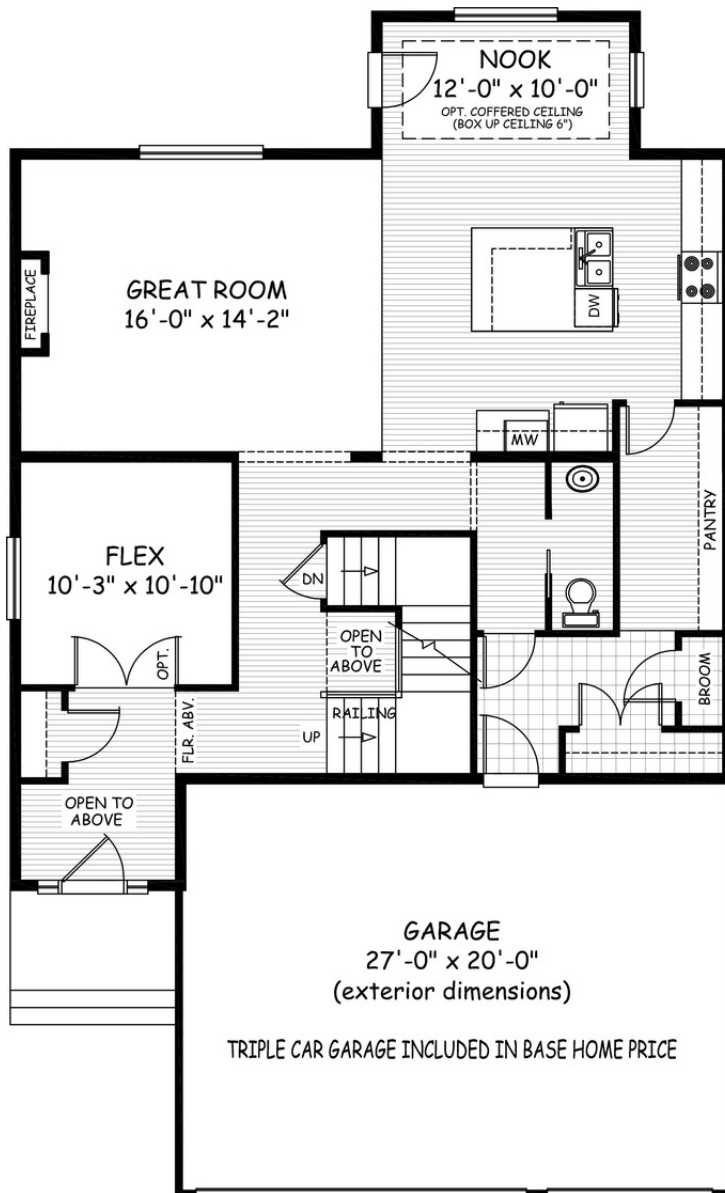


Artists's representation, may not be exactly as shown - all dimensions are approximate. All plans/designs are the exclusive property of Douglas Homes Ltd. Prices are subject to change without notice.

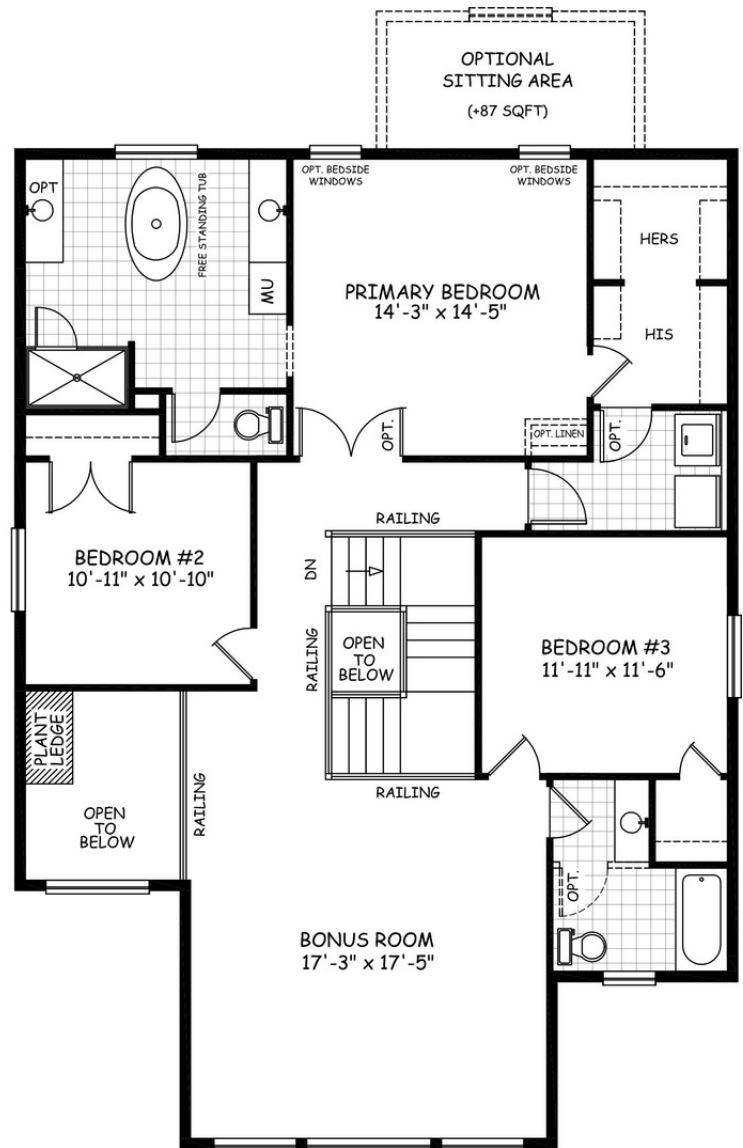
# the Mediterranean

**2593 sq.ft.**

35' wide  
57-6' long 



**MAIN**  
1207 sq.ft.



**UPPER**  
1386 sq.ft.

June 2021. Artists's representation, may not be exactly as shown and all dimensions are approximate. All plans/designs are the exclusive property of Douglas Homes Ltd. Prices are subject to change without notice.

