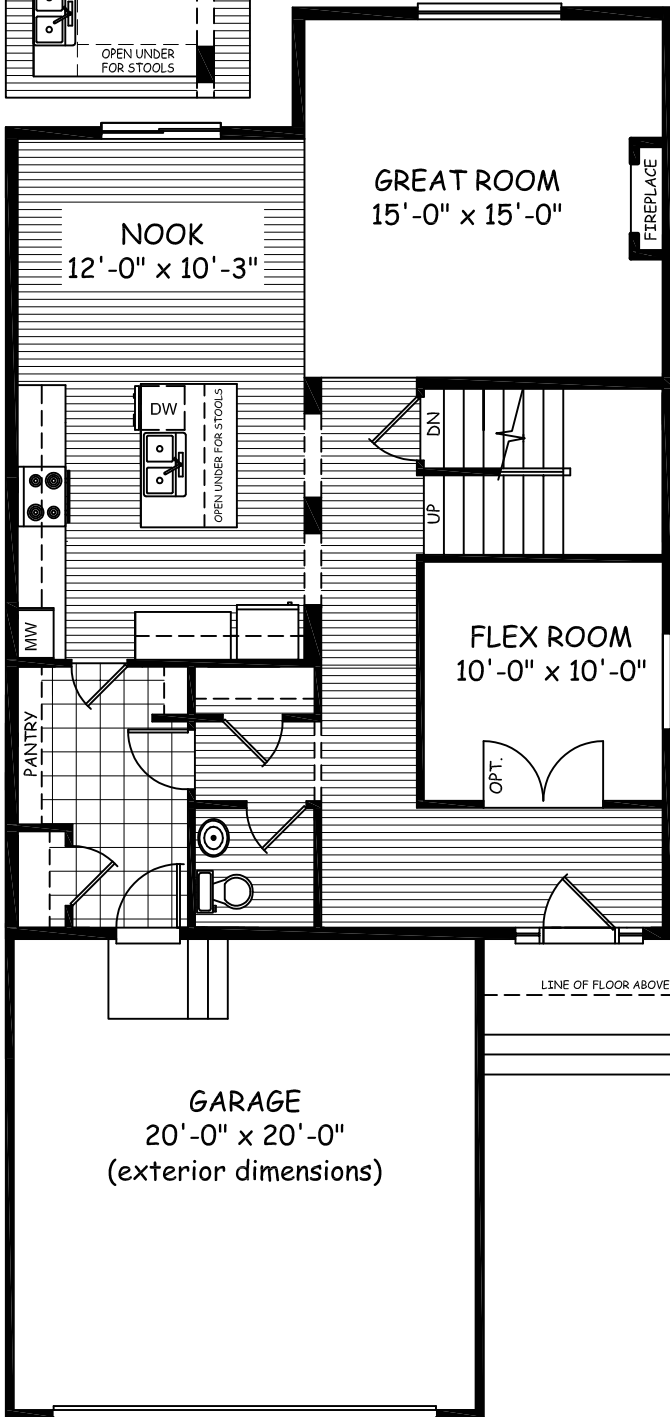
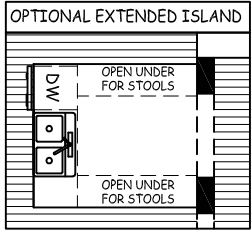




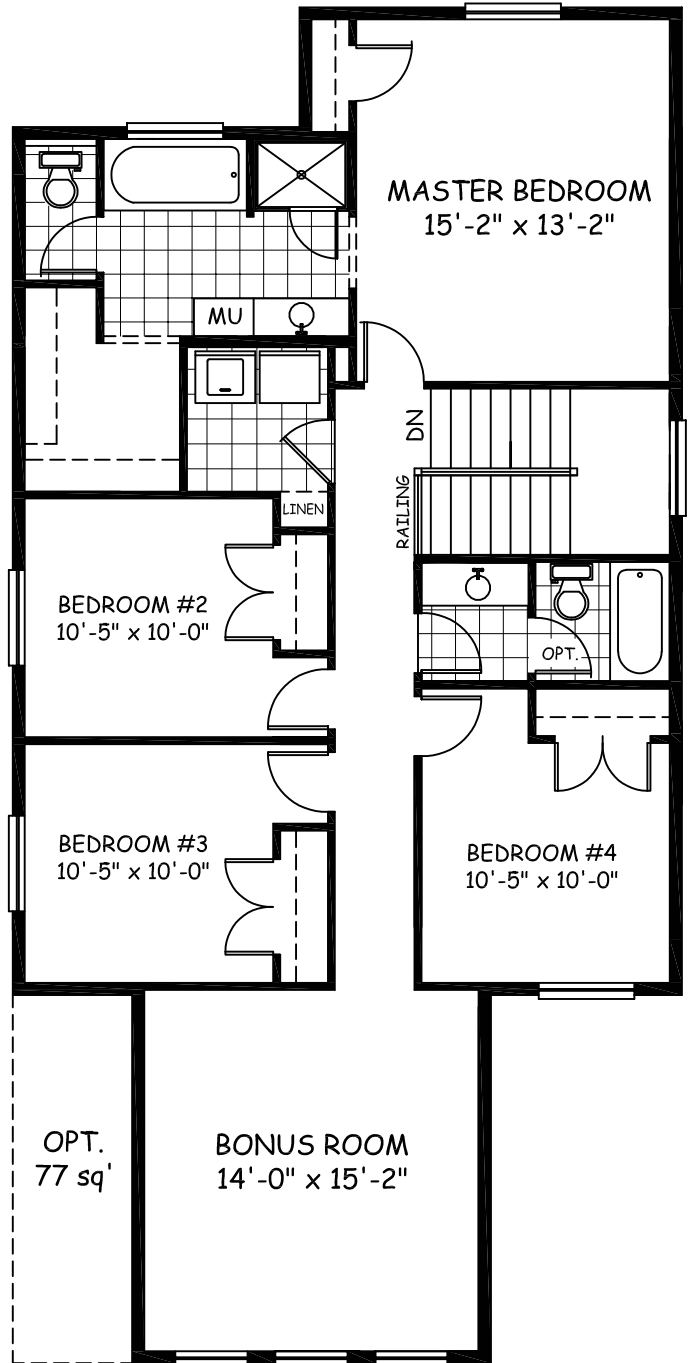
DOUGLAS HOMES  
PERFECT FIT

# Rhodes 3

2290 sqft



Main Floor 1032 sqft



Upper Floor 1258 sqft

28.07-18.58

douglashomes.net 403-717-0505

Artist's representation, may not be exactly as shown - all dimensions are approximate  
All designs and plans are the exclusive property of Douglas Homes Ltd.

