

the Montenegro 1

2249
sq.ft.



3 bedrooms



2.5 bathrooms



36' wide



NOTES:

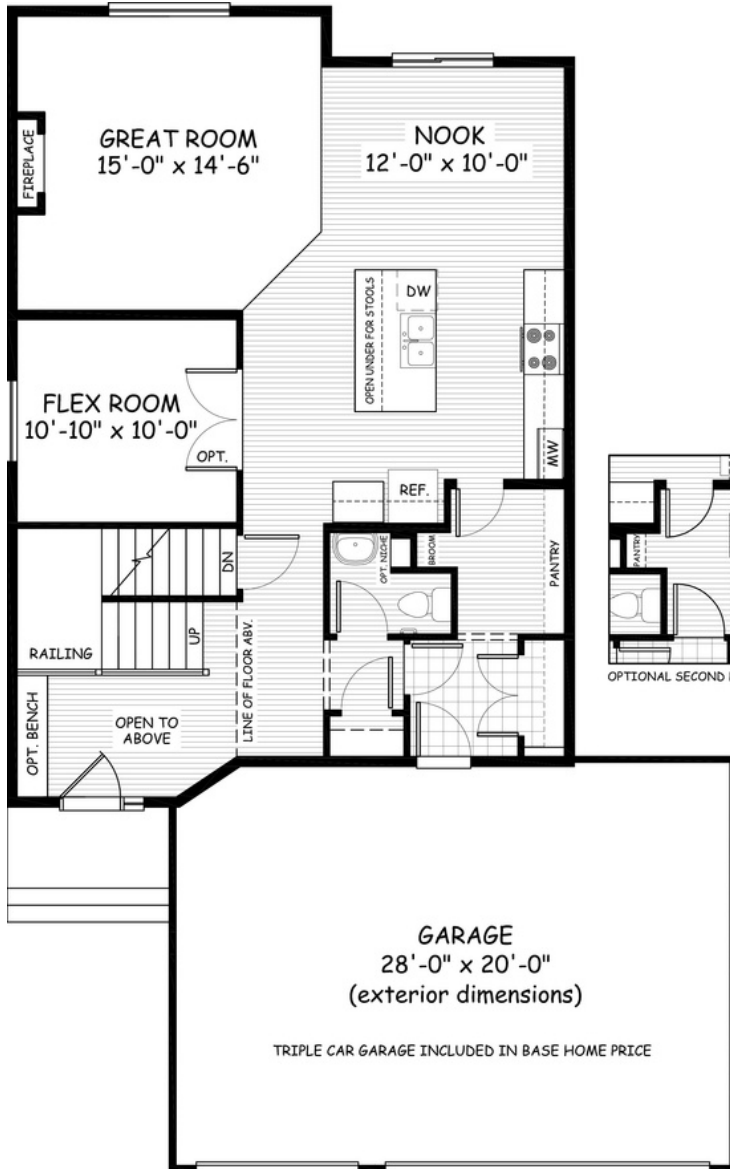


Artists's representation, may not be exactly as shown - all dimensions are approximate. All plans/designs are the exclusive property of Douglas Homes Ltd. Prices are subject to change without notice.

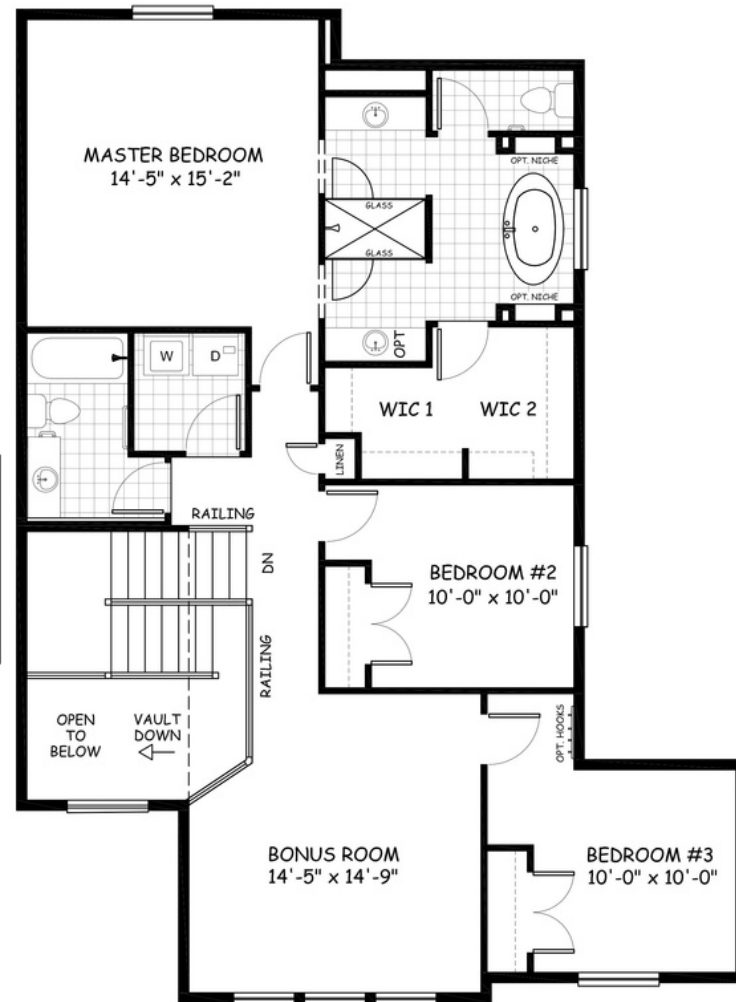
the Montenegro 1

2249 sq.ft.

36' wide
57'-6" long



MAIN
1040 sq.ft.



UPPER
1209 sq.ft.

June 2021. Artists's representation, may not be exactly as shown and all dimensions are approximate.
All plans/designs are the exclusive property of Douglas Homes Ltd. Prices are subject to change without notice.

DH
DOUGLAS HOMES
— PERFECT FIT —

www.douglashomes.net | @douglashomesltd