

the Grand Valley

**1853
sq.ft.**



3 bedrooms



2.5 bathrooms



26' wide



NOTES:



DOUGLAS HOMES

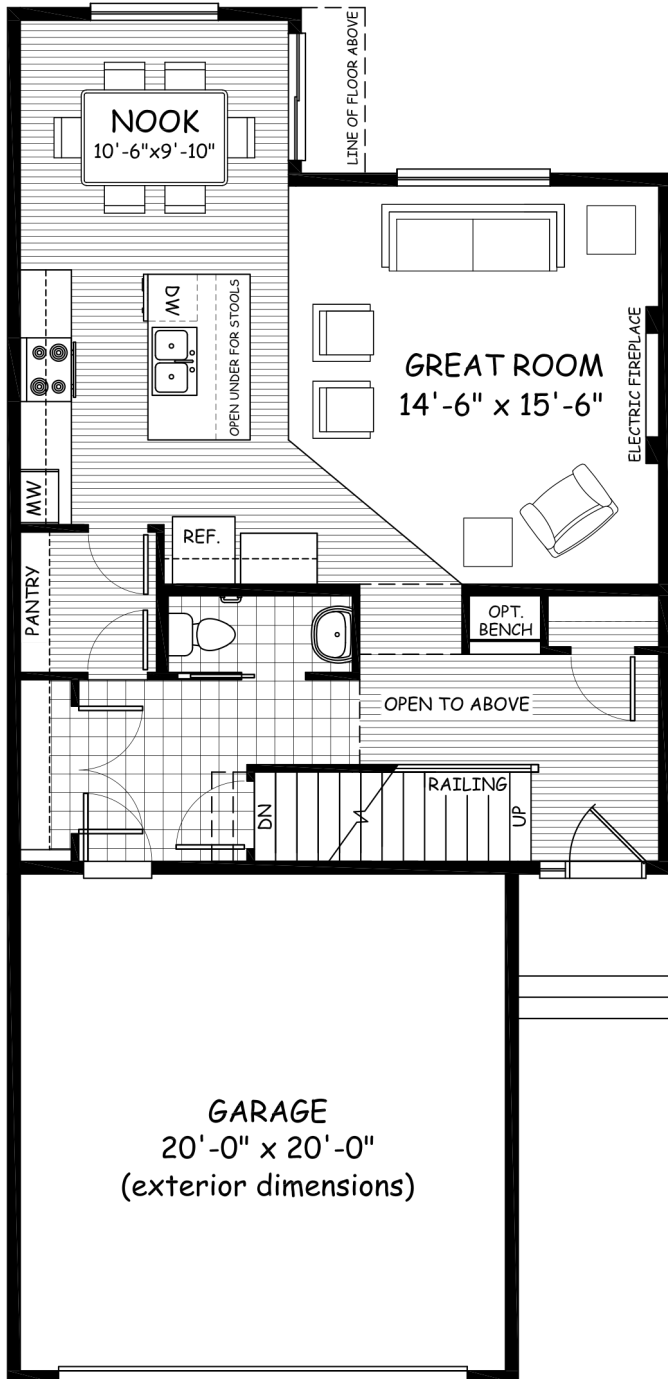
REMARKABLE WITHIN REACH

Artists's representation, may not be exactly as shown - all dimensions are approximate. All plans/designs are the exclusive property of Douglas Homes Ltd. Prices are subject to change without notice.

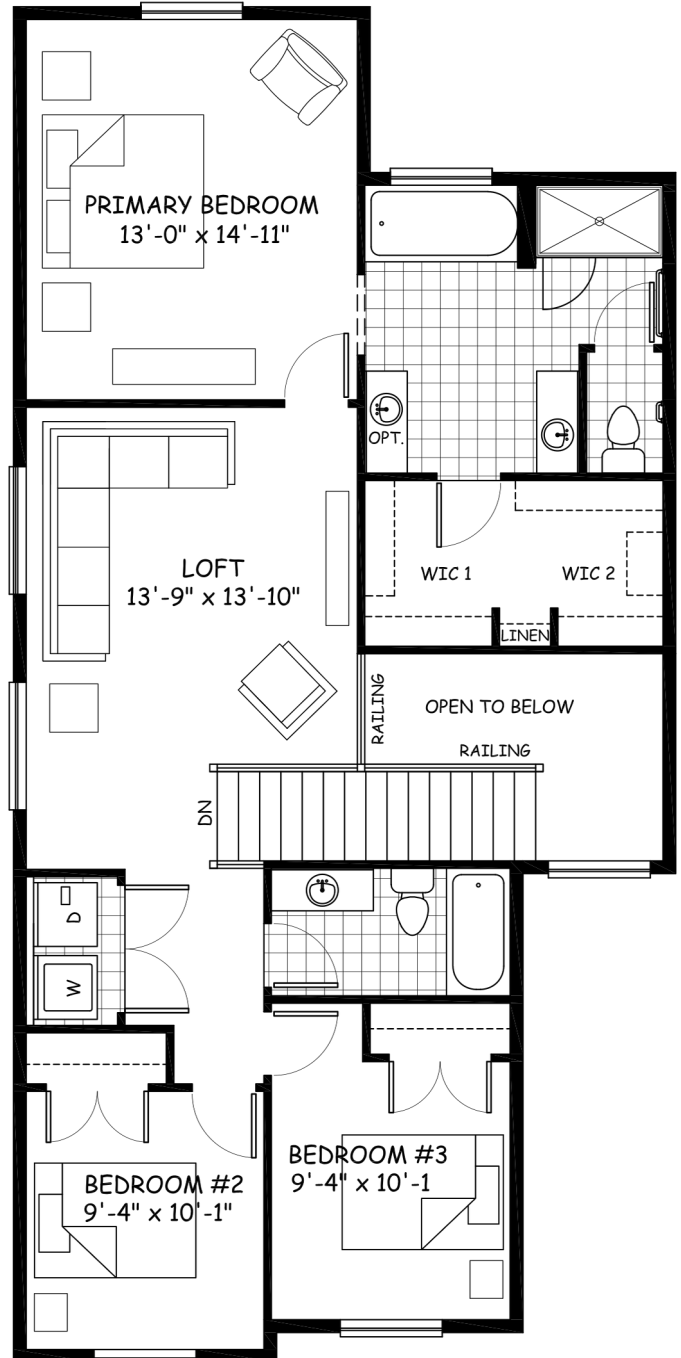
the Grand Valley

1853 sq.ft.

24' wide
54' long



MAIN
790 sq.ft.



UPPER
1063 sq.ft.



DOUGLAS HOMES
REMARKABLE WITHIN REACH

February 2023. Artists's representation, may not be exactly as shown and all dimensions are approximate.
All plans/designs are the exclusive property of Douglas Homes Ltd. Prices are subject to change without notice.