

the Grand Valley

**1853
sq.ft.**



3 bedrooms



2.5 bathrooms



26' wide



NOTES:

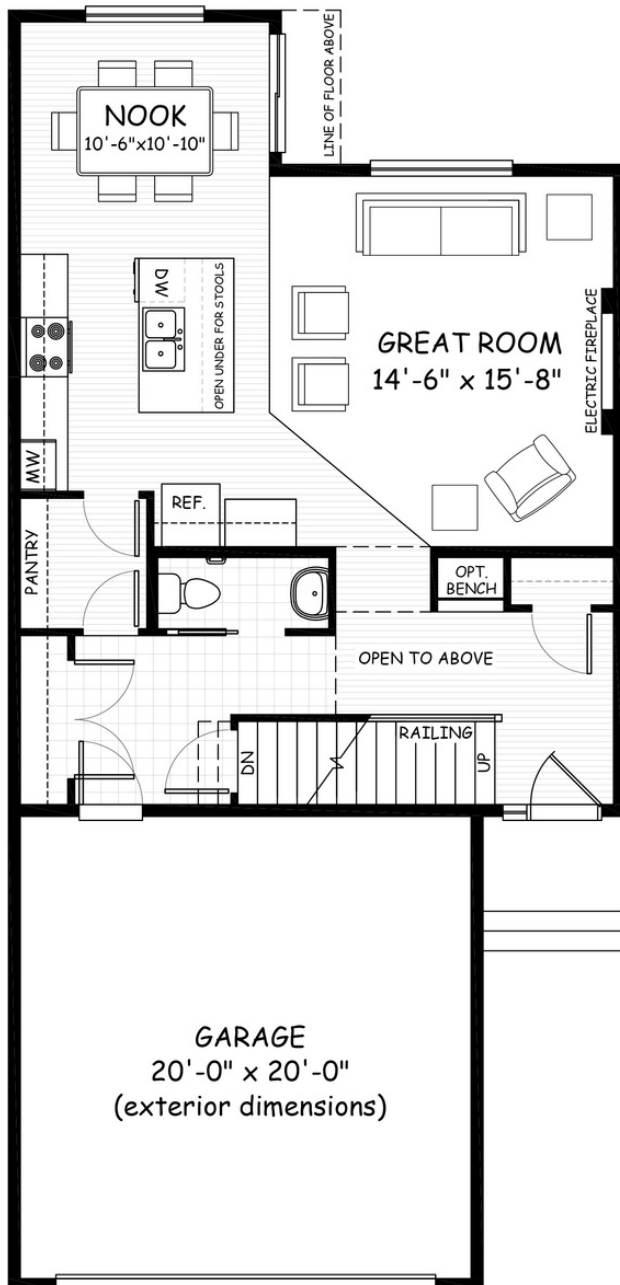


Artists's representation, may not be exactly as shown - all dimensions are approximate. All plans/designs are the exclusive property of Douglas Homes Ltd. Prices are subject to change without notice.

the Grand Valley

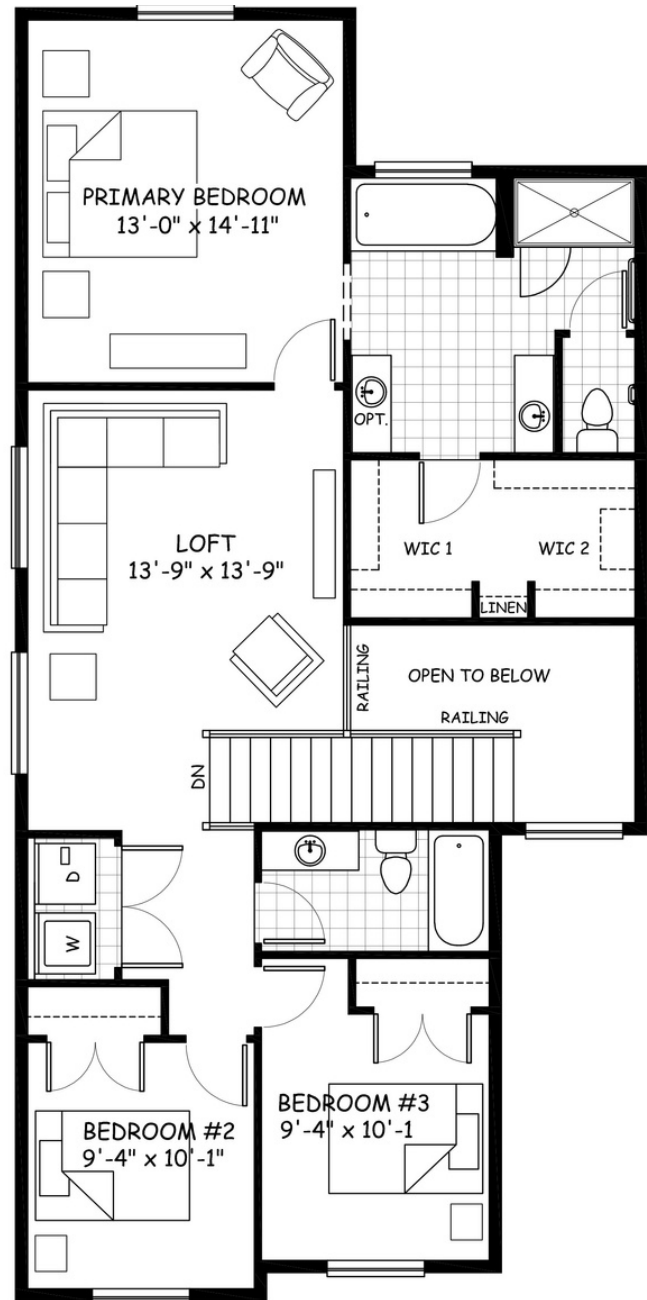
1853 sq.ft.

26' wide
54' long



MAIN

790 sq.ft.



UPPER

1063 sq.ft.

Feb. 2023. Artist's representation, may not be exactly as shown and all dimensions are approximate.
All plans/designs are the exclusive property of Douglas Homes Ltd. Prices are subject to change without notice.

DH
DOUGLAS HOMES
— PERFECT FIT —

www.douglashomes.net | @douglashomesltd