

# *the* Invermere 1

**2016  
sq.ft.**



3 bedrooms



2.5 bathrooms



28' wide



NOTES:

---

---

---


---

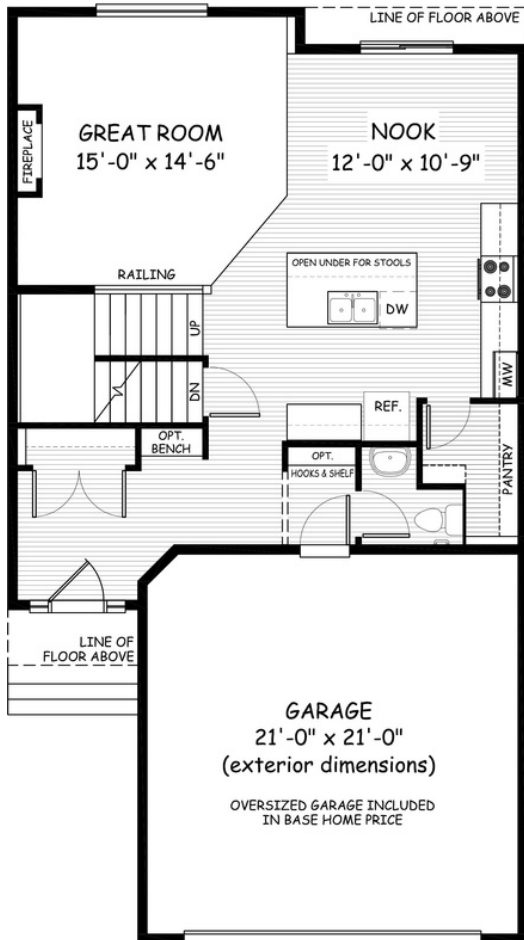


Artists's representation, may not be exactly as shown - all dimensions are approximate. All plans/designs are the exclusive property of Douglas Homes Ltd. Prices are subject to change without notice.

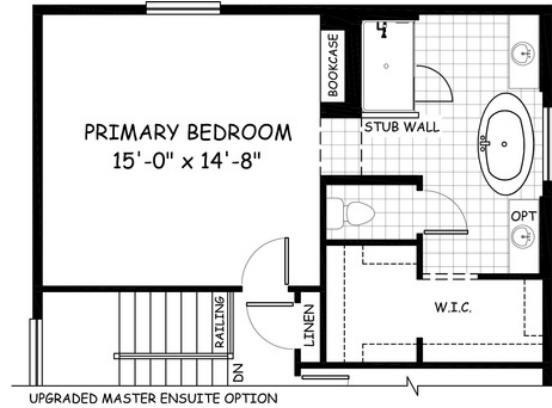
# the Invermere 1

**2016 sq.ft.**

28' wide  
50'-6" long ←  →



**MAIN**  
826 sq.ft.



**UPPER**  
1190 sq.ft.

April 2021. Artists's representation, may not be exactly as shown and all dimensions are approximate.  
All plans/designs are the exclusive property of Douglas Homes Ltd. Prices are subject to change without notice.

**DH**  
DOUGLAS HOMES  
— PERFECT FIT —