

the Georgetown

**2060
sq.ft.**



3 bedrooms



2.5 bathrooms



27'-6" wide



NOTES:

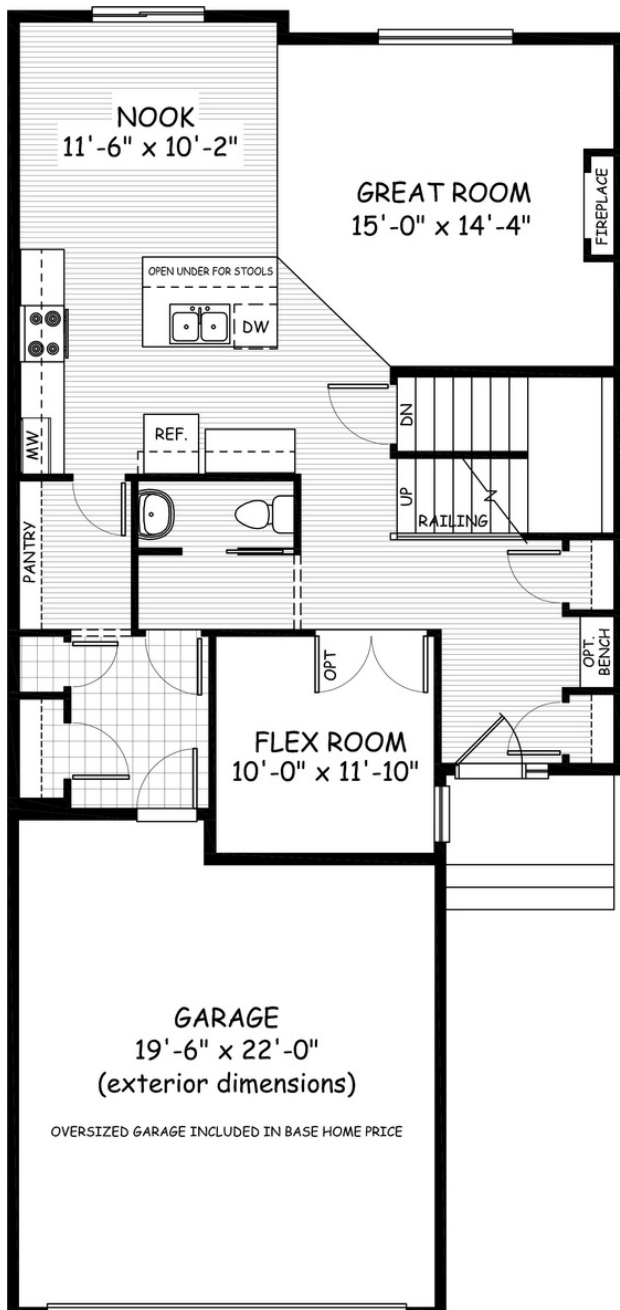


Artists's representation, may not be exactly as shown - all dimensions are approximate. All plans/designs are the exclusive property of Douglas Homes Ltd. Prices are subject to change without notice.

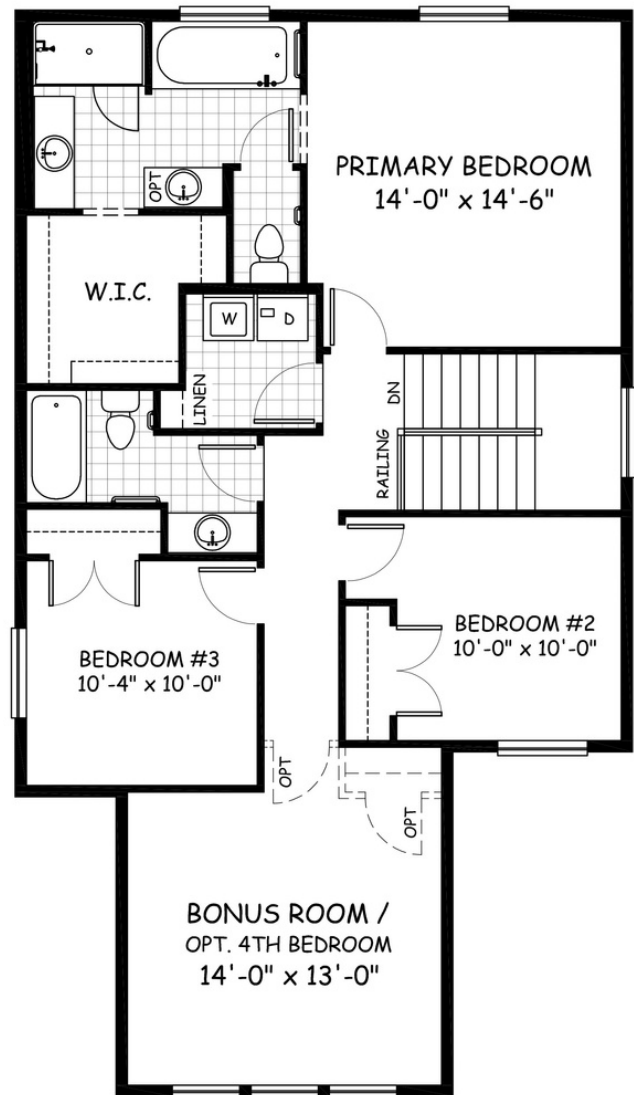
the Georgetown

2060 sq.ft.

27'-6" wide
58' long



MAIN
980 sq.ft.



UPPER
1080 sq.ft.

April 2021. Artists's representation, may not be exactly as shown and all dimensions are approximate. All plans/designs are the exclusive property of Douglas Homes Ltd. Prices are subject to change without notice.

