

Georgetown - 2060 sq.ft.

264 Aspenmere Way in Chestermere, AB

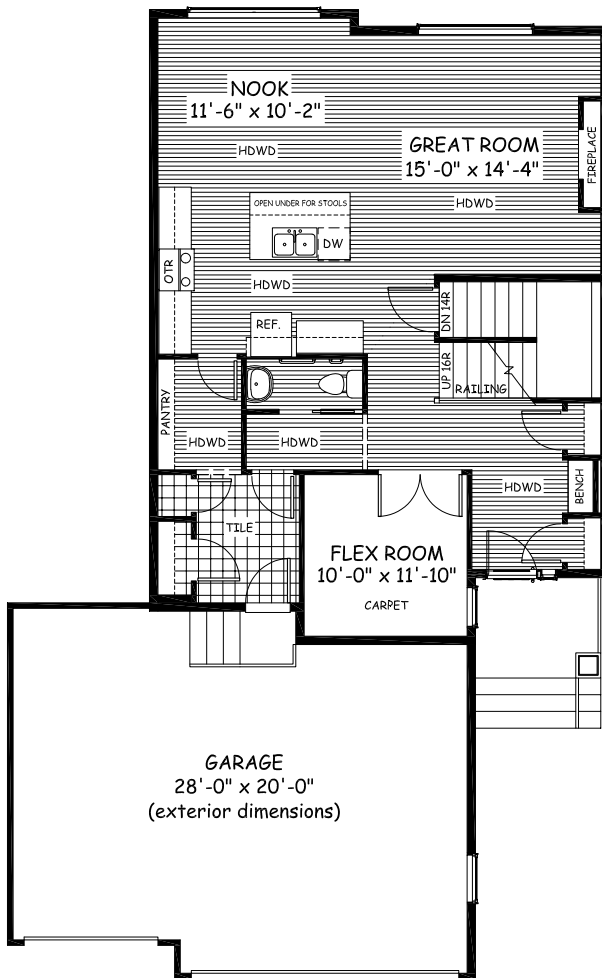


DOUGLAS HOMES
— PERFECT FIT —

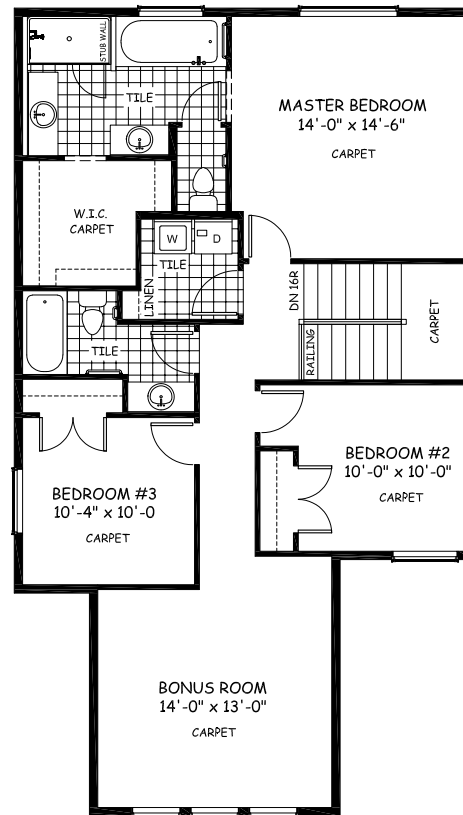
Features

- 3 beds, 2.5 baths, bonus room, flex room
- Chef's kitchen package
- Master ensuite has double vanities, tiled shower, and tub
- Hardwood throughout main floor
- Boxed out gas fireplace
- Upper floor laundry
- 9' main floor ceilings with large windows
- Quartz countertops

Triple car garage



Main Floor - 980 sq. ft.



Upper Floor - 1080 sq. ft.

