

Montenegro 2- 2145 sq.ft.

112 Sundown View in Cochrane, AB



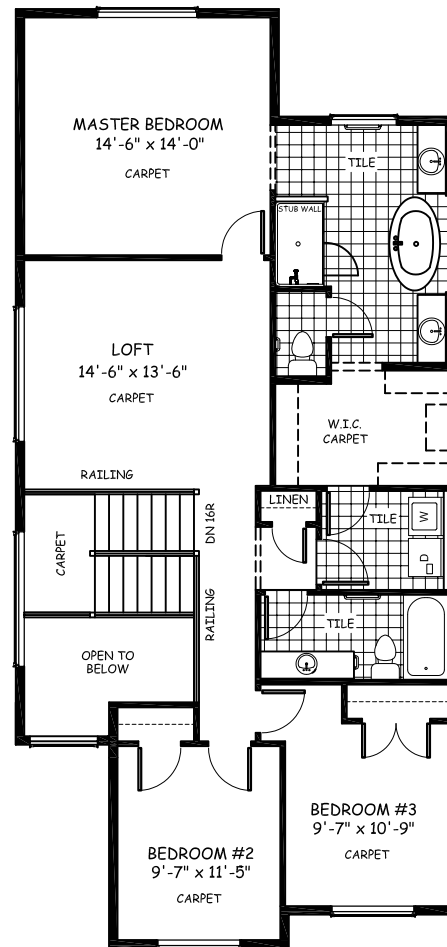
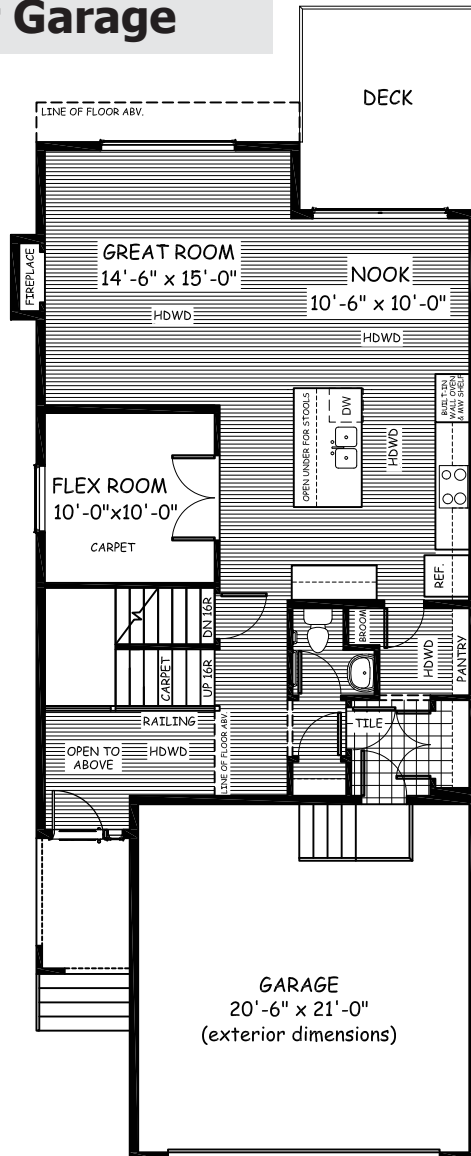
DOUGLAS HOMES

— PERFECT FIT —

Features

- 3 Beds, 2.5 Baths, Flex Room, Loft
- Master Ensuite has Double Sinks, Tiled Shower, and a Large Walk-in Closet
- Boxed out Gas Fireplace
- Upper Floor Laundry
- 9' Main Floor Ceilings
- Quartz Countertops
- Hardwood Floors

Walk-Out Basement & Double Car Garage



www.douglashomes.net



Douglas Homes Ltd



@douglashomesltd



@DouglasHomesLtd

Artist's representation, may not be exactly as shown - all dimensions are approximate. Douglas Homes reserves the right to make changes/substitutions to improve this home while under construction. Pricing is subject to change without notice and is valid only on the day of issue. All designs and plans are the exclusive property of Douglas Homes Ltd.