

# *the* Montenegro 2

**2138  
sq.ft.**



3 bedrooms



2.5 bathrooms



26' wide



NOTES:

---

---

---

---



Artists's representation, may not be exactly as shown - all dimensions are approximate. All plans/designs are the exclusive property of Douglas Homes Ltd. Prices are subject to change without notice.

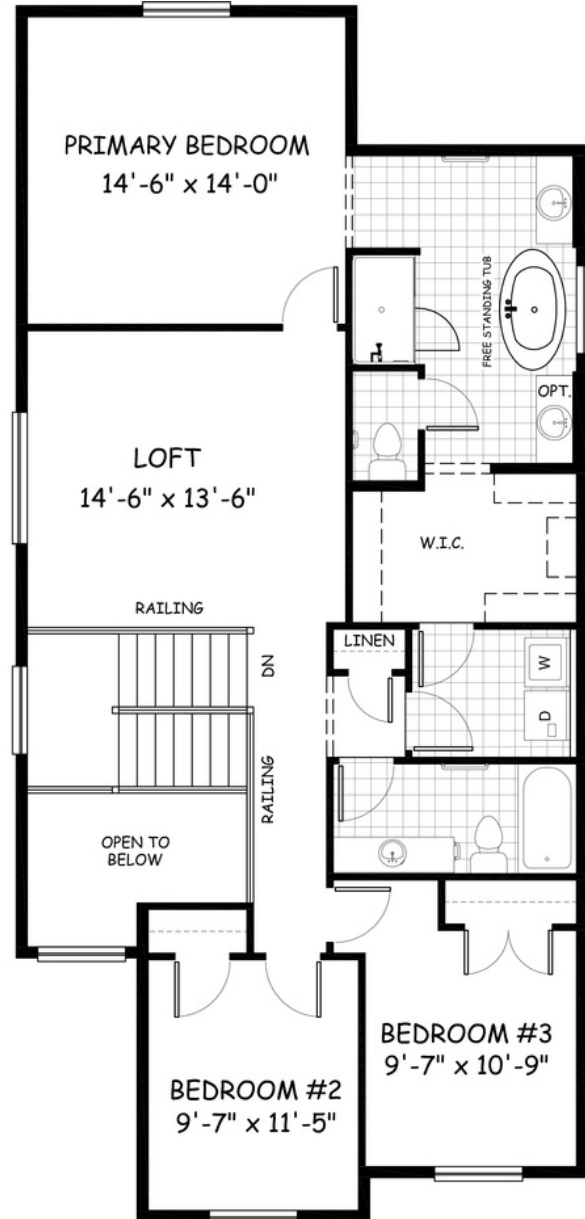
# the Montenegro 2

2138 sq.ft.

26' wide  
62'-4" long



**MAIN**  
985 sq.ft.



**UPPER**  
1153 sq.ft.

April 2021. Artists's representation, may not be exactly as shown and all dimensions are approximate.  
All plans/designs are the exclusive property of Douglas Homes Ltd. Prices are subject to change without notice.

**DH**  
DOUGLAS HOMES  
— PERFECT FIT —

www.douglashomes.net | @douglashomesltd