

the Monte Carlo 6

**2145
sq.ft.**



3 bedrooms



2.5 bathrooms



26' wide



NOTES:

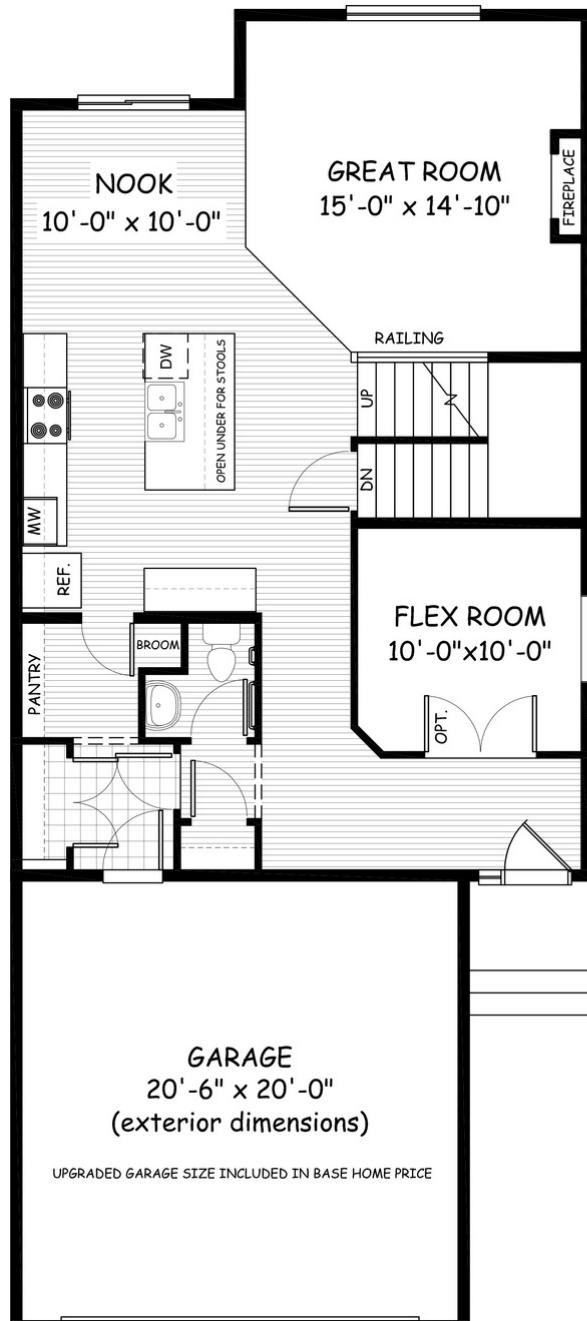


Artists's representation, may not be exactly as shown - all dimensions are approximate. All plans/designs are the exclusive property of Douglas Homes Ltd. Prices are subject to change without notice.

the Monte Carlo 6

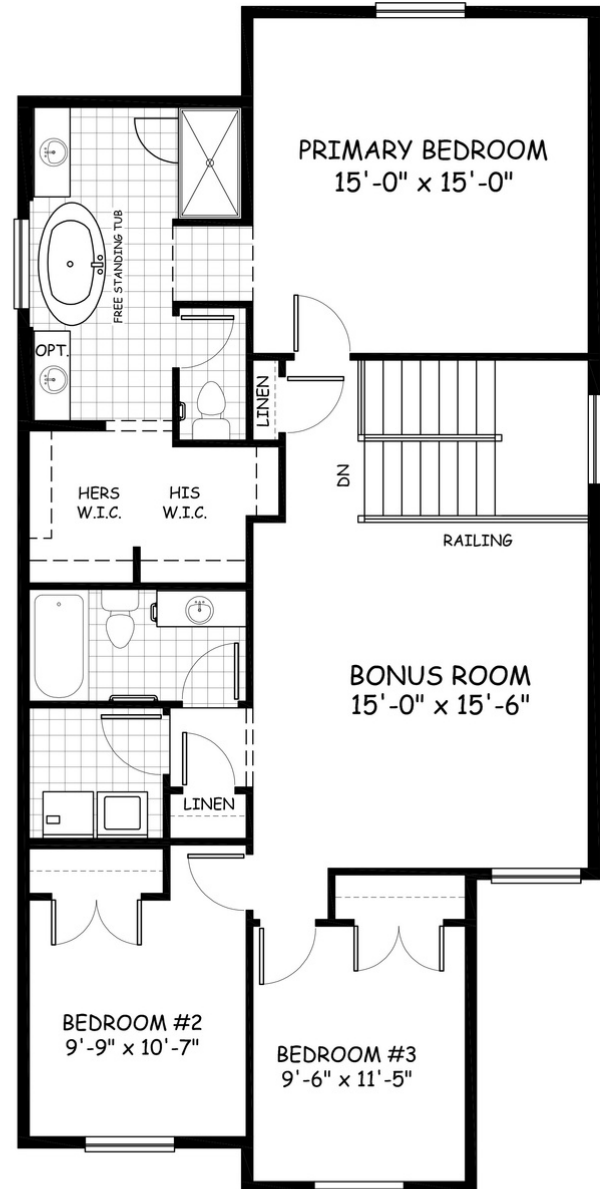
2145 sq.ft.

26' wide
59' long



MAIN

974 sq.ft.



UPPER

1171 sq.ft.

April 2021. Artists's representation, may not be exactly as shown and all dimensions are approximate.
All plans/designs are the exclusive property of Douglas Homes Ltd. Prices are subject to change without notice.

DH
DOUGLAS HOMES
— PERFECT FIT —

www.douglashomes.net | @douglashomesltd