

# *the* Ashton

**1792  
sq.ft.**



3 bedrooms



2.5 bathrooms



23' wide



NOTES:

---

---

---

---

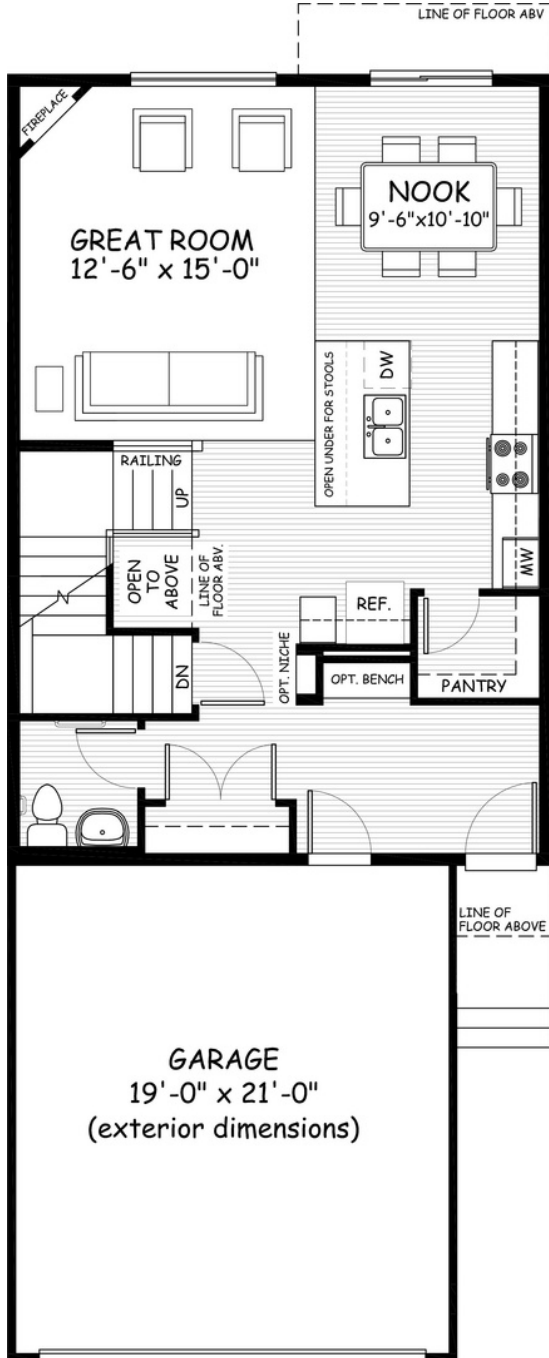


Artists's representation, may not be exactly as shown - all dimensions are approximate. All plans/designs are the exclusive property of Douglas Homes Ltd. Prices are subject to change without notice.

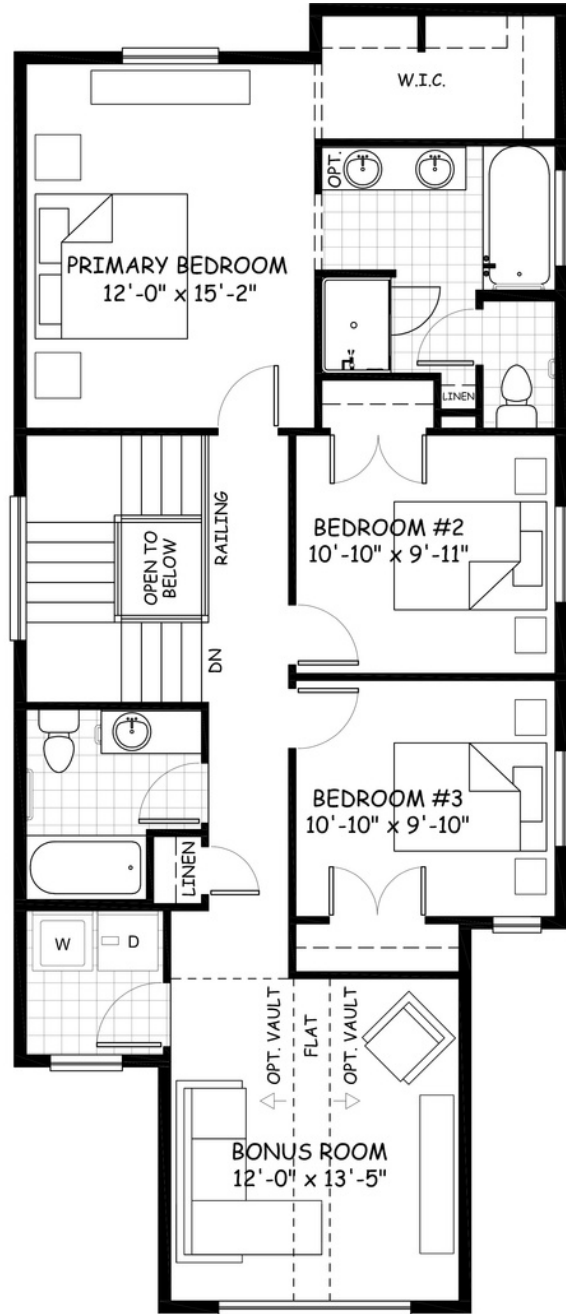
# the Ashton

1792 sq.ft.

23' wide  
56'-6" long



**MAIN**  
770 sq.ft.



**UPPER**  
1022 sq.ft.

March 2022. Artists's representation, may not be exactly as shown and all dimensions are approximate. All plans/designs are the exclusive property of Douglas Homes Ltd. Prices are subject to change without notice.

