

Georgetown - 2060 sq.ft.

216 Aspenmere Way in Chestermere, AB

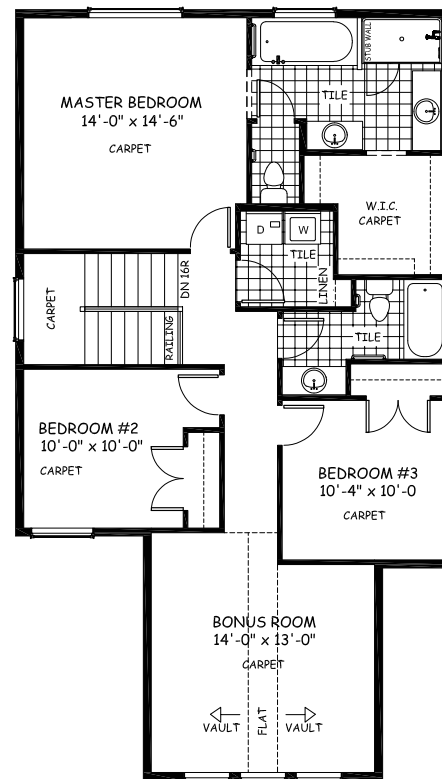
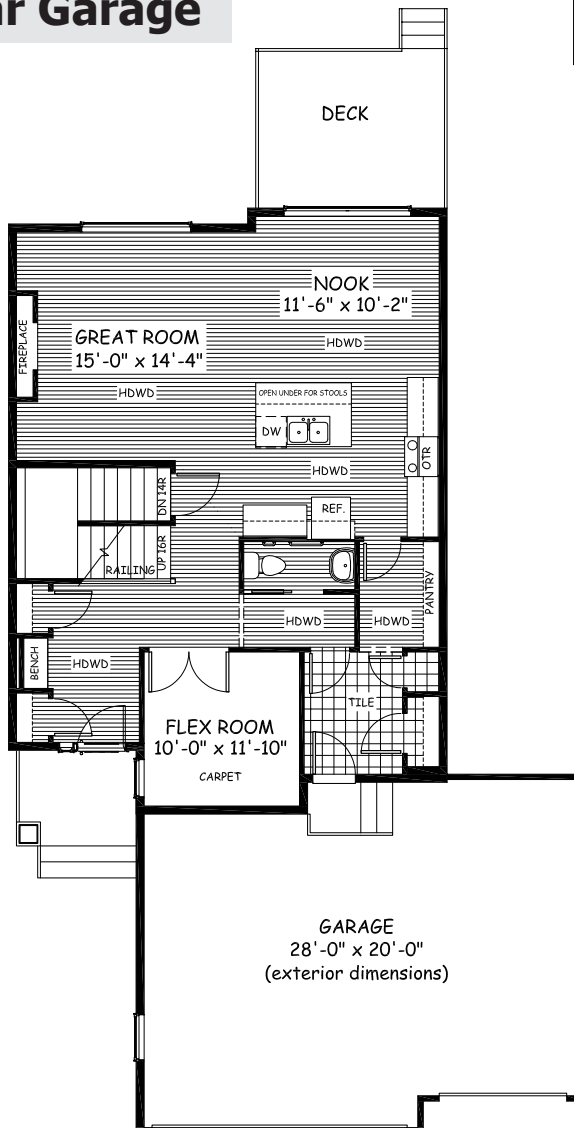


DOUGLAS HOMES
— PERFECT FIT —

Features

3 Beds, 2.5 Baths, Flex Room,
and Bonus Room with Vaulted Ceilings
Master Ensuite has Double Sinks, Tiled Shower,
and a Large Walk-in Closet
Gas Fireplace
Upper Floor Laundry
9' Main Floor Ceiling
Quartz Countertops
Hardwood Throughout Main Floors

Triple Car Garage



www.douglashomes.net



Douglas Homes Ltd



@douglashomesltd



@DouglasHomesLtd

Artist's representation, may not be exactly as shown - all dimensions are approximate. Douglas Homes reserves the right to make changes/substitutions to improve this home while under construction. Pricing is subject to change without notice and is valid only on the day of issue. All designs and plans are the exclusive property of Douglas Homes Ltd.