

Monte Carlo 6 - 2153 sq.ft.

120 Sundown View, Cochrane, AB

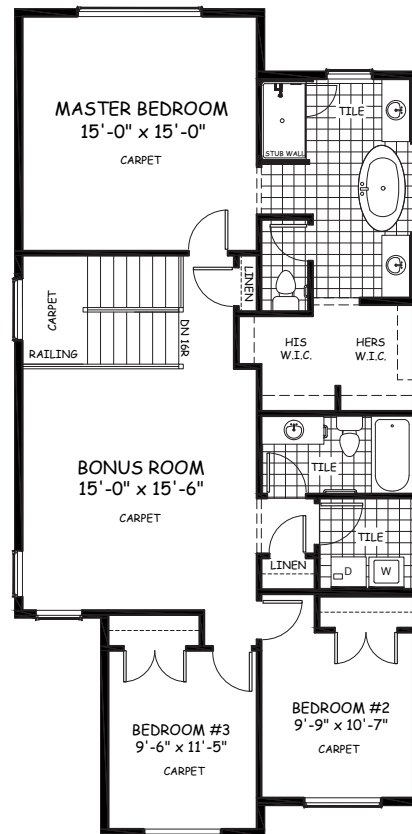
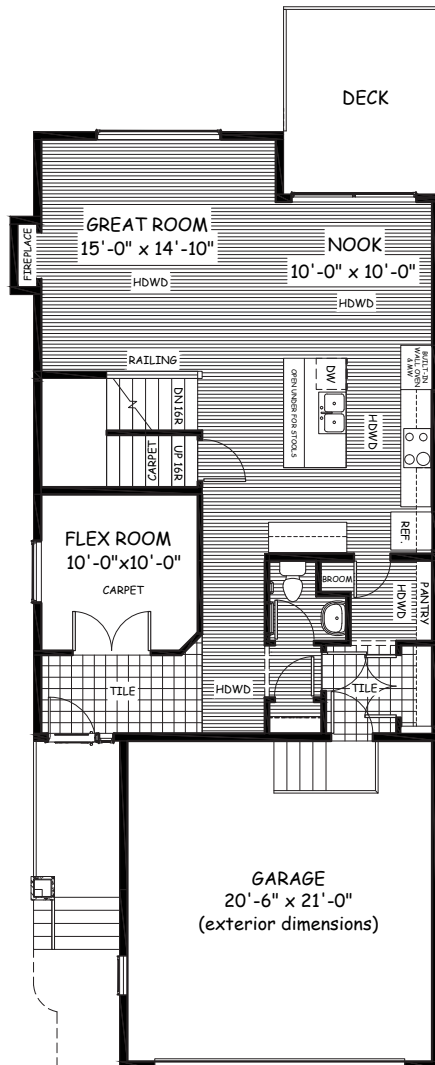


DOUGLAS HOMES
— PERFECT FIT —

Features

- 3 Beds, 2.5 Baths, Bonus Room, Flex Room
- Chef's Kitchen Package
- Quartz Countertops
- Boxed-out Gas Fireplace
- 9' Main Floor Ceiling with Large Windows
- Master Ensuite has Double Vanities, Free Standing Tub, Tiled Shower, and a Large Walk-in Closet
- Hardwood on Main with Carpet in the Flex Room
- Upper Floor Laundry

Oversized Double Car Garage



www.douglashomes.net



Douglas Homes Ltd



@douglashomesltd



@DouglasHomesLtd

Artist's representation, may not be exactly as shown - all dimensions are approximate. Douglas Homes reserves the right to make changes/substitutions to improve this home while under construction. Pricing is subject to change without notice and is valid only on the day of issue. All designs and plans are the exclusive property of Douglas Homes Ltd.