

# Georgetown - 2060 sq.ft.

204 Aspenmere Way in Chestermere, AB



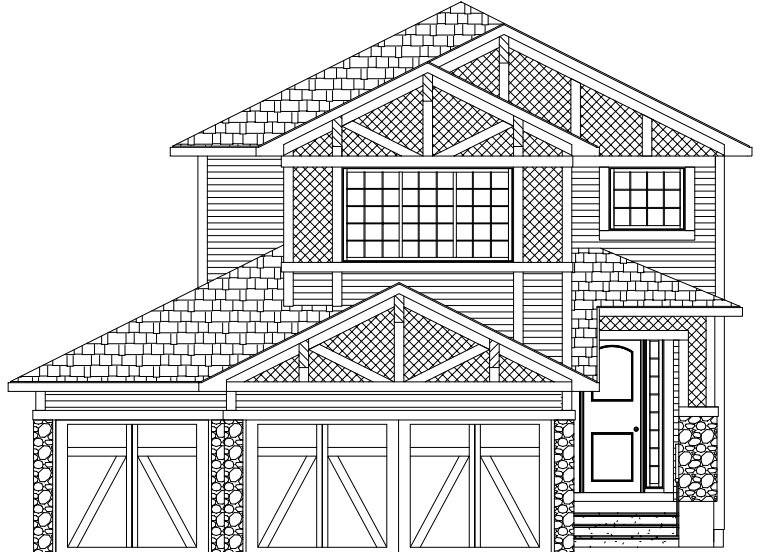
DOUGLAS HOMES

PERFECT FIT

## Features

- 3 Beds, 2.5 Baths, Flex Room, Vaulted Bonus Room
- Master Ensuite has Double Vanities, Tiled Shower
- Boxed-in Gas Fireplace
- Built in Bench in Foyer
- Upper Floor Laundry
- 9' Main Floor Ceiling
- Quartz Countertops
- Hardwood Floors on Main and Carpet in Flex Room

## Triple Car Garage



[www.douglashomes.net](http://www.douglashomes.net)



Douglas Homes Ltd



@douglashomesltd



@DouglasHomesLtd