

the Perth

1225
sq.ft.



3 bedrooms



2.5 bathrooms



20' wide



NOTES:

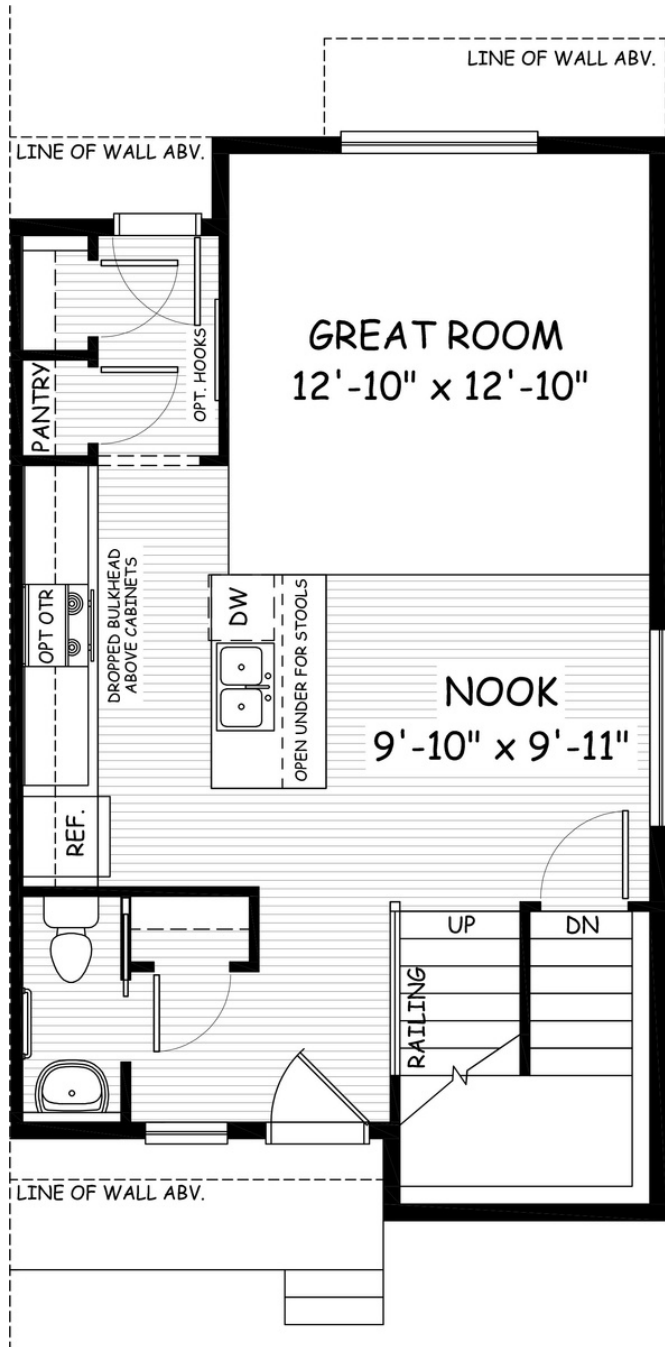


Artists's representation, may not be exactly as shown - all dimensions are approximate. All plans/designs are the exclusive property of Douglas Homes Ltd. Prices are subject to change without notice.

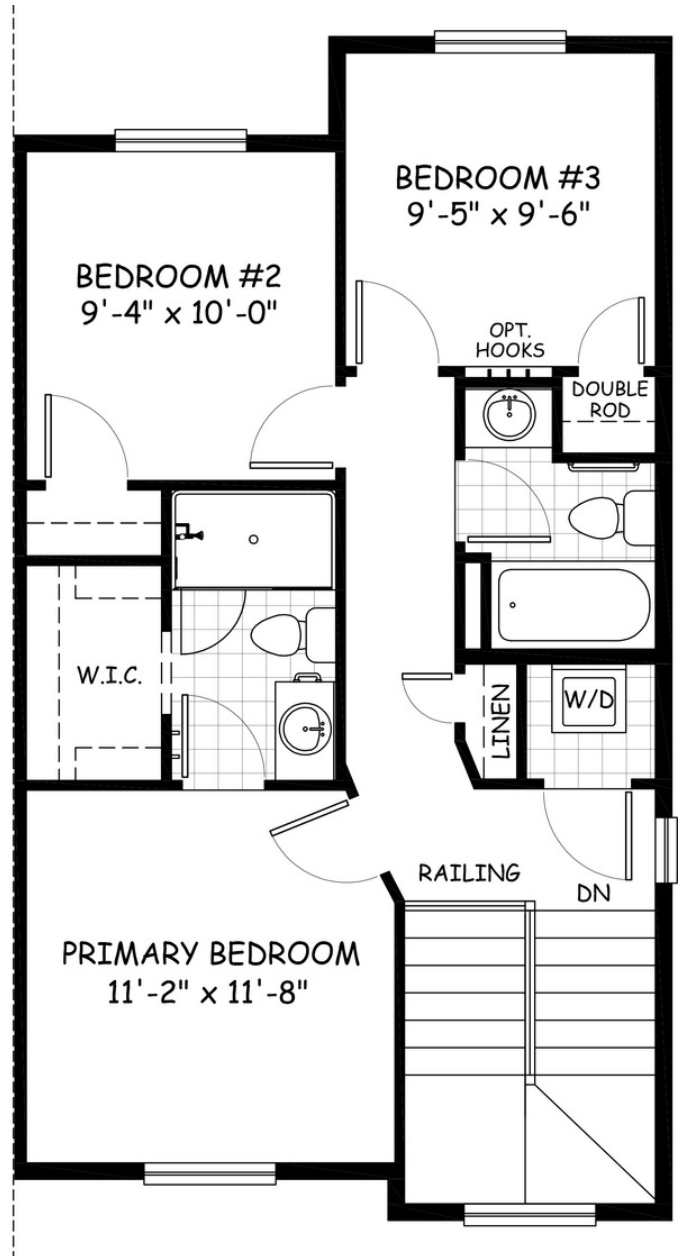
the Perth

1225 sq.ft.

20' wide
34'-6" long



MAIN
615 sq.ft.



UPPER
610 sq.ft.

April 2021. Artists's representation, may not be exactly as shown and all dimensions are approximate. All plans/designs are the exclusive property of Douglas Homes Ltd. Prices are subject to change without notice.

