

# the **Melbourne**

**1288**  
**sq.ft.**



3 bedrooms



2.5 bathrooms



20' wide



NOTES:

---

---

---

---

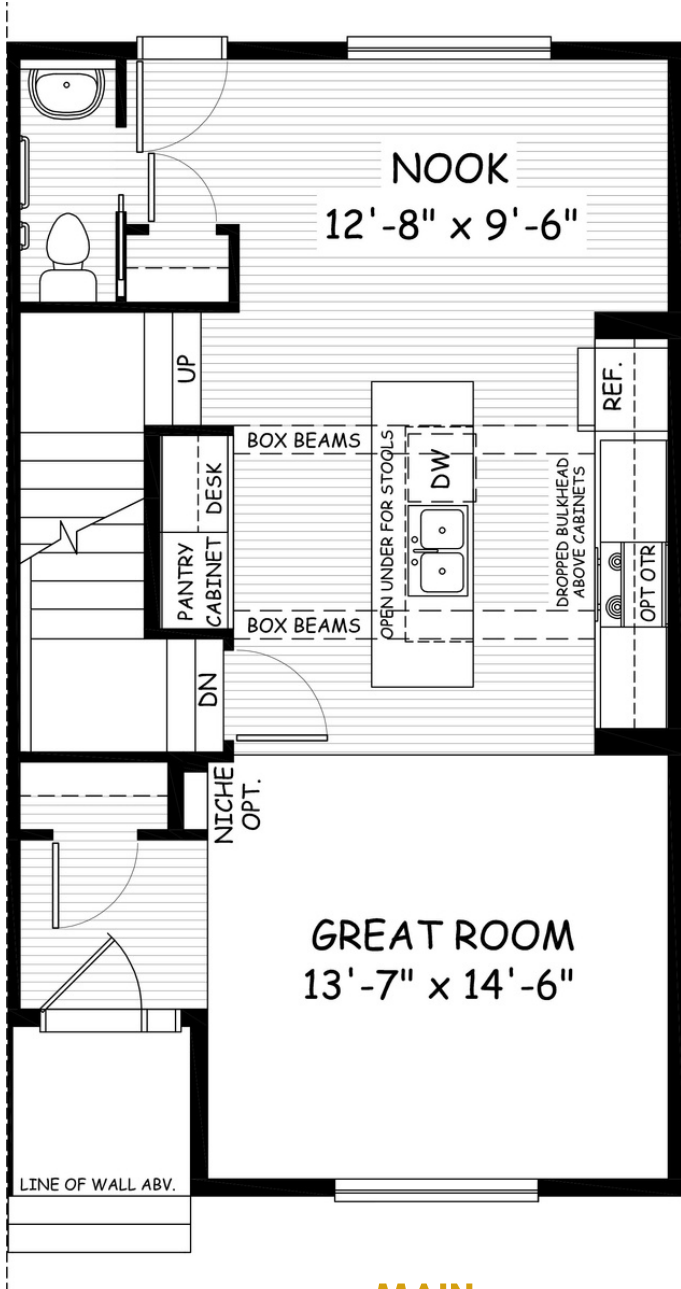


Artists's representation, may not be exactly as shown - all dimensions are approximate. All plans/designs are the exclusive property of Douglas Homes Ltd. Prices are subject to change without notice.

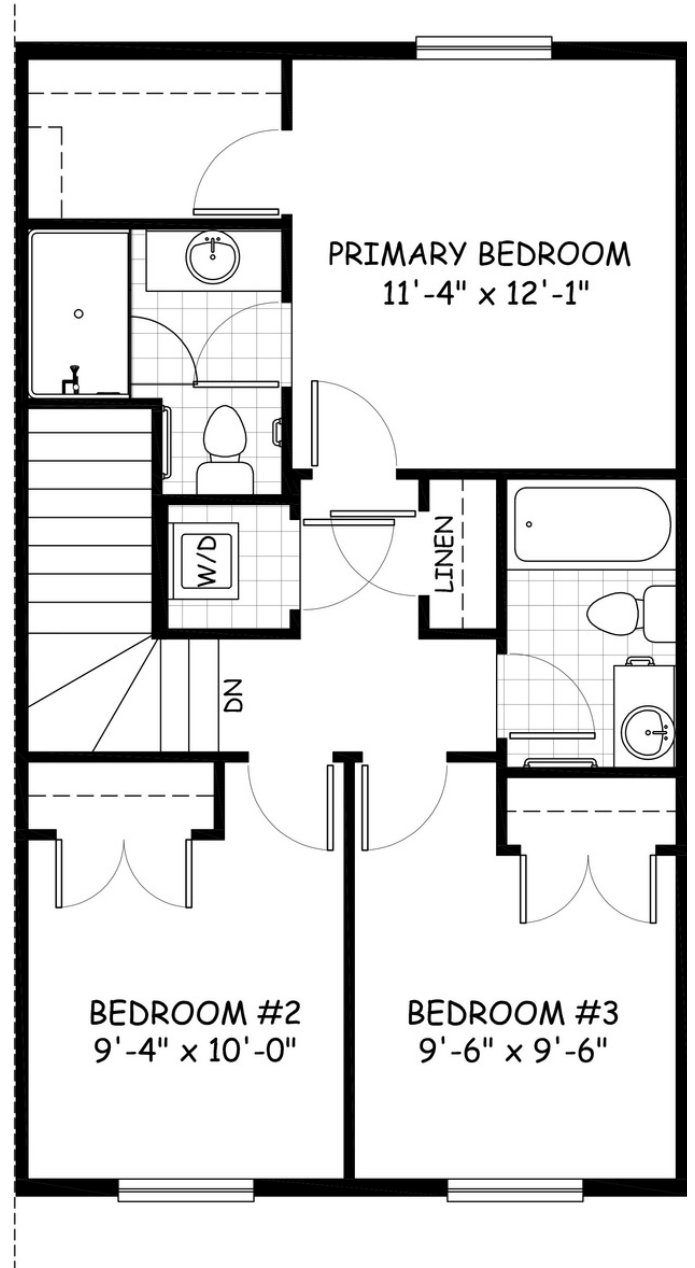
# the Melbourne

1288 sq.ft.

20' wide  
34' long



**MAIN**  
653 sq.ft.



**UPPER**  
635 sq.ft.

April 2021. Artists's representation, may not be exactly as shown and all dimensions are approximate. All plans/designs are the exclusive property of Douglas Homes Ltd. Prices are subject to change without notice.

