

the **Melbourne**

1288
sq.ft.



3 bedrooms



2.5 bathrooms



20' wide



NOTES:

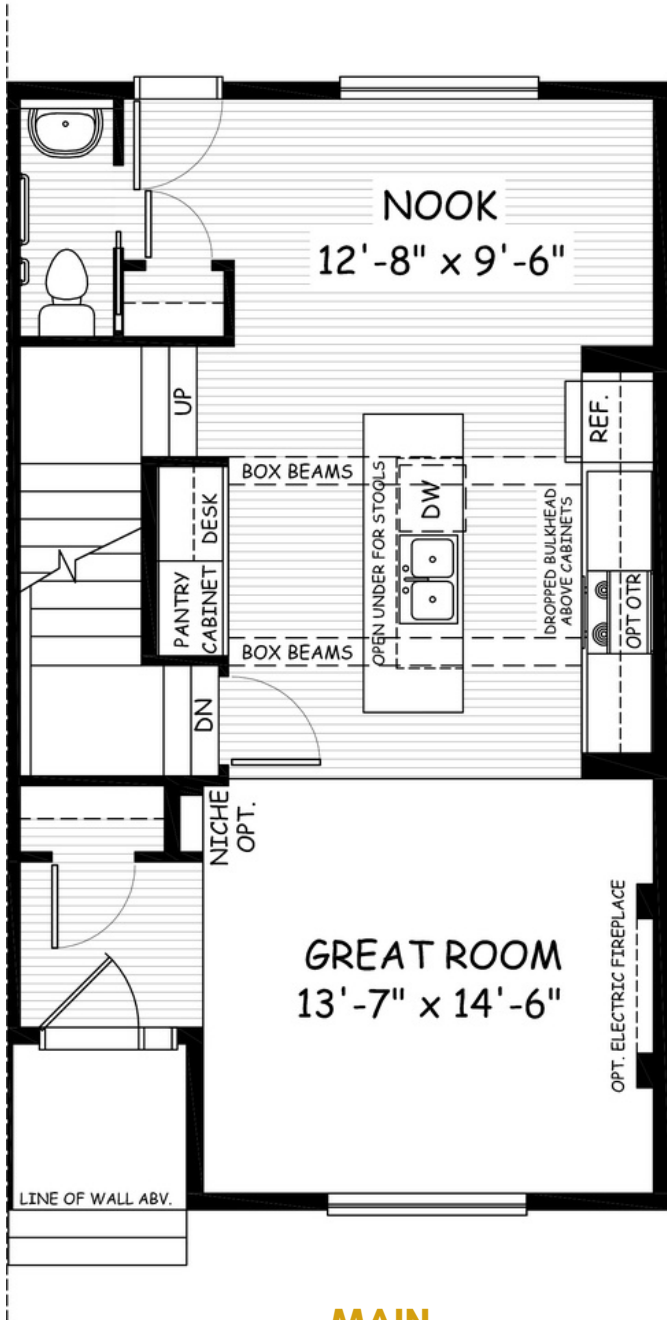


Artists's representation, may not be exactly as shown - all dimensions are approximate. All plans/designs are the exclusive property of Douglas Homes Ltd. Prices are subject to change without notice.

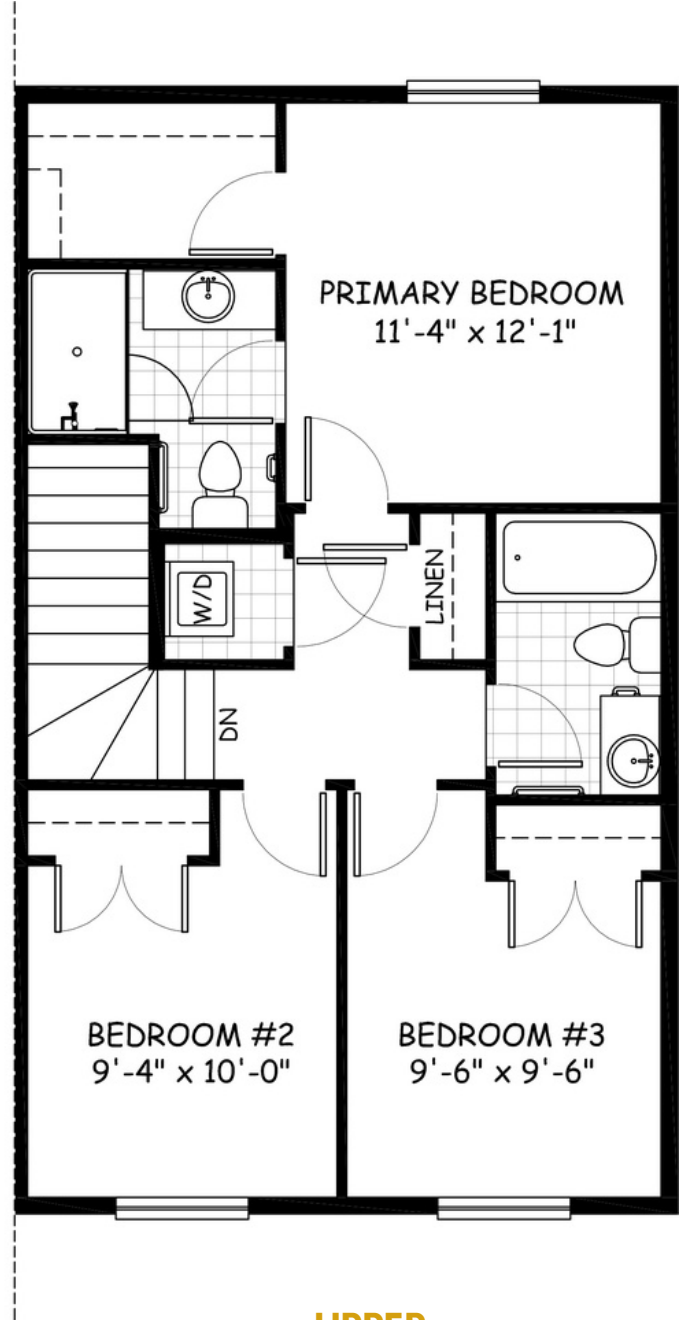
the Melbourne

1288 sq.ft.

20' wide
34' long



MAIN
653 sq.ft.



UPPER
635 sq.ft.

April 2021. Artists's representation, may not be exactly as shown and all dimensions are approximate. All plans/designs are the exclusive property of Douglas Homes Ltd. Prices are subject to change without notice.

