

# Montenegro - 2257 sq.ft.

205 Aspenmere Way in Chestermere, AB

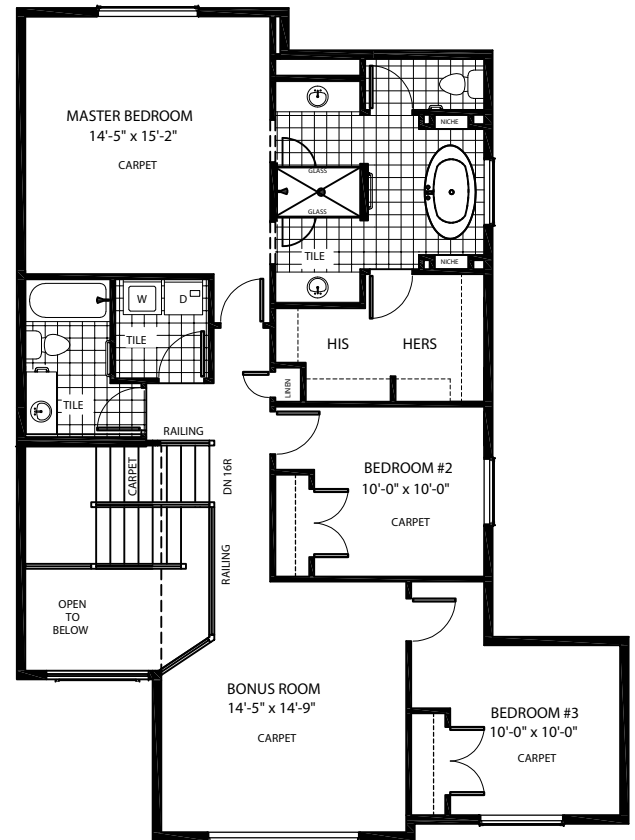
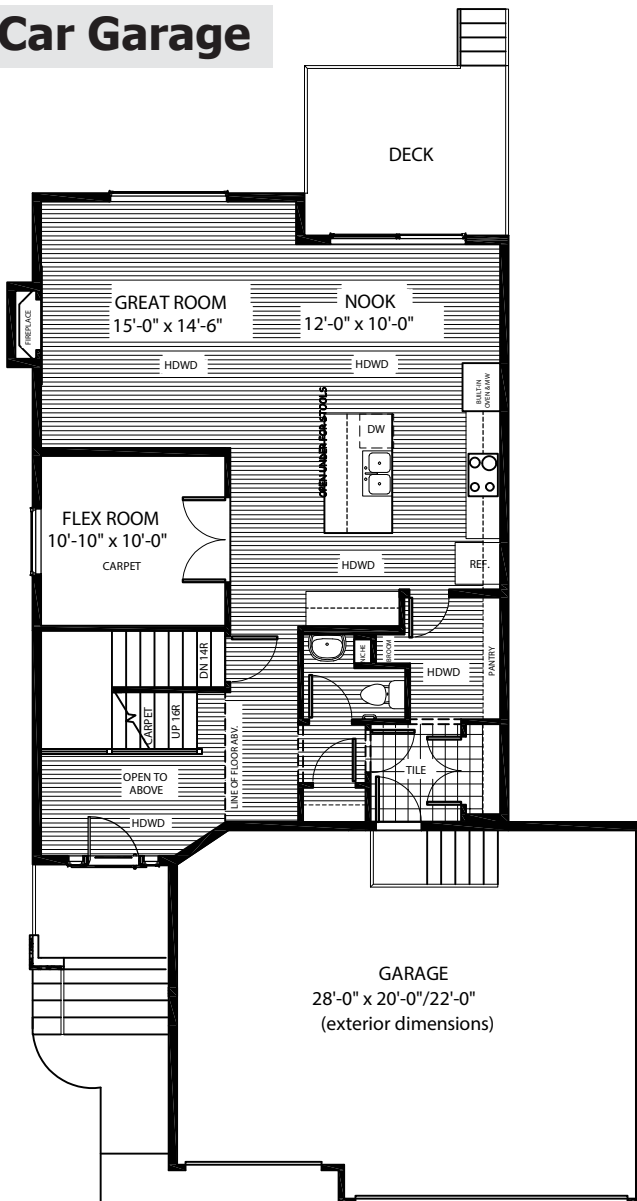


DOUGLAS HOMES  
— PERFECT FIT —

## Features

- 3 Beds, 2.5 Baths, Bonus Room, Flex Room
- Master Ensuite has Double Sinks, Free Standing Tub, Tiled Shower and a Large Walk-in Closet
- Boxed-out Gas Fireplace
- Upper Floor Laundry
- 9' Main Floor Ceiling
- Quartz Countertops
- Hardwood Floors on Main and Carpet in Flex Room

## Triple Car Garage



[www.douglashomes.net](http://www.douglashomes.net)



Douglas Homes Ltd



@douglashomesltd



@DouglasHomesLtd

Artist's representation, may not be exactly as shown - all dimensions are approximate. Douglas Homes reserves the right to make changes/substitutions to improve this home while under construction. Pricing is subject to change without notice and is valid only on the day of issue. All designs and plans are the exclusive property of Douglas Homes Ltd.