

Melbourne - 1288 sq.ft.

57 Sunrise Way, Cochrane, AB

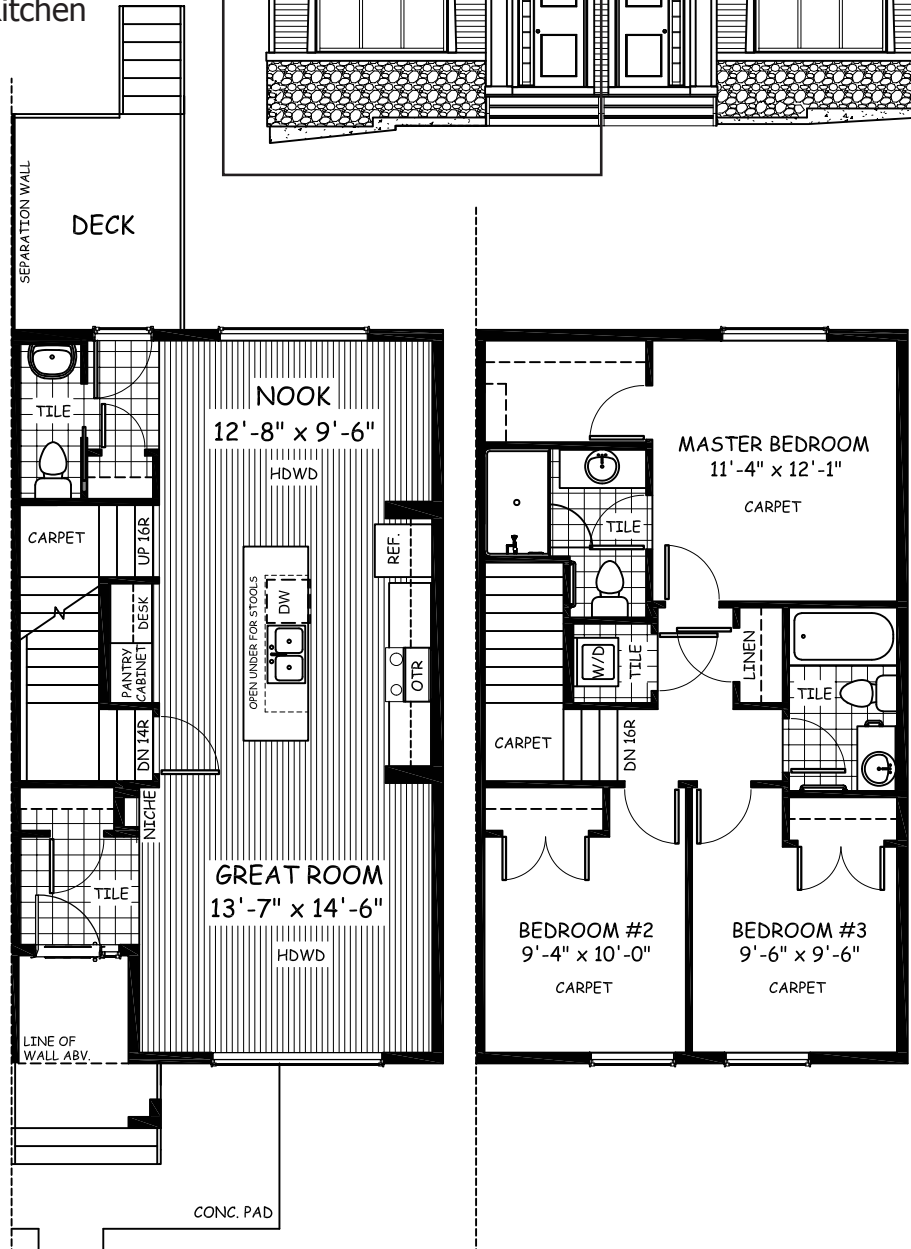


DOUGLAS HOMES
— PERFECT FIT —

Features

- 3 Beds, 2.5 Baths
- Master Bedroom with a Private Ensuite and Large Walk-in Closet
- 9' Main Floor Ceiling
- Large Bright Windows
- Quartz Countertops
- Wrought Iron Railings
- Hardwood in Great Room, Nook, and Kitchen
- Upper Floor Laundry

Large 18'x20' Gravel Pad
Oversized Rear Deck
Concrete Pad at Bottom of Porch



www.douglashomes.net



Douglas Homes Ltd



@douglashomesltd



@DouglasHomesLtd