

Perth - 1225 sq.ft.

63 Sunrise Way, Cochrane, AB



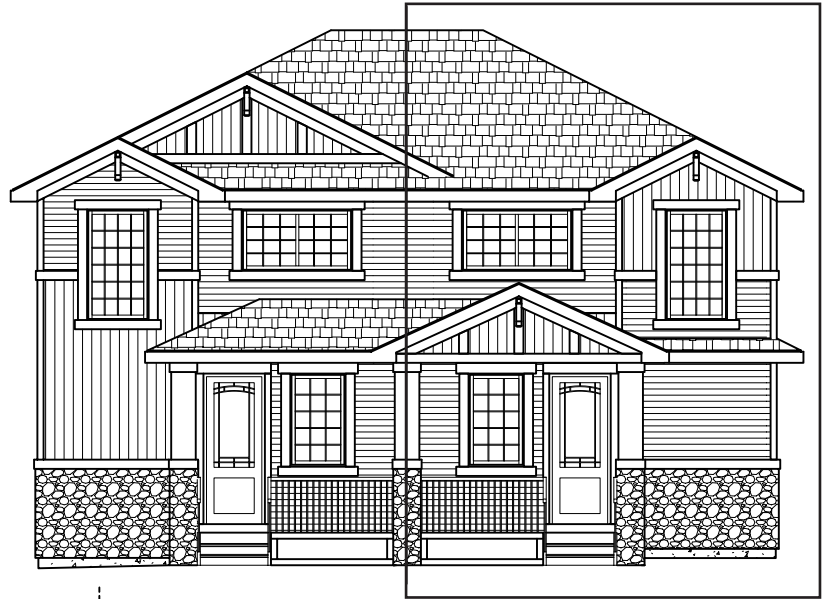
DOUGLAS HOMES

PERFECT FIT

Features

- 3 Beds, 2.5 Baths
- Master Bedroom with a Private Ensuite and Large Walk-in Closet
- 9' Main Floor Ceiling
- Large Bright Windows
- Quartz Countertops
- Wrought Iron Railings
- Hardwood in Great Room, Nook, and Kitchen
- Upper Floor Laundry

Large 18'x20' Gravel Pad
Oversized Front Veranda



www.douglashomes.net



Douglas Homes Ltd



@douglashomesltd



@DouglasHomesLtd

Artist's representation, may not be exactly as shown - all dimensions are approximate. Douglas Homes reserves the right to make changes/substitutions to improve this home while under construction. Pricing is subject to change without notice and is valid only on the day of issue. All designs and plans are the exclusive property of Douglas Homes Ltd.