

Georgetown - 2060 sq.ft.

688 Marina Drive in Chestermere, AB

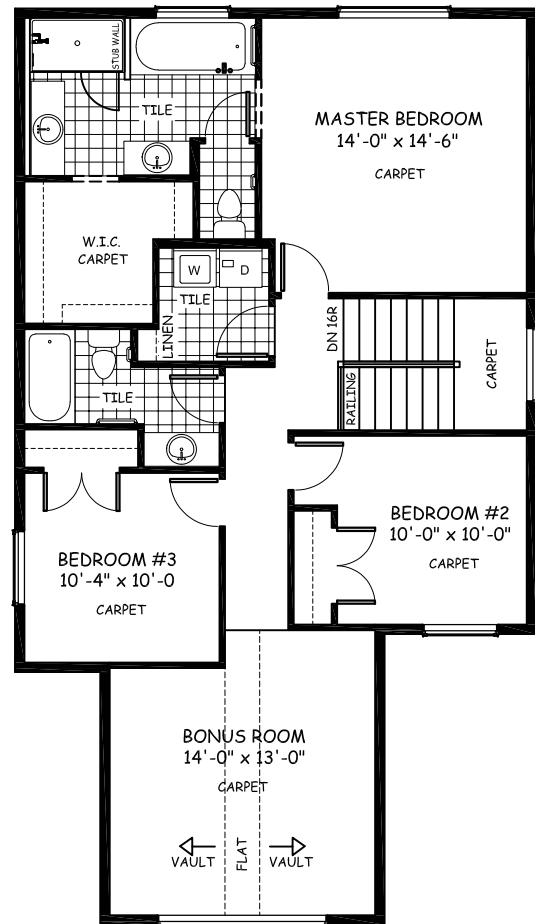
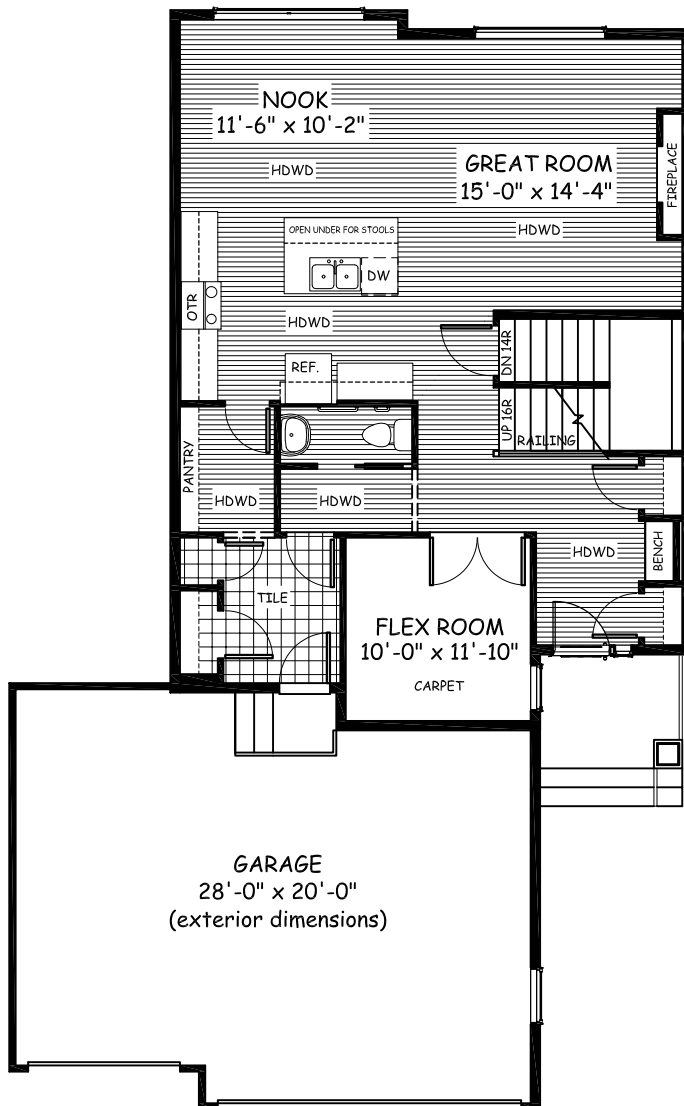


DOUGLAS HOMES
— PERFECT FIT —

Features

- 3 Beds, 2.5 Baths, Flex Room, Vaulted Bonus Room
- Master Ensuite has Double Vanities, Tiled Shower & Tub
- Boxed-in Gas Fireplace
- Built in Bench in Foyer
- Upper Floor Laundry
- 9' Main Floor Ceiling
- Quartz Countertops
- Hardwood Floors on Main and Carpet in Flex Room

Triple Car Garage



www.douglashomes.net



Douglas Homes Ltd



@douglashomesltd



@DouglasHomesLtd

Artist's representation, may not be exactly as shown - all dimensions are approximate. Douglas Homes reserves the right to make changes/substitutions to improve this home while under construction. Pricing is subject to change without notice and is valid only on the day of issue. All designs and plans are the exclusive property of Douglas Homes Ltd.