

Glen Abbey 1 - 2350 sq.ft.

689 Marina Drive in Chestermere, AB



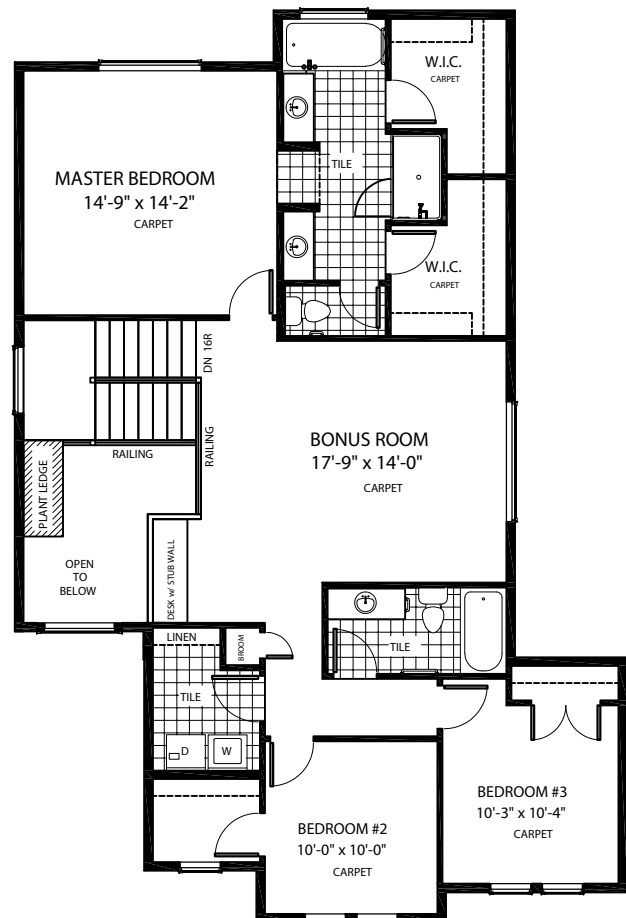
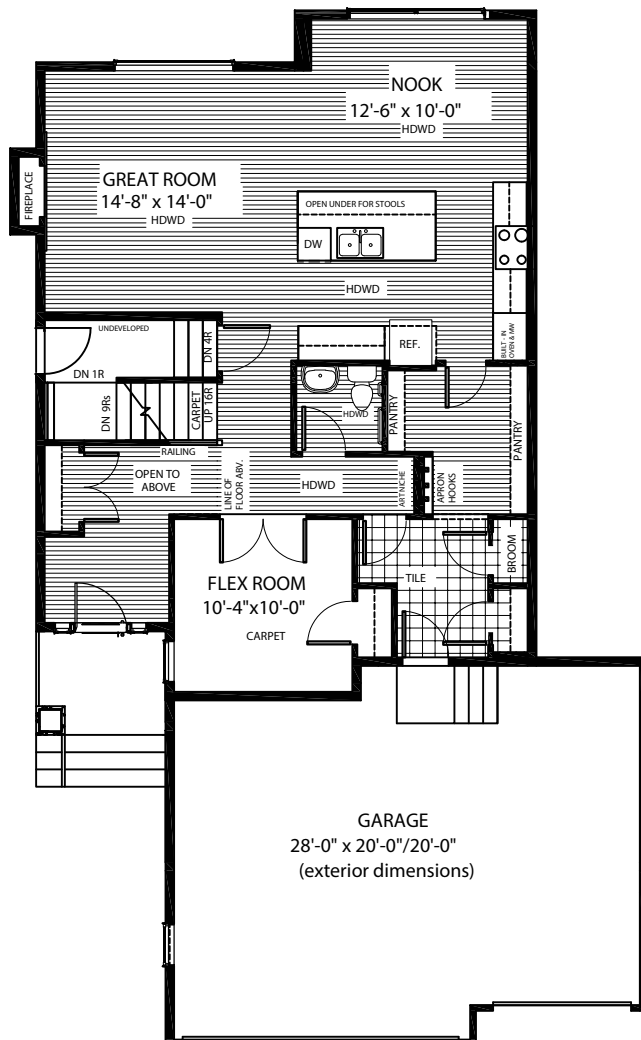
DOUGLAS HOMES

— PERFECT FIT —

Features

3 Beds, 2.5 Baths, Bonus Room, Flex Room
Master Ensuite has Double Sinks, Tiled Shower,
and Two Walk-in Closets
Boxed Out Gas Fireplace
Upper Floor Laundry
9' Main Floor Ceiling
Quartz Countertops
Hardwood on Main Floor with Carpet in the Flex Room

Triple Car Garage



www.douglashomes.net



Douglas Homes Ltd



@douglashomesltd



@DouglasHomesLtd

Artist's representation, may not be exactly as shown - all dimensions are approximate. Douglas Homes reserves the right to make changes/substitutions to improve this home while under construction. Pricing is subject to change without notice and is valid only on the day of issue. All designs and plans are the exclusive property of Douglas Homes Ltd.