

the Montana 1

2114
sq.ft.



3 bedrooms



2.5 bathrooms



34'-8" wide



NOTES:

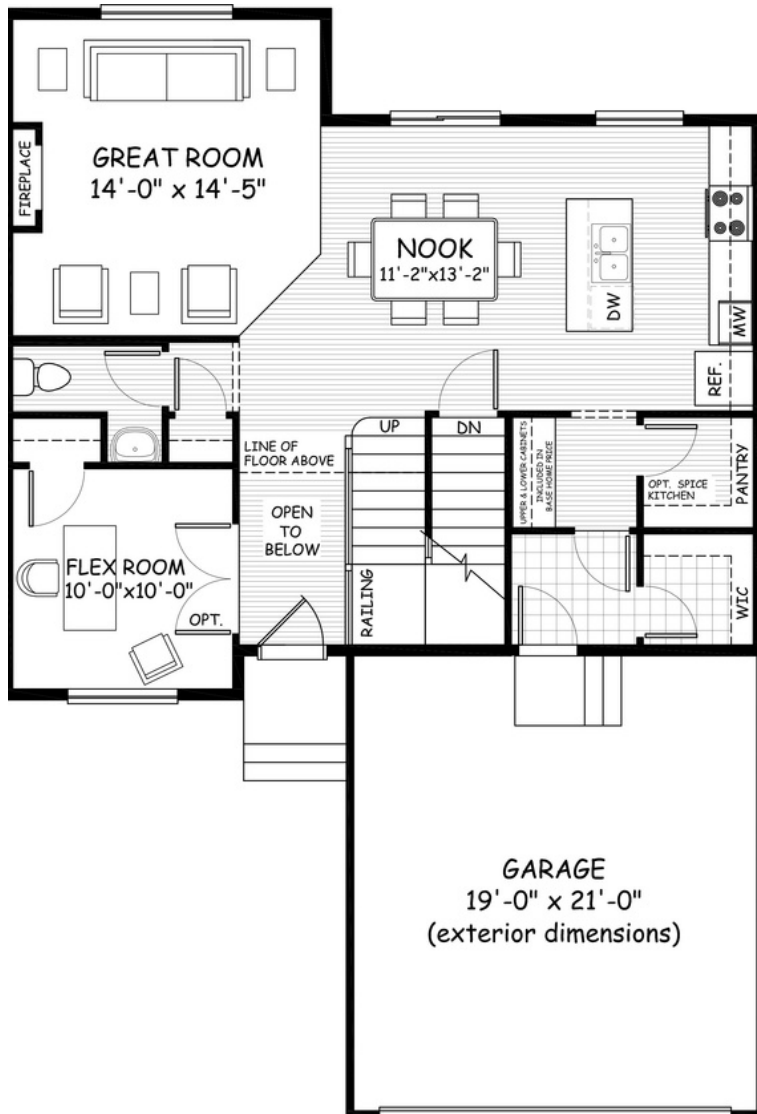


Artists's representation, may not be exactly as shown - all dimensions are approximate. All plans/designs are the exclusive property of Douglas Homes Ltd. Prices are subject to change without notice.

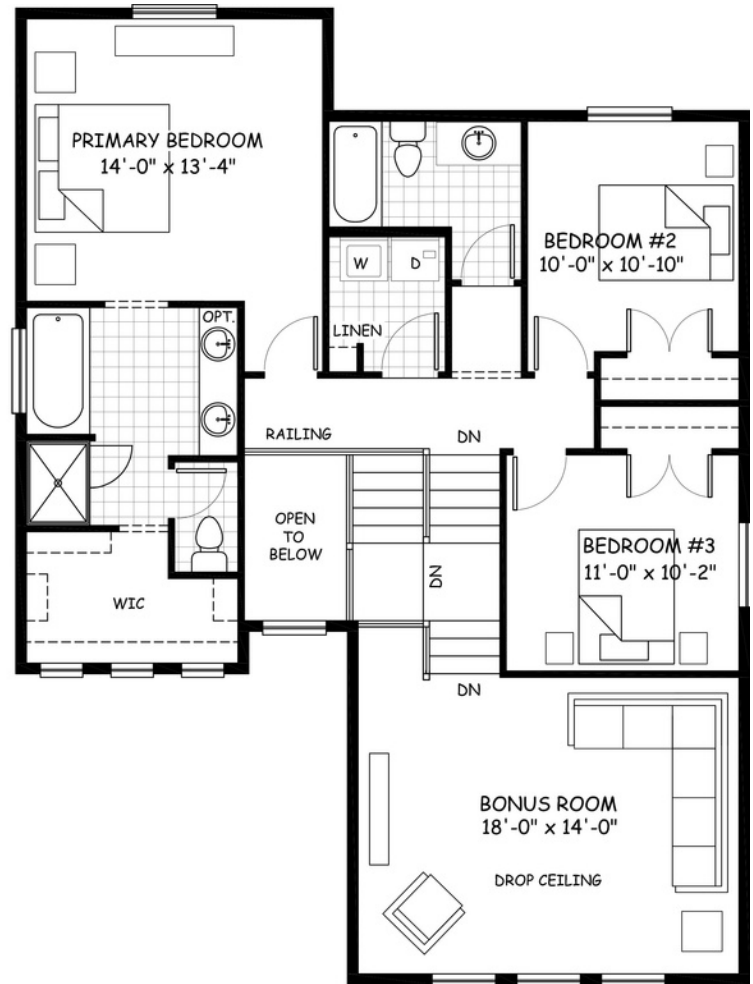
the Montana 1

2114 sq.ft.

34'-8" wide
50'-5" long



MAIN
946 sq.ft.



UPPER
1168 sq.ft.

June 2021. Artists's representation, may not be exactly as shown and all dimensions are approximate.
All plans/designs are the exclusive property of Douglas Homes Ltd. Prices are subject to change without notice.

DH
DOUGLAS HOMES
— PERFECT FIT —