

Melbourne - 1288 sq.ft.

7 Sunrise Heights, Cochrane, AB



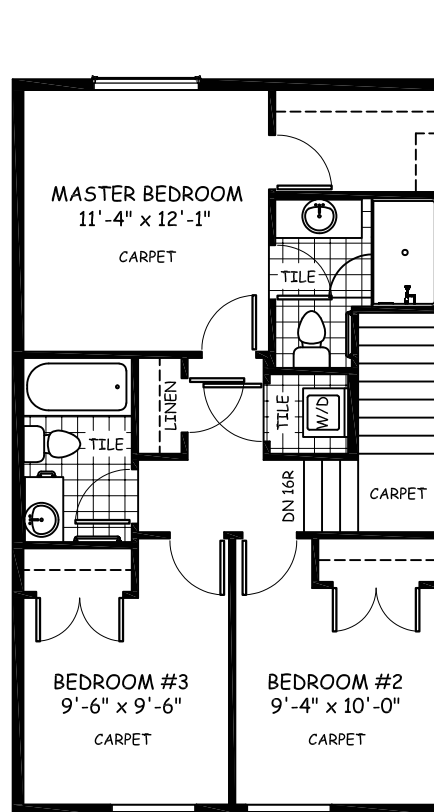
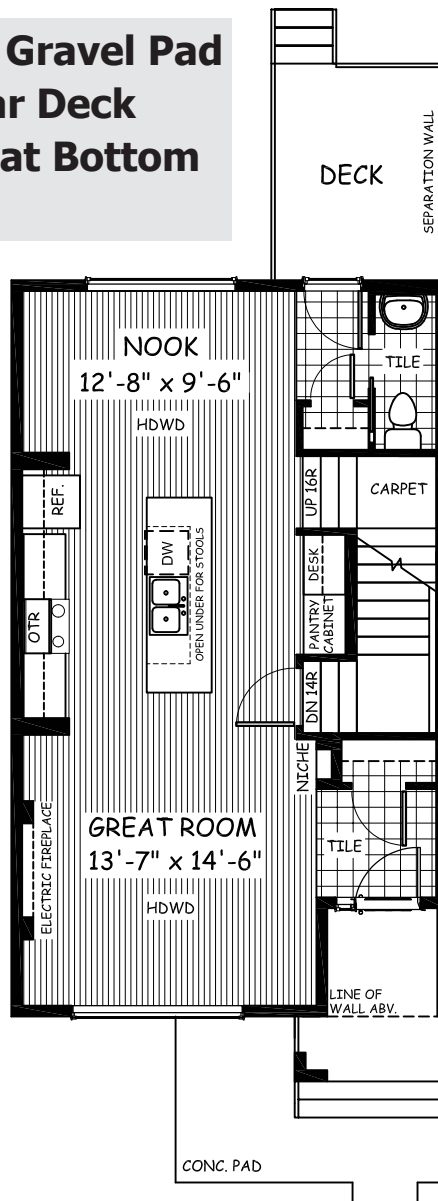
DOUGLAS HOMES

— PERFECT FIT —

Features

3 Beds, 2.5 Baths
Master Bedroom with a Private Ensuite
and Large Walk-in Closet
9' Main Floor Ceiling
Large Bright Windows
Quartz Countertops
Wrought Iron Railings
Hardwood in Great Room, Nook, and Kitchen
Upper Floor Laundry

Large 18'x20' Gravel Pad
Oversized Rear Deck
Concrete Pad at Bottom
of Porch



www.douglashomes.net



Douglas Homes Ltd



@douglashomesltd



@DouglasHomesLtd

Artist's representation, may not be exactly as shown - all dimensions are approximate. Douglas Homes reserves the right to make changes/substitutions to improve this home while under construction. Pricing is subject to change without notice and is valid only on the day of issue. All designs and plans are the exclusive property of Douglas Homes Ltd.