

# Melbourne - 1288 sq.ft.

7 Sunrise Heights, Cochrane, AB

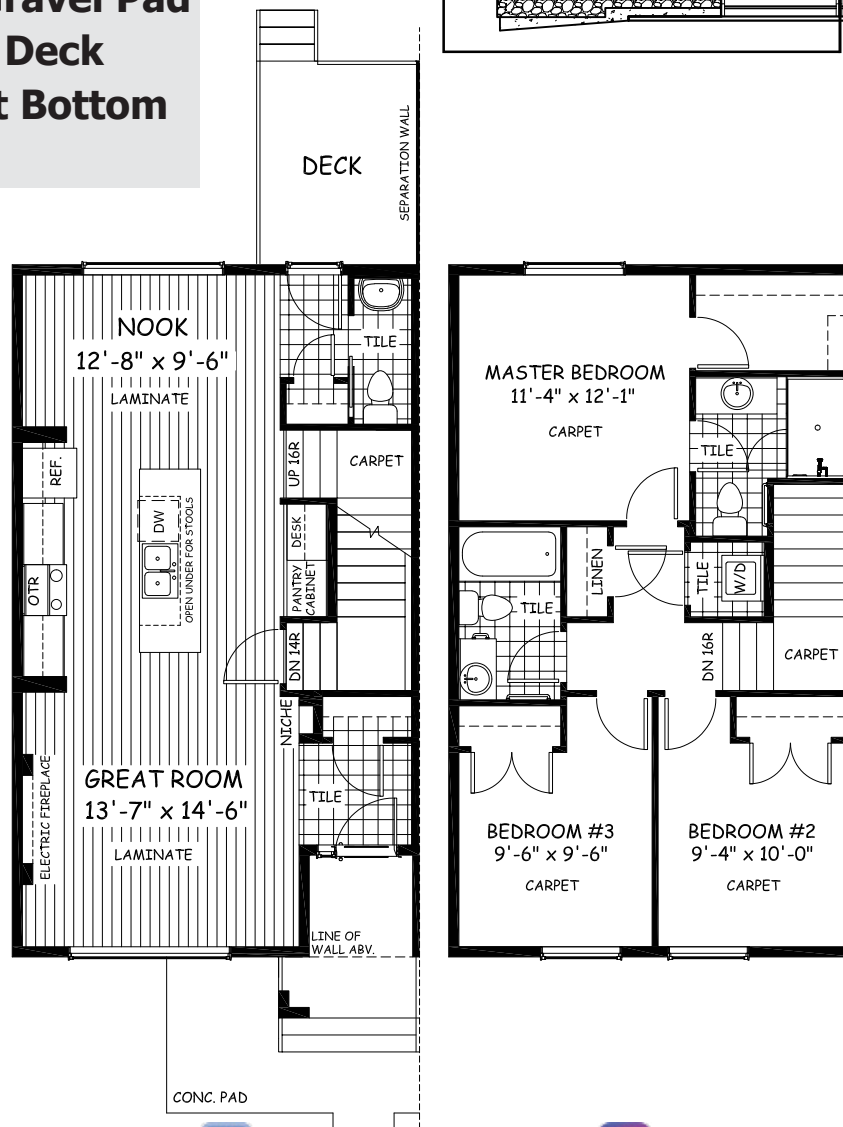


DOUGLAS HOMES  
— PERFECT FIT —

## Features

- 3 Beds, 2.5 Baths
- Master Bedroom with a Private Ensuite and Large Walk-in Closet
- 9' Main Floor Ceiling
- Large Bright Windows
- Quartz Countertops
- Wrought Iron Railings
- High-end Laminate in Great Room, Nook, and Kitchen
- Upper Floor Laundry

**Large 18'x20' Gravel Pad**  
**Oversized Rear Deck**  
**Concrete Pad at Bottom of Porch**



[www.douglashomes.net](http://www.douglashomes.net)



Douglas Homes Ltd



@douglashomesltd



@DouglasHomesLtd