

# Melbourne - 1288 sq.ft.

9 Sunrise Heights, Cochrane, AB

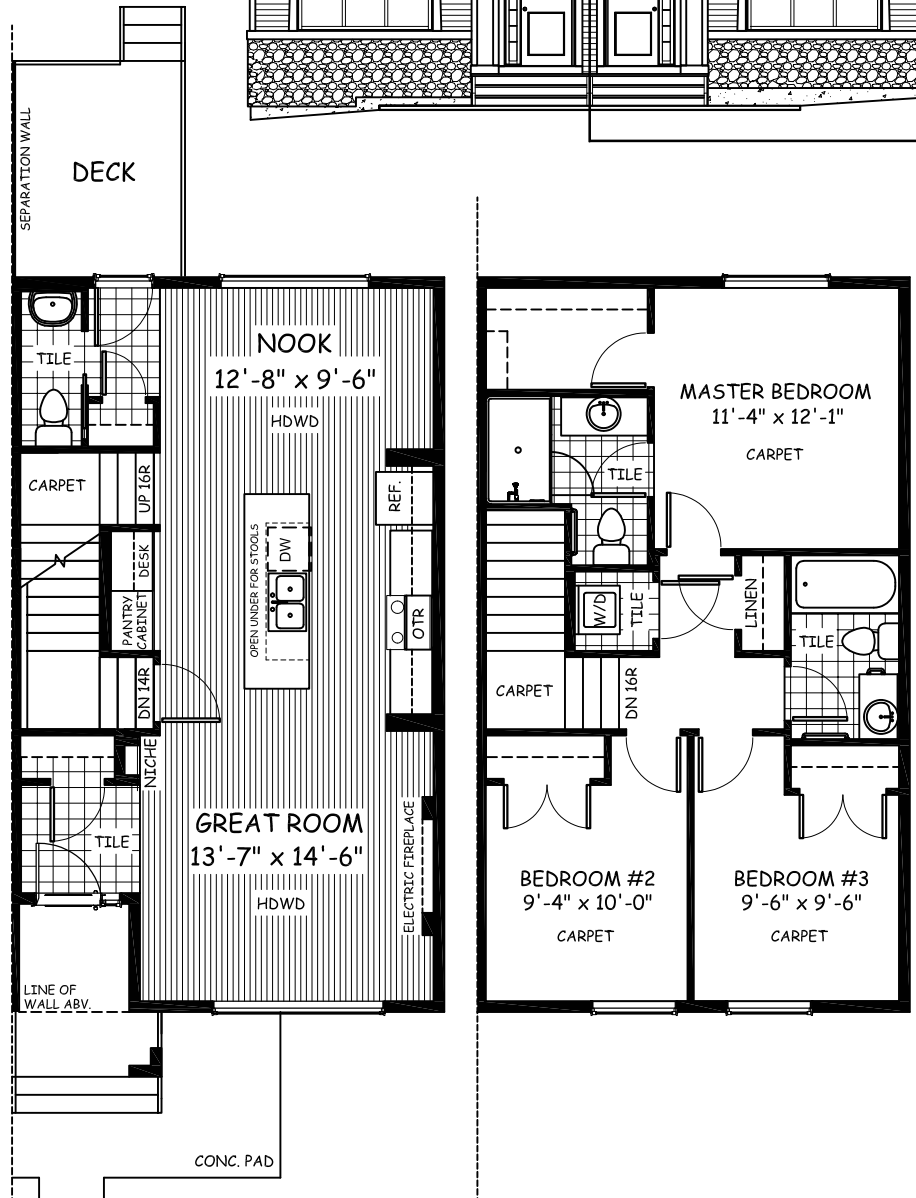


DOUGLAS HOMES  
— PERFECT FIT —

## Features

- 3 Beds, 2.5 Baths
- Master Bedroom with a Private Ensuite and Large Walk-in Closet
- 9' Main Floor Ceiling
- Large Bright Windows
- Quartz Countertops
- Wrought Iron Railings
- Hardwood in Great Room, Nook, and Kitchen
- Upper Floor Laundry

**Large 18'x20' Gravel Pad**  
**Oversized Rear Deck**  
**Concrete Pad at Bottom of Porch**



[www.douglashomes.net](http://www.douglashomes.net)



Douglas Homes Ltd



@douglashomesltd



@DouglasHomesLtd

Artist's representation, may not be exactly as shown - all dimensions are approximate. Douglas Homes reserves the right to make changes/substitutions to improve this home while under construction. Pricing is subject to change without notice and is valid only on the day of issue. All designs and plans are the exclusive property of Douglas Homes Ltd.