

Mount Rundle - 2060 sq.ft.

696 Marina Drive in Chestermere, AB

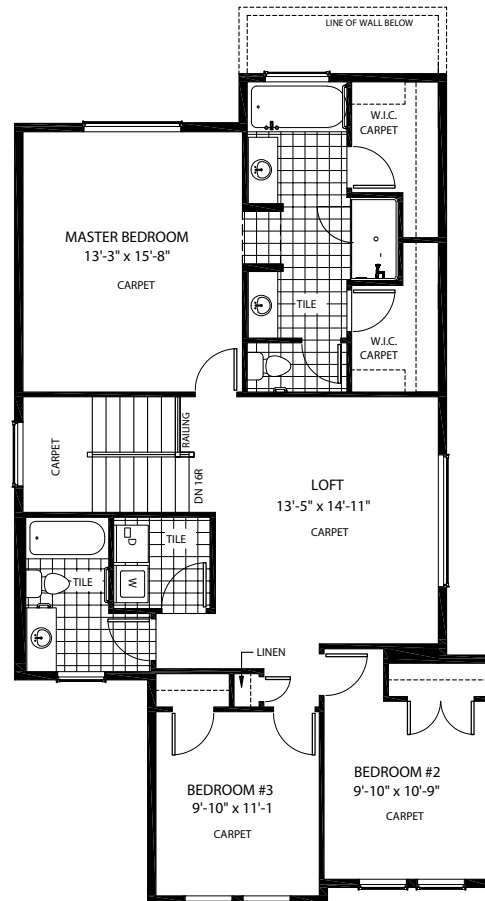
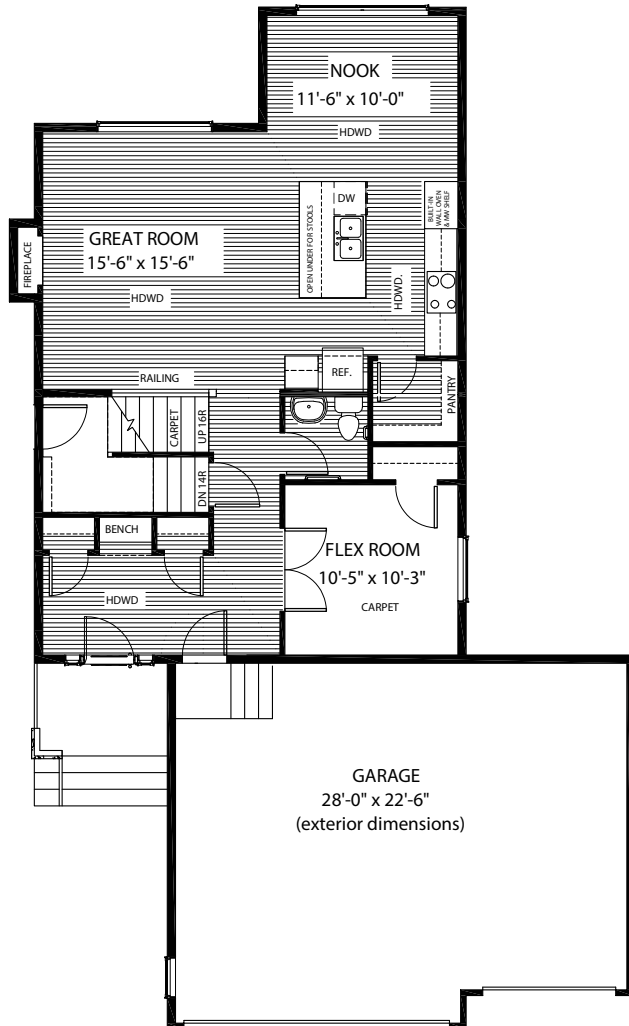


DOUGLAS HOMES
— PERFECT FIT —

Features

3 Beds, 2.5 Baths, Flex Room, Loft
Master Ensuite has Double Sinks, Tiled Shower,
and 2 Walk-in Closets
Boxed Out Gas Fireplace
Built In Foyer Bench
Upper Floor Laundry
9' Main Floor Ceilings
Quartz Countertops
Hardwood Floors

Triple Car Garage



www.douglashomes.net



Douglas Homes Ltd



@douglashomesltd



@DouglasHomesLtd

Artist's representation, may not be exactly as shown - all dimensions are approximate. Douglas Homes reserves the right to make changes/substitutions to improve this home while under construction. Pricing is subject to change without notice and is valid only on the day of issue. All designs and plans are the exclusive property of Douglas Homes Ltd.