

# *the* **Brisbane**

**1180**  
**sq.ft.**



3 bedrooms



2.5 bathrooms



20' wide



NOTES:

---

---

---

---

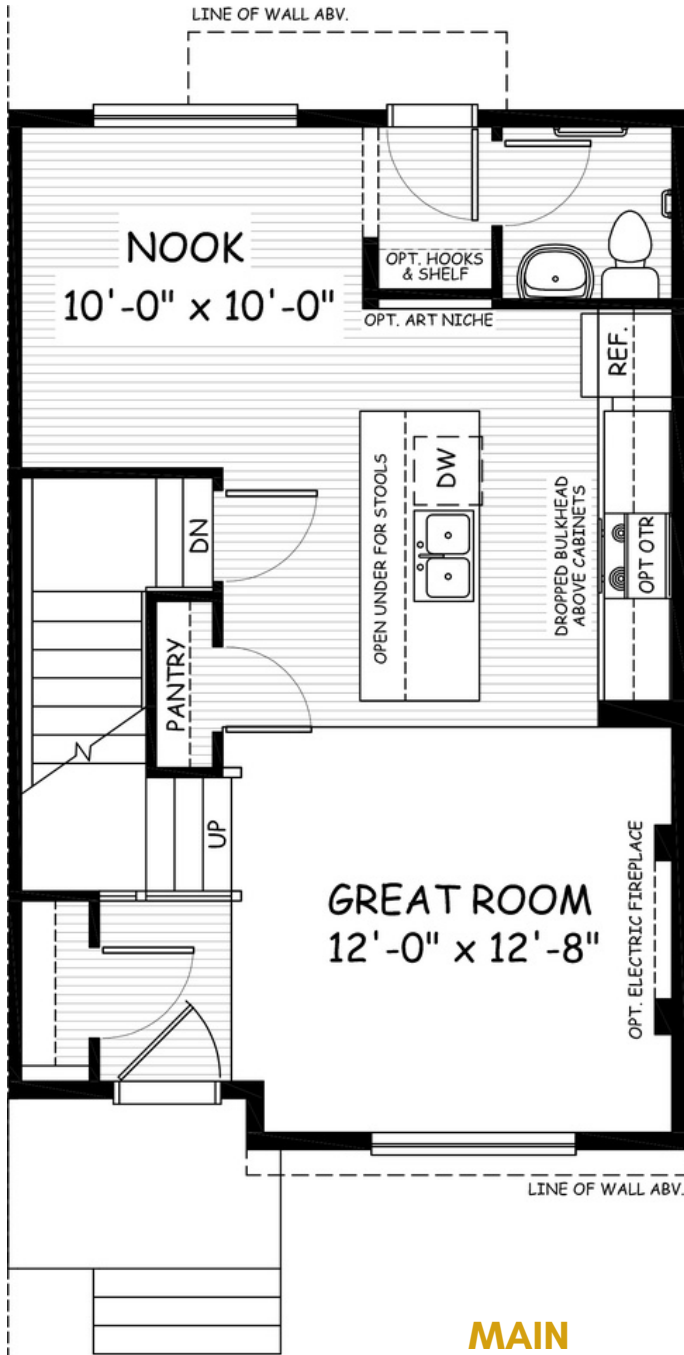


Artists's representation, may not be exactly as shown - all dimensions are approximate. All plans/designs are the exclusive property of Douglas Homes Ltd. Prices are subject to change without notice.

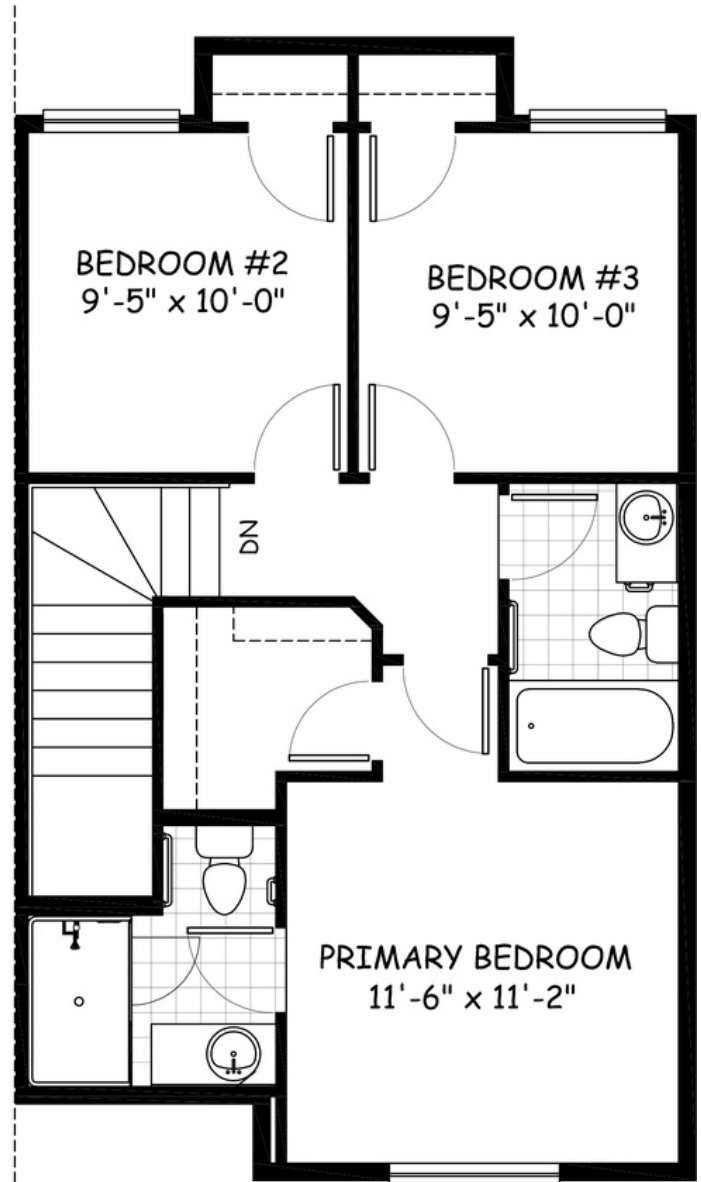
# the Brisbane

**1180 sq.ft.**

20' wide  
34' long



**MAIN**  
600 sq.ft.



**UPPER**  
580 sq.ft.

March 2023. Artists's representation, may not be exactly as shown and all dimensions are approximate.  
All plans/designs are the exclusive property of Douglas Homes Ltd. Prices are subject to change without notice.

**DH**  
DOUGLAS HOMES  
— PERFECT FIT —