

# Grand Valley - 1836 sq.ft.

705 Marina Drive in Chestermere, AB



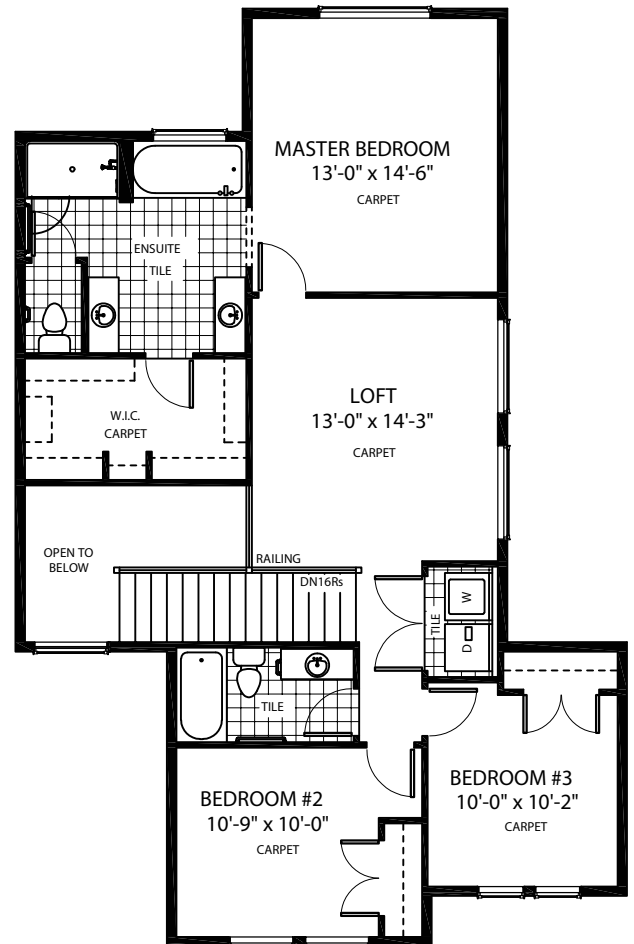
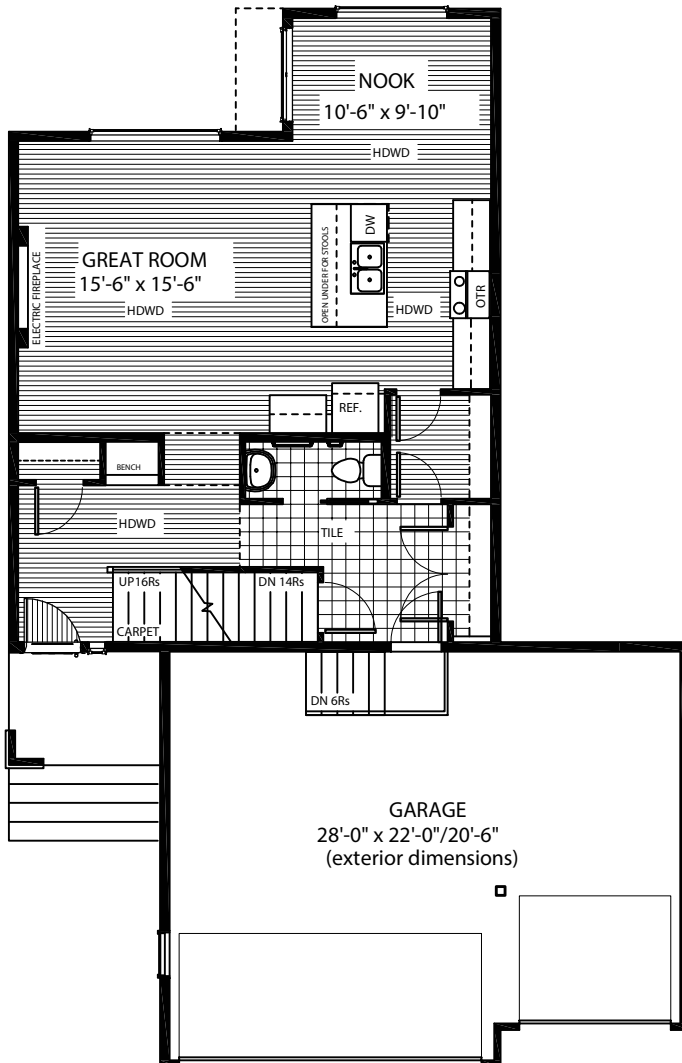
DOUGLAS HOMES

PERFECT FIT

## Features

- 3 Beds, 2.5 Baths, & Upper Floor Loft
- Master Ensuite has Double Vanities, Shower, & Drop-in Tub
- Boxed in Electric Fireplace
- Built In Foyer Bench
- Upper Floor Laundry
- 9' Main Floor Ceilings
- Quartz Countertops
- Hardwood Floors throughout Main Floor

## Triple Car Garage



[www.douglashomes.net](http://www.douglashomes.net)



Douglas Homes Ltd



@douglashomesltd



@DouglasHomesLtd

Artist's representation, may not be exactly as shown - all dimensions are approximate. Douglas Homes reserves the right to make changes/substitutions to improve this home while under construction. Pricing is subject to change without notice and is valid only on the day of issue. All designs and plans are the exclusive property of Douglas Homes Ltd.