

# *the* Vermilon

**1461  
sq.ft.**



3 bedrooms



2.5 bathrooms



22' wide



NOTES:

---

---

---

---

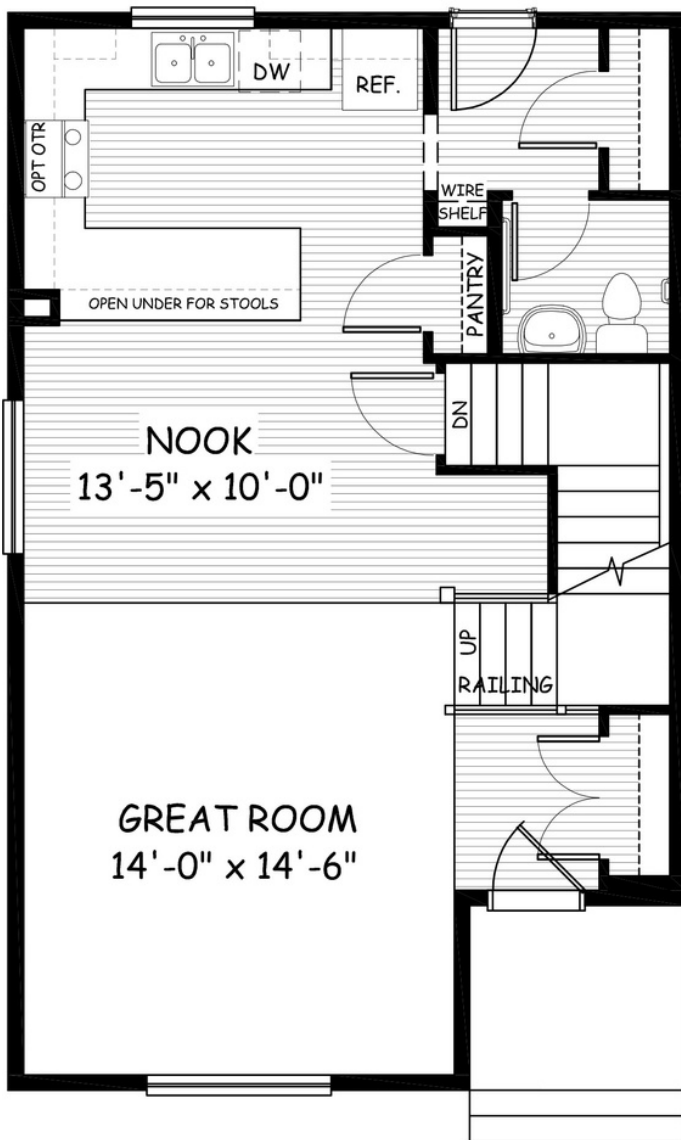


Artists's representation, may not be exactly as shown - all dimensions are approximate. All plans/designs are the exclusive property of Douglas Homes Ltd. Prices are subject to change without notice.

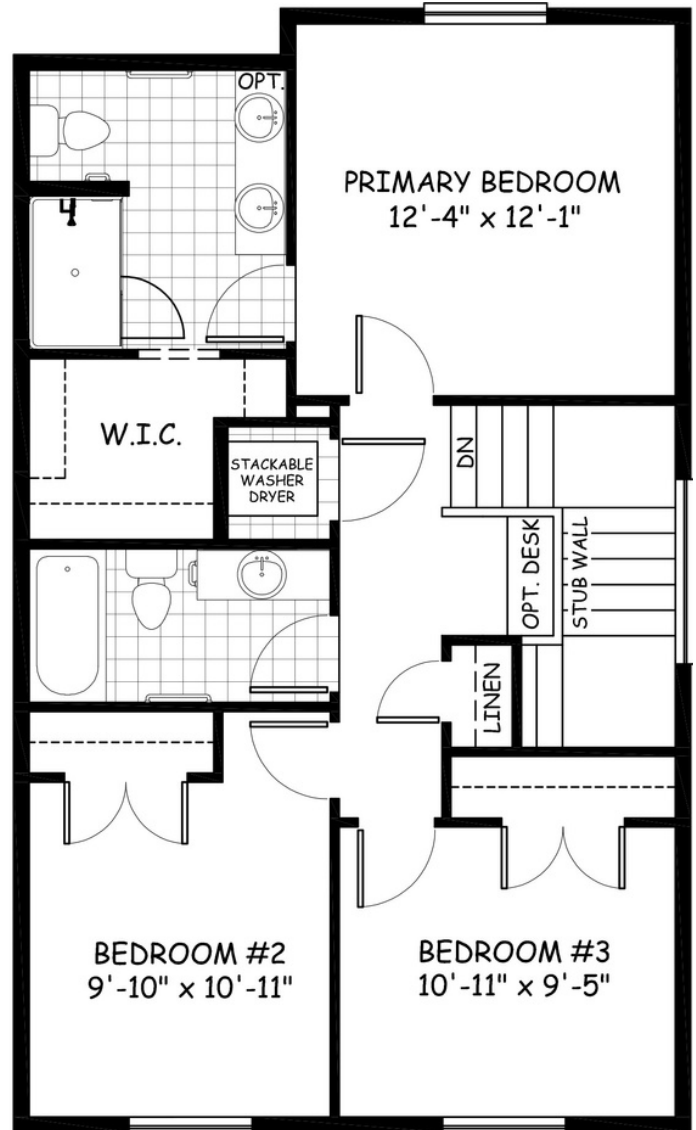
# the Vermilon

**1461 sq.ft.**

22' wide  
36'-6" long



**MAIN**  
728 sq.ft.



**UPPER**  
733 sq.ft.

April 2021. Artists's representation, may not be exactly as shown and all dimensions are approximate.  
All plans/designs are the exclusive property of Douglas Homes Ltd. Prices are subject to change without notice.

**DH**  
DOUGLAS HOMES  
— PERFECT FIT —