

Montenegro 2 - 2149 sq.ft.

685 Marina Drive in Chestermere, AB

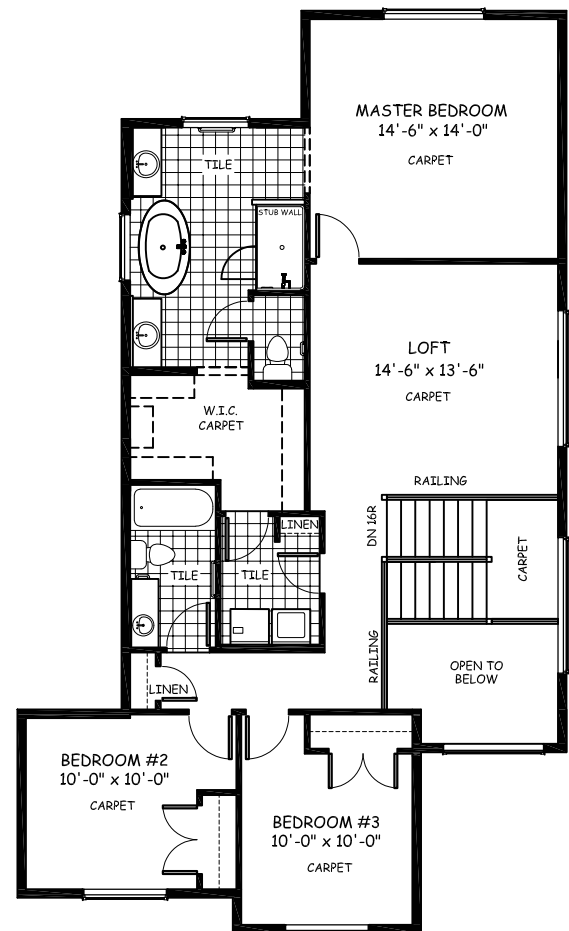
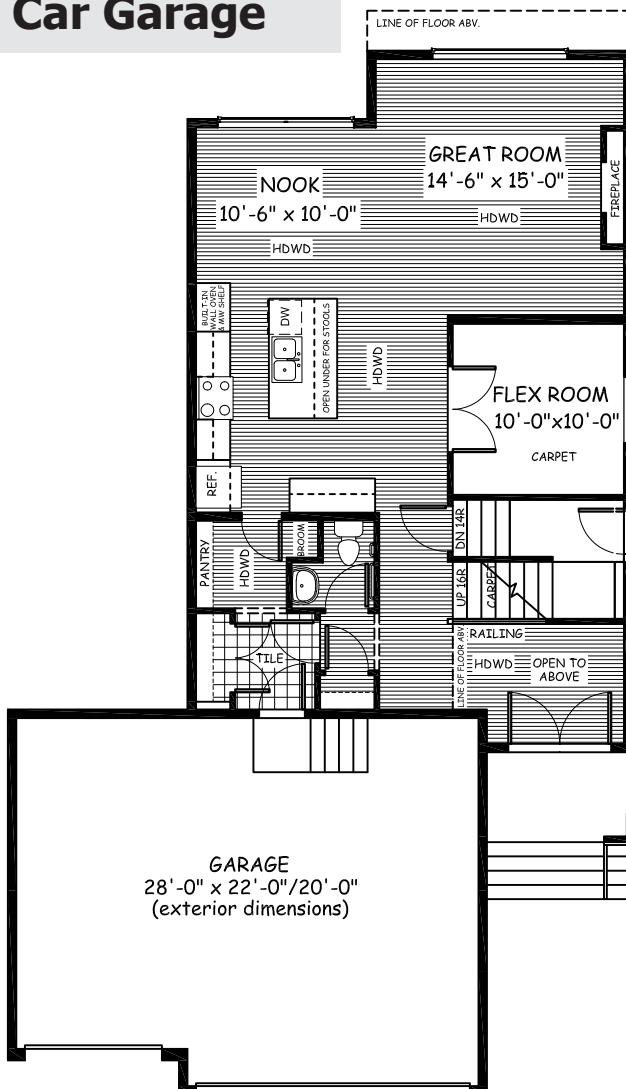


DOUGLAS HOMES
— PERFECT FIT —

Features

- 3 Beds, 2.5 Baths, Flex Room, Loft
- Master Ensuite has Double Sinks, Tiled Shower w/ stub wall, Free Standing Tub, and a Large Walk-in Closet
- Boxed-in Gas Fireplace
- Upper Floor Laundry
- 9' Main Floor Ceilings
- Quartz Countertops
- Hardwood Floors

Private Side Entrance
Door to Basement
& Triple Car Garage



www.douglashomes.net



Douglas Homes Ltd



@douglashomesltd



@DouglasHomesLtd