

# the **Victoria**

**1393**  
**sq.ft.**



3 bedrooms



2.5 bathrooms



22' wide



NOTES:

---

---

---

---

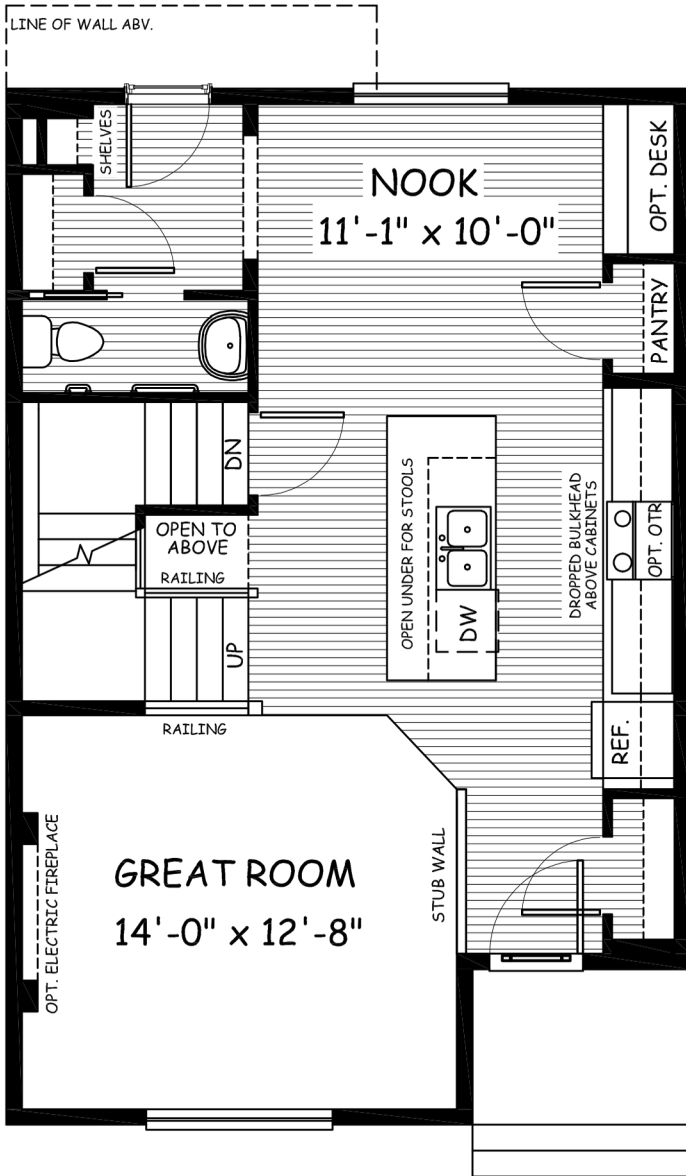


Artists's representation, may not be exactly as shown - all dimensions are approximate. All plans/designs are the exclusive property of Douglas Homes Ltd. Prices are subject to change without notice.

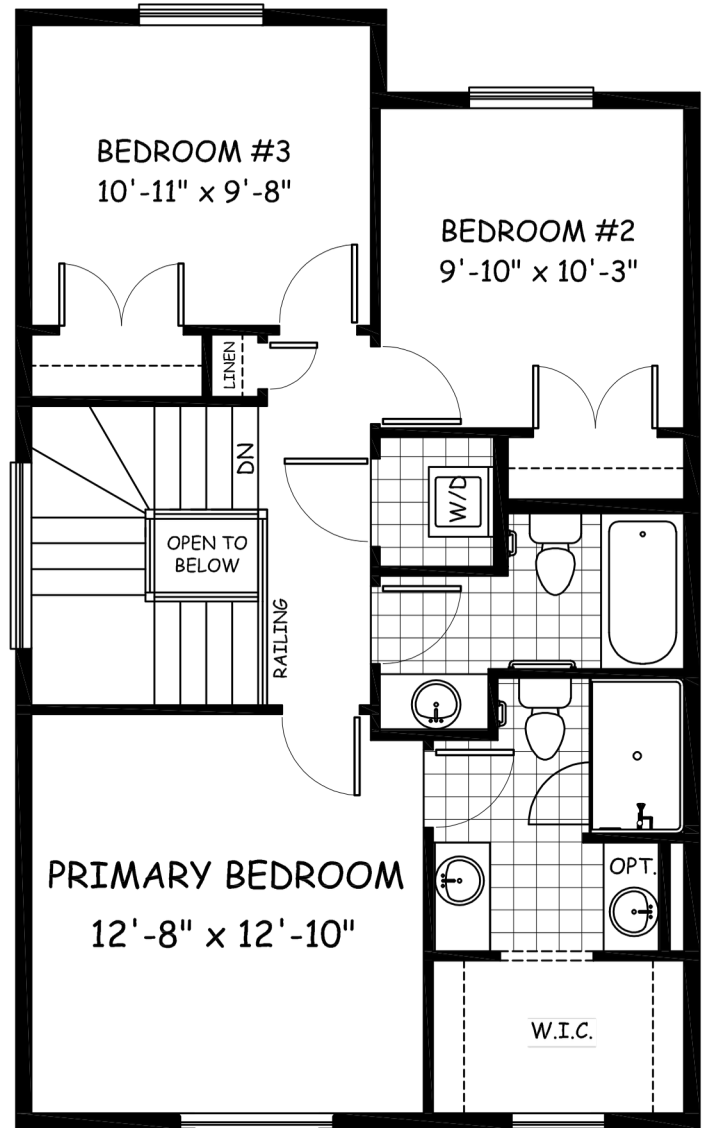
# the Victoria

1393 sq.ft.

22' wide  
36' long



**MAIN**  
698 sq.ft.



**UPPER**  
695 sq.ft.

Feb. 2023. Artist's representation, may not be exactly as shown and all dimensions are approximate. All plans/designs are the exclusive property of Douglas Homes Ltd. Prices are subject to change without notice.

