

Melbourne - 1288 sq.ft.

23 Sunrise Heights, Cochrane, AB

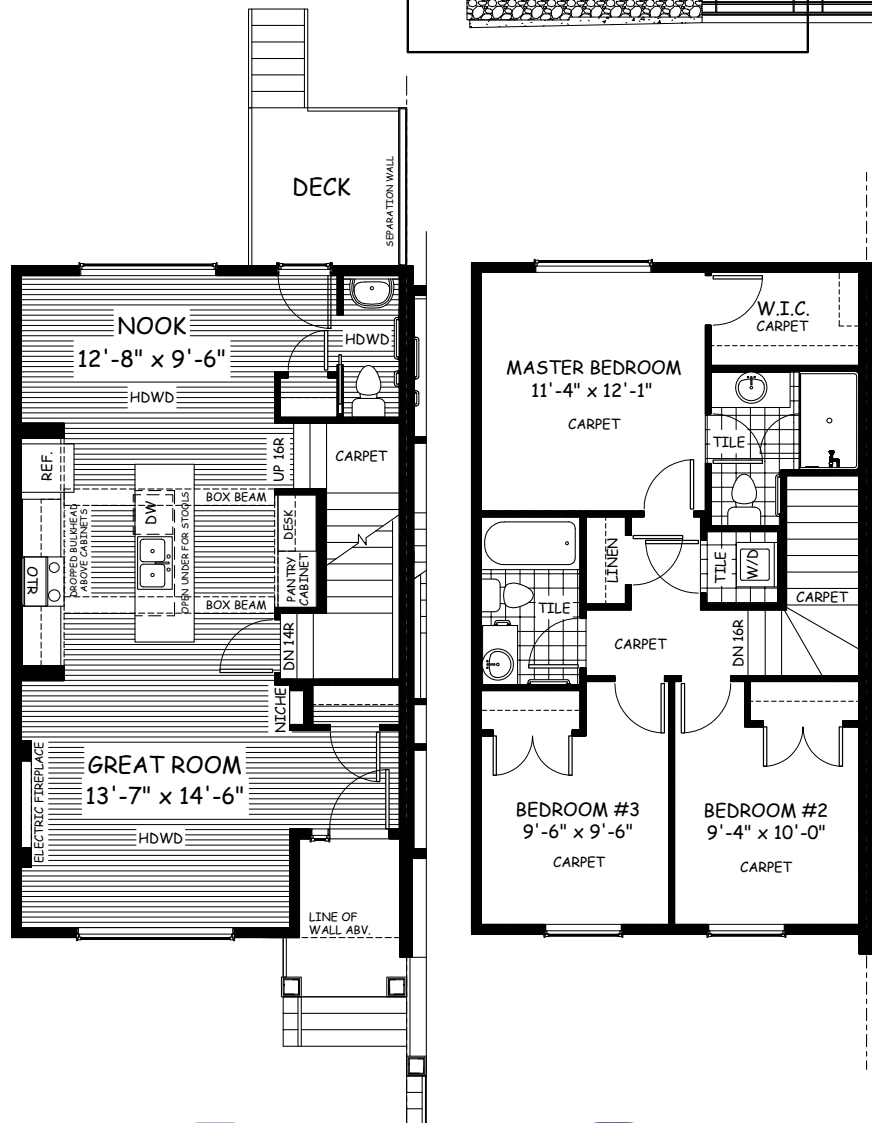
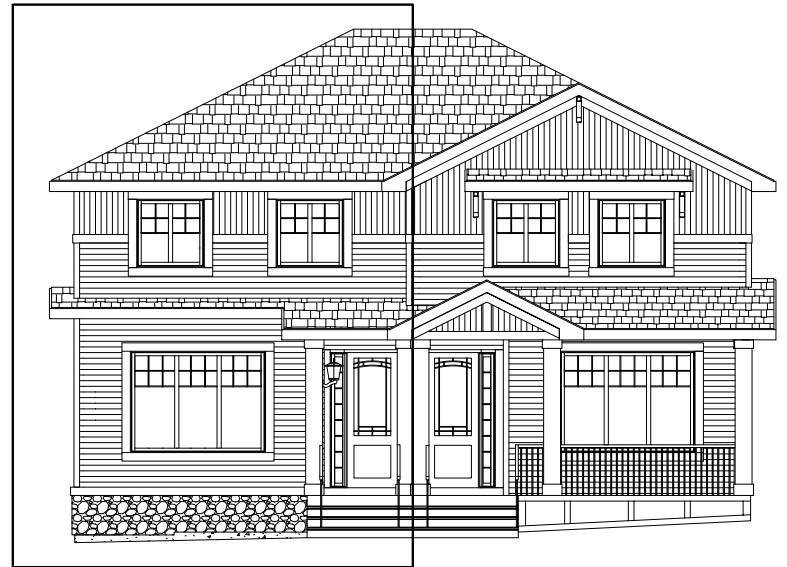


DOUGLAS HOMES
— PERFECT FIT —

Features

- 3 Beds, 2.5 Baths
- Master Bedroom with a Private Ensuite and Large Walk-in Closet
- 9' Main Floor Ceiling w/ Large Bright Windows
- Quartz Countertops
- Hardwood Floors
- Upper Floor Laundry
- Modern Linear Electric Fireplace

Large Gravel Parking Pad



www.douglashomes.net



Douglas Homes Ltd



@douglashomesltd



@DouglasHomesLtd

Artist's representation, may not be exactly as shown - all dimensions are approximate. Douglas Homes reserves the right to make changes/substitutions to improve this home while under construction. Pricing is subject to change without notice and is valid only on the day of issue. All designs and plans are the exclusive property of Douglas Homes Ltd.