

Glacier - 1180 sq.ft.

321 Sundown Road, Cochrane, AB



DOUGLAS HOMES

— PERFECT FIT —

Features

3 Beds, 2.5 Baths

Master Bedroom with a Private Ensuite
and Large Walk-in Closet

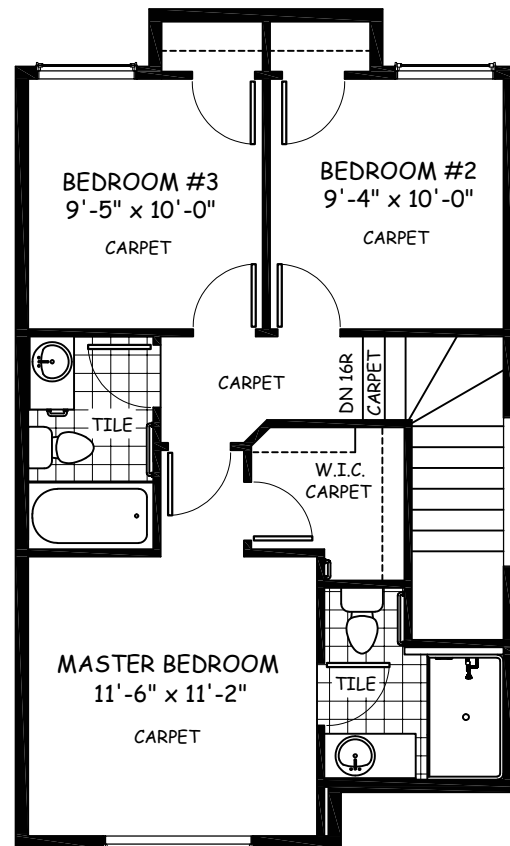
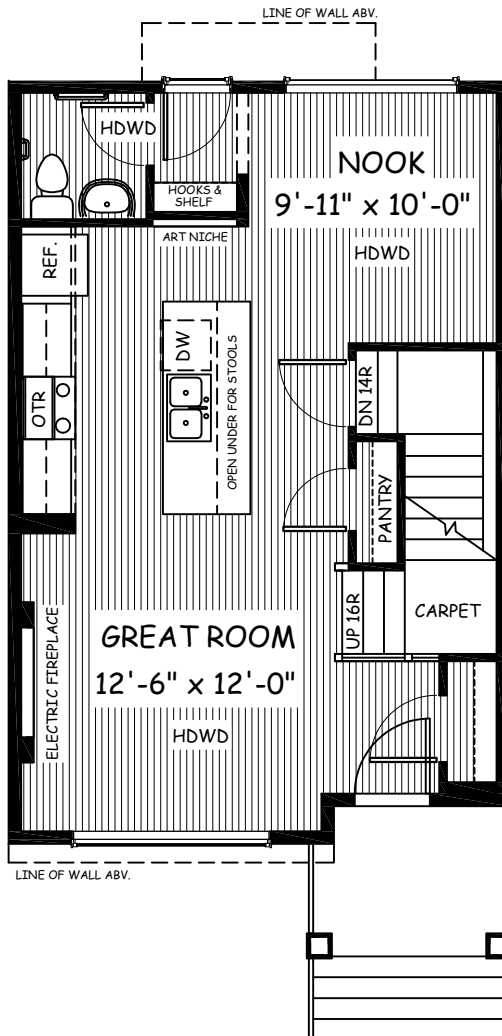
9' Main Floor Ceiling w/ Large Bright Windows

Quartz Countertops

Wrought Iron Railings

Hardwood Floors

Modern Linear Electric Fireplace
Large Gravel Parking Pad



www.douglashomes.net



Douglas Homes Ltd



@douglashomesltd



@DouglasHomesLtd

Artist's representation, may not be exactly as shown - all dimensions are approximate. Douglas Homes reserves the right to make changes/substitutions to improve this home while under construction. Pricing is subject to change without notice and is valid only on the day of issue. All designs and plans are the exclusive property of Douglas Homes Ltd.