

# Glen Abbey 4 - 2351 sq.ft.

700 Marina Drive in Chestermere, AB



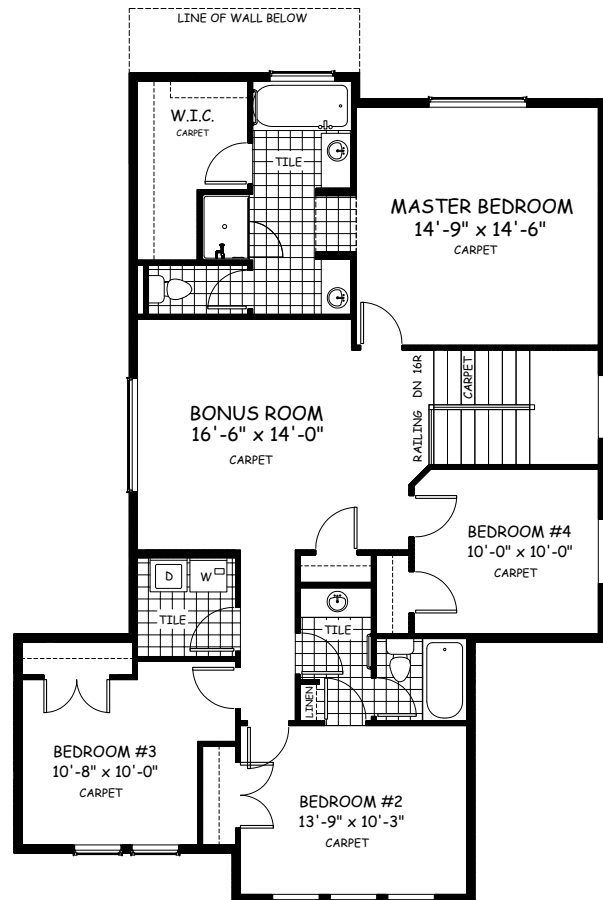
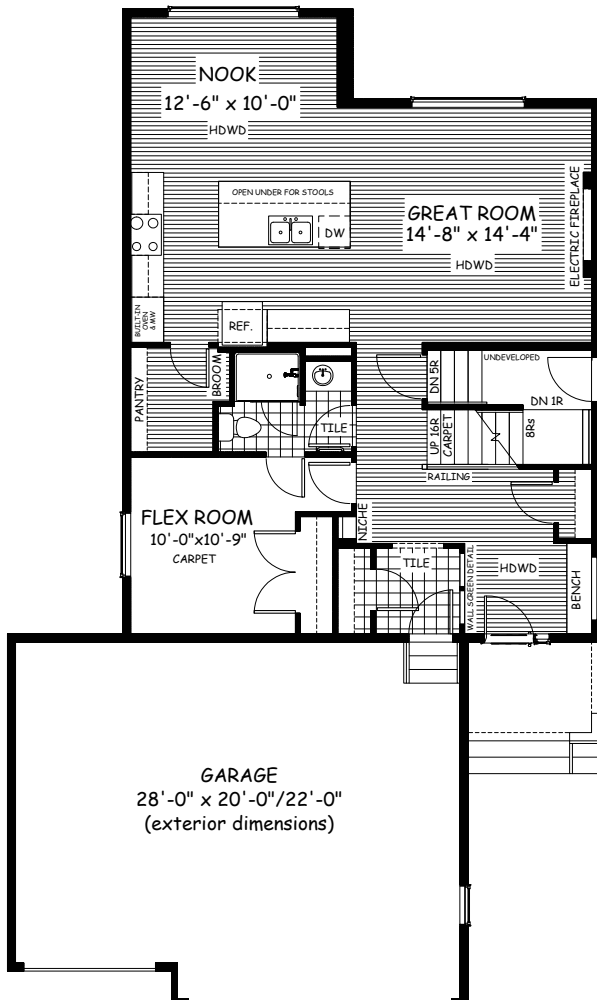
DOUGLAS HOMES

— PERFECT FIT —

## Features

- 4 Beds, 2.5 Baths, Bonus Room, Flex Room
- Master Ensuite has Double Sinks, Tiled Shower, and Two Walk-in Closets
- Boxed Out Gas Fireplace
- Upper Floor Laundry
- 9' Main Floor Ceiling
- Quartz Countertops
- Hardwood on Main Floor w/ Carpet in the Flex Room

**Private Side Entrance**  
**Door to Basement**  
**Triple Car Garage**



[www.douglashomes.net](http://www.douglashomes.net)



Douglas Homes Ltd



@douglashomesltd



@DouglasHomesLtd

Artist's representation, may not be exactly as shown - all dimensions are approximate. Douglas Homes reserves the right to make changes/substitutions to improve this home while under construction. Pricing is subject to change without notice and is valid only on the day of issue. All designs and plans are the exclusive property of Douglas Homes Ltd.