

Monte Carlo 7 - 2191 sq.ft.

148 Precedence View in Cochrane, AB



DOUGLAS HOMES
— PERFECT FIT —

Features

4 Beds, 2.5 Baths, Loft, Flex Room

Master Ensuite has Tub, Tiled Shower, and a Large Walk-in Closet

Electric Fireplace

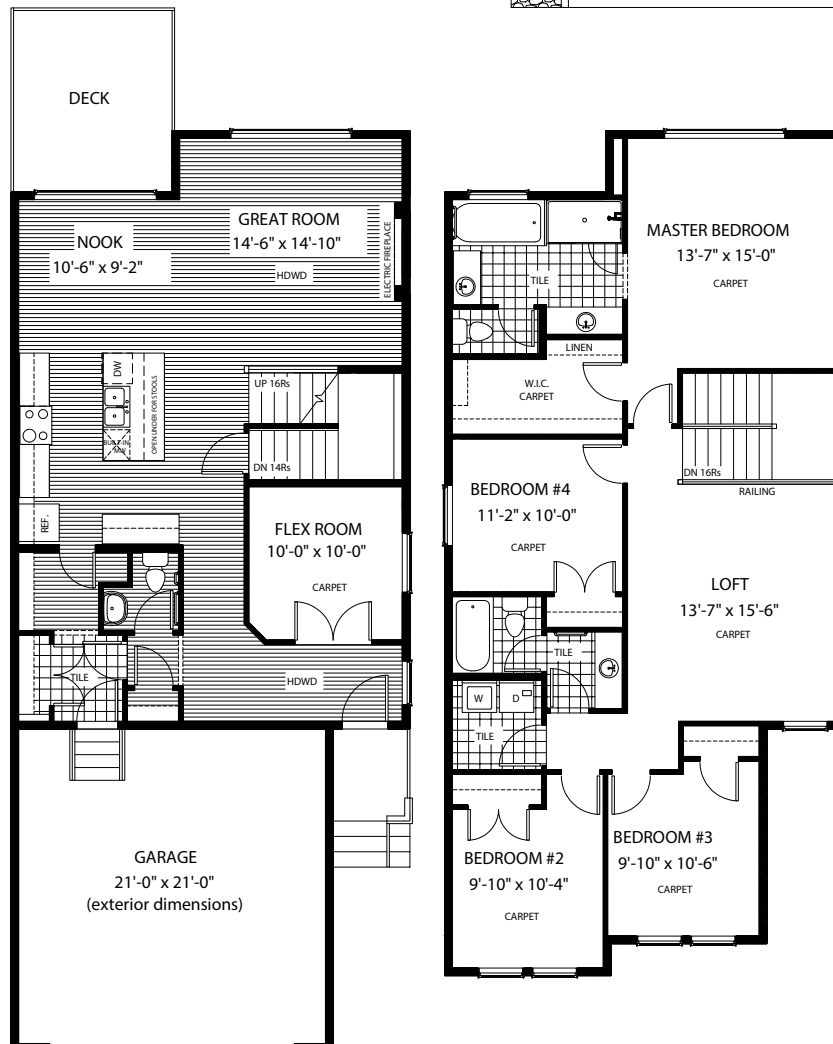
Upper Floor Laundry

9' Main Floor Ceiling

Quartz Countertops

Hardwood on Main Floor w/ Carpet in the Flex Room

Double Car Garage
Walk-Out Basement



www.douglashomes.net



Douglas Homes Ltd



@douglashomesltd



@DouglasHomesLtd

Artist's representation, may not be exactly as shown - all dimensions are approximate. Douglas Homes reserves the right to make changes/substitutions to improve this home while under construction. Pricing is subject to change without notice and is valid only on the day of issue. All designs and plans are the exclusive property of Douglas Homes Ltd.