

Madison 2 - 1786 sq.ft.

209 Marina Key in Chestermere, AB



DOUGLAS HOMES

PERFECT FIT

Features

3 Beds, 2.5 Baths, & Upper Floor Loft

Master Ensuite has Double Vanities, Shower, Drop-in Tub and Large Walk-in Closet

Boxed-in Electric Fireplace

Built-in Foyer Bench

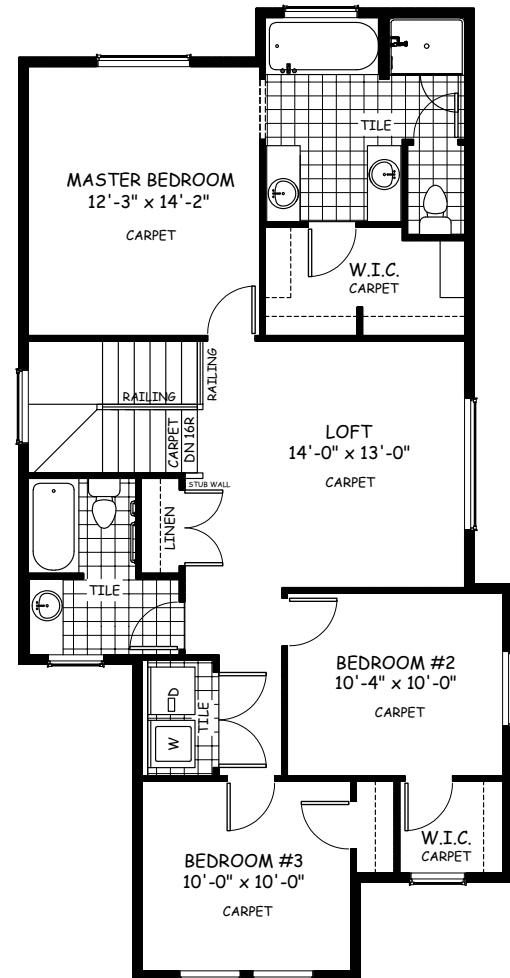
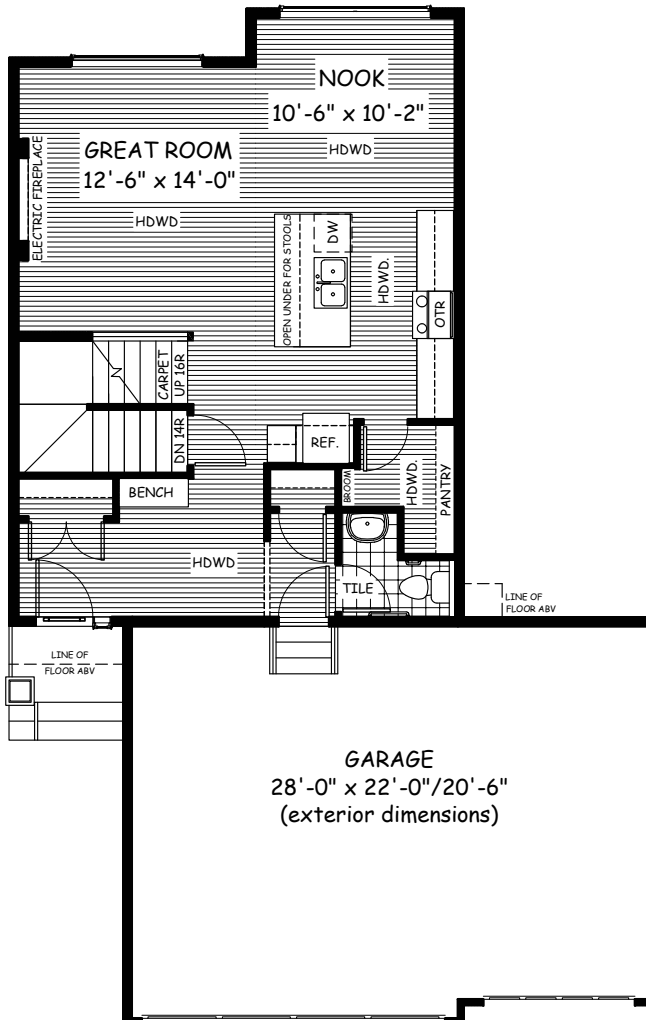
Upper Floor Laundry

9' Main Floor Ceilings

Quartz Countertops

Hardwood Floors throughout Main Floor

Triple Car Garage



www.douglashomes.net



Douglas Homes Ltd



@douglashomesltd



@DouglasHomesLtd

Artist's representation, may not be exactly as shown - all dimensions are approximate. Douglas Homes reserves the right to make changes/substitutions to improve this home while under construction. Pricing is subject to change without notice and is valid only on the day of issue. All designs and plans are the exclusive property of Douglas Homes Ltd.