

Kenmare 1523 sq. ft.

856 Marina Drive

Marina Paradise, Chestermere, AB



DOUGLAS HOMES

PERFECT FIT



Features

No Condo Fees

Large Double Car Garage

3 Bedrooms, 2.5 Bathrooms

Large Upper Floor Loft

9' Main Floor Ceiling

Quartz Countertops

Wrought Iron Railings

Hardwood main

Wall Mount Electric Fireplace

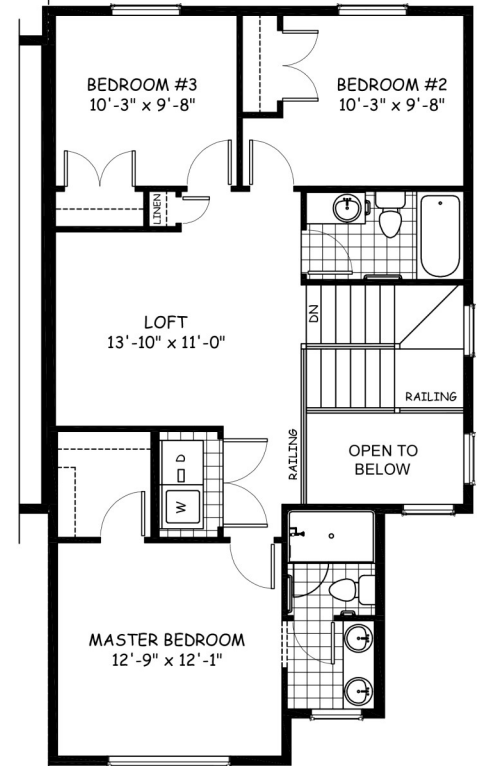
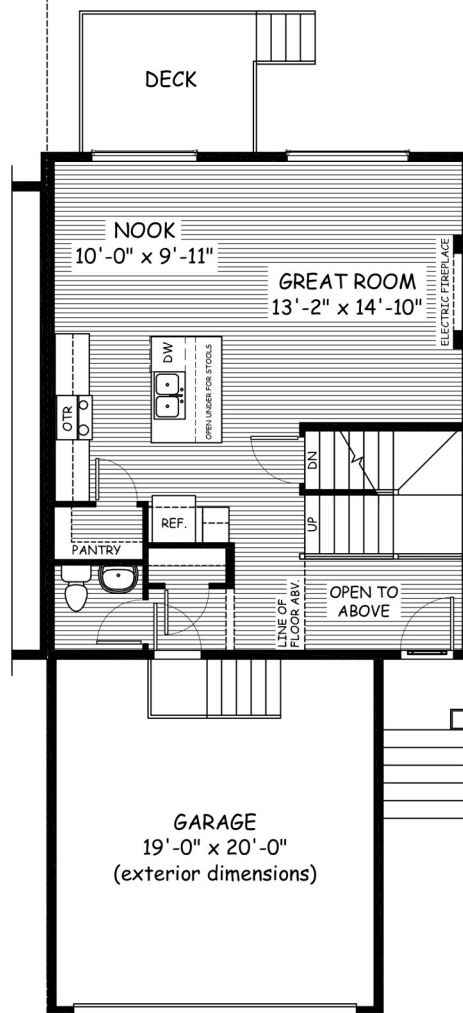
Walk-in Pantry

Double Sinks and Large

Fiberglass shower in Ensuite

Upper Floor Laundry

Treated Wood Deck



www.douglashomes.net



Douglas Homes Ltd



@douglashomesltd



@DouglasHomesLtd

Artist's representation, may not be exactly as shown - all dimensions are approximate. Douglas Homes reserves the right to make changes/substitutions to improve this home while under construction. Pricing is subject to change without notice and is valid only on the day of issue. All designs and plans are the exclusive property of Douglas Homes Ltd.