

the Catalina

1476
sq.ft.



3 bedrooms



2.5 bathrooms



22' wide



NOTES:

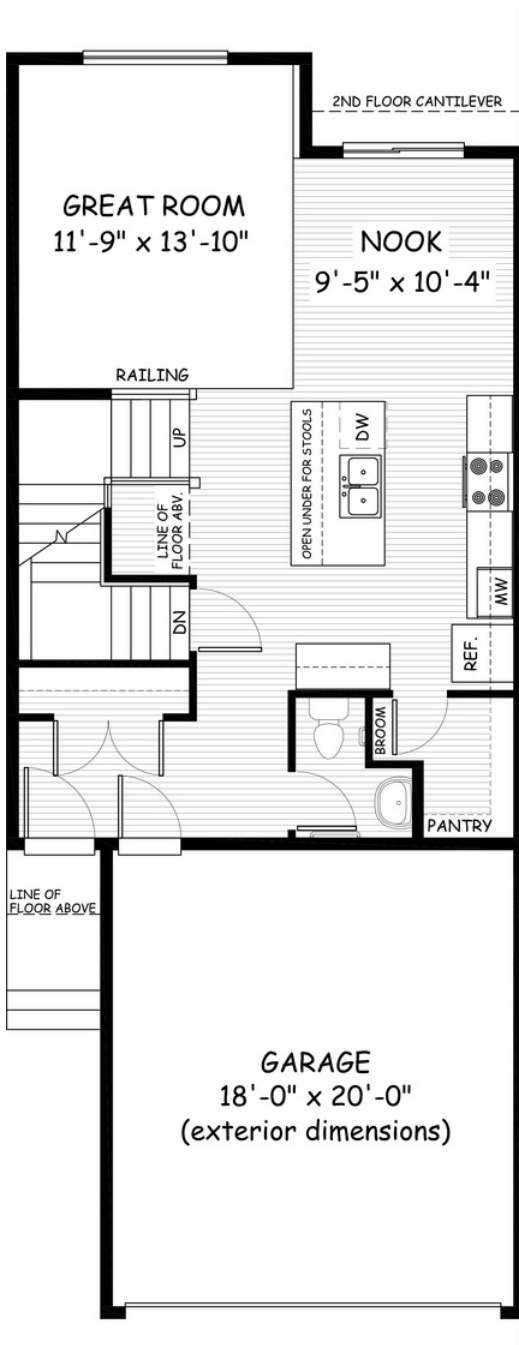


Artists's representation, may not be exactly as shown - all dimensions are approximate. All plans/designs are the exclusive property of Douglas Homes Ltd. Prices are subject to change without notice.

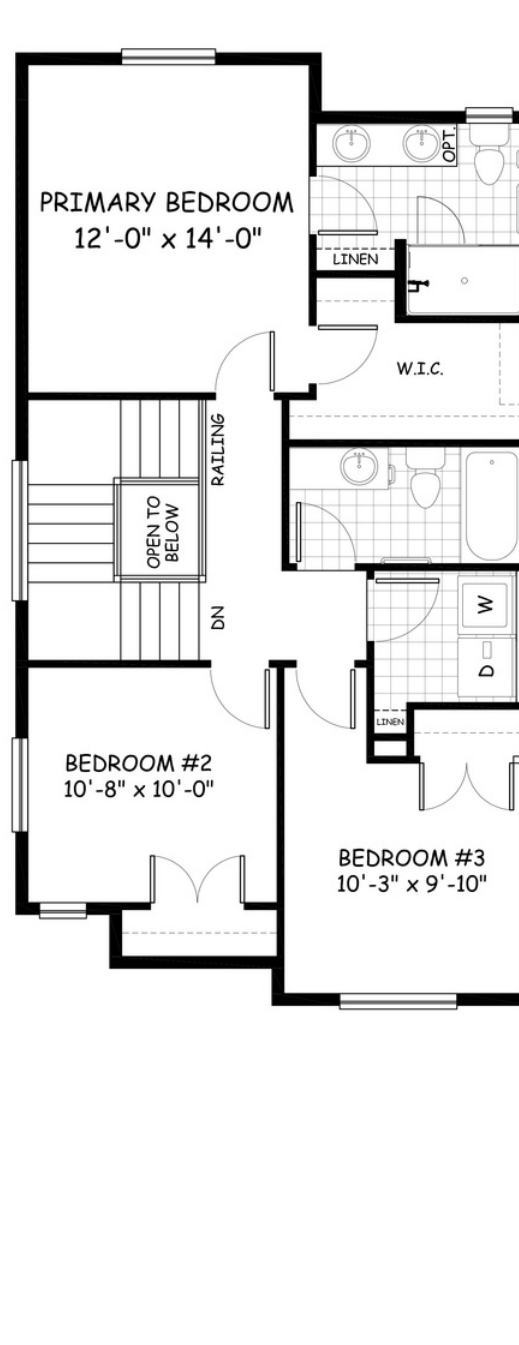
the Catalina

1476 sq.ft.

22' wide
54' long



MAIN
712 sq.ft.



UPPER
764 sq.ft.

June 2021. Artists's representation, may not be exactly as shown and all dimensions are approximate. All plans/designs are the exclusive property of Douglas Homes Ltd. Prices are subject to change without notice.

