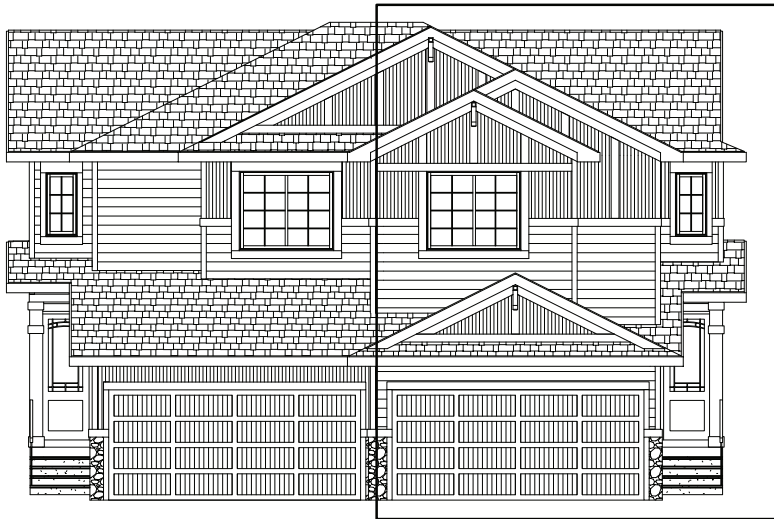


BOW - 1602 sq.ft.

2 Waterford Road, Chestermere, AB



Side View

Features

3 Beds, 2.5 Baths, Loft

Master Ensuite has Double Sinks with a Shower

Large Walk-in Closet

9' Main Floor Ceiling

Large Bright Windows

Quartz Countertops

Large Pantry

Wrought Iron Railings

Hardwood throughout Main Floor

Upper Floor Laundry Room

Linear Electric Fireplace

Large 18'x21' Garage

Private Side Entrance Door

