

Kenmare 1525 sq. ft.

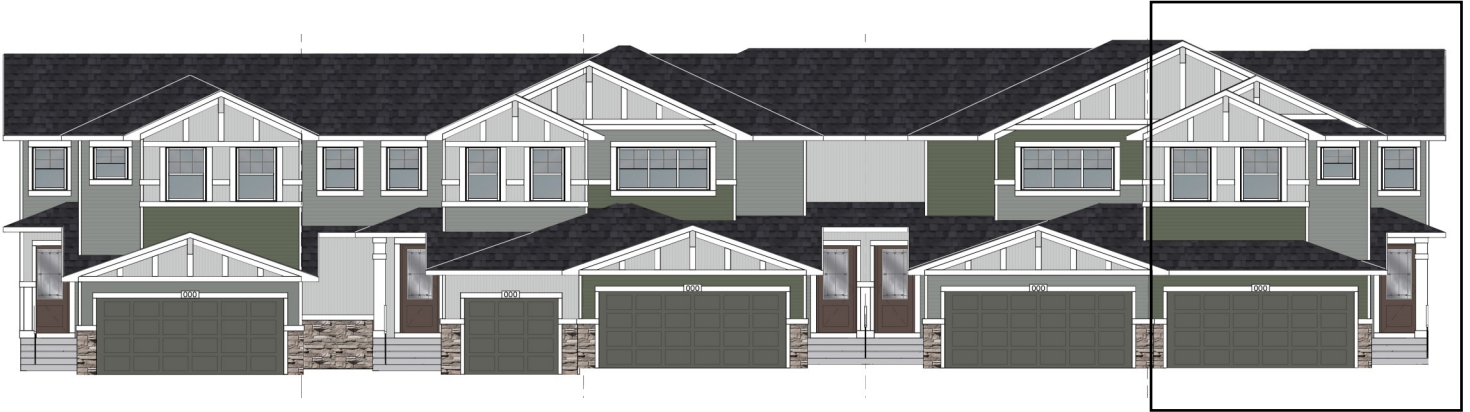
836 Marina Drive

Marina Paradise, Chestermere, AB



DOUGLAS HOMES

PERFECT FIT



Features

No Condo Fees

Large Double Car Garage

3 Bedrooms, 2.5 Bathrooms

Large Upper Floor Loft

9' Main Floor Ceiling

Quartz Countertops

Wrought Iron Railings

Hardwood on Main Floor

Modern Linear Electric Fireplace

Walk-in Pantry

Double Sinks and Large

Fiberglass shower in Ensuite

Upper Floor Laundry

Treated Wood Deck

