


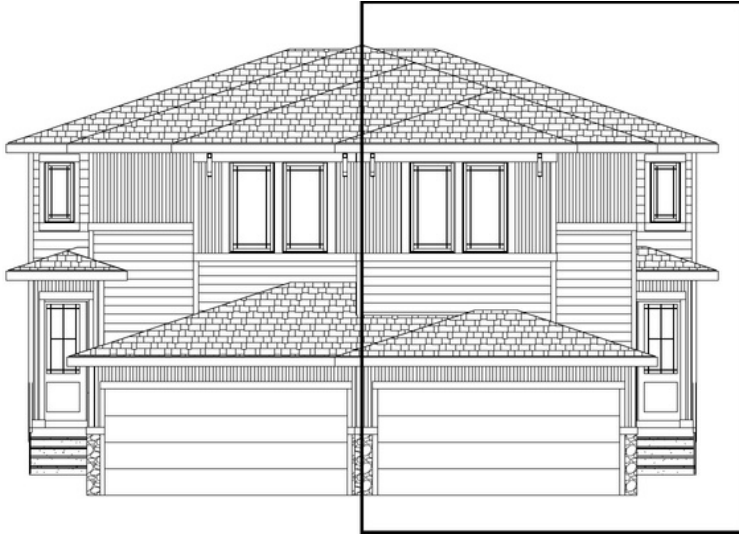
# BOW

10 Waterford Road • Waterford, Chestermere

 1602 sq ft

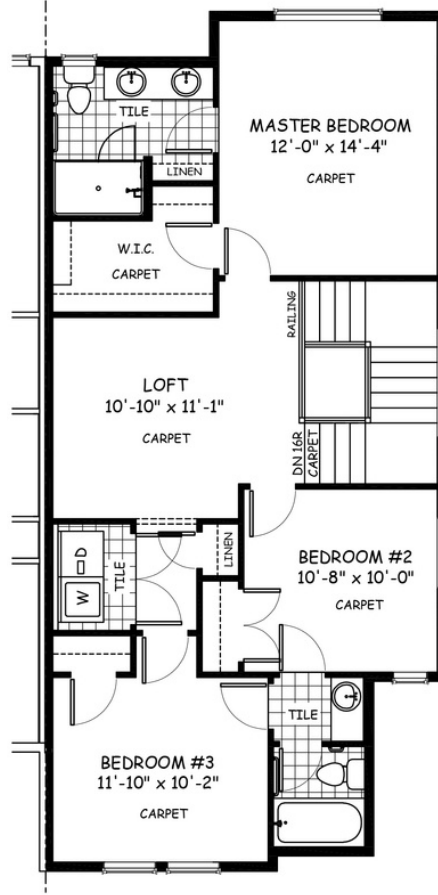
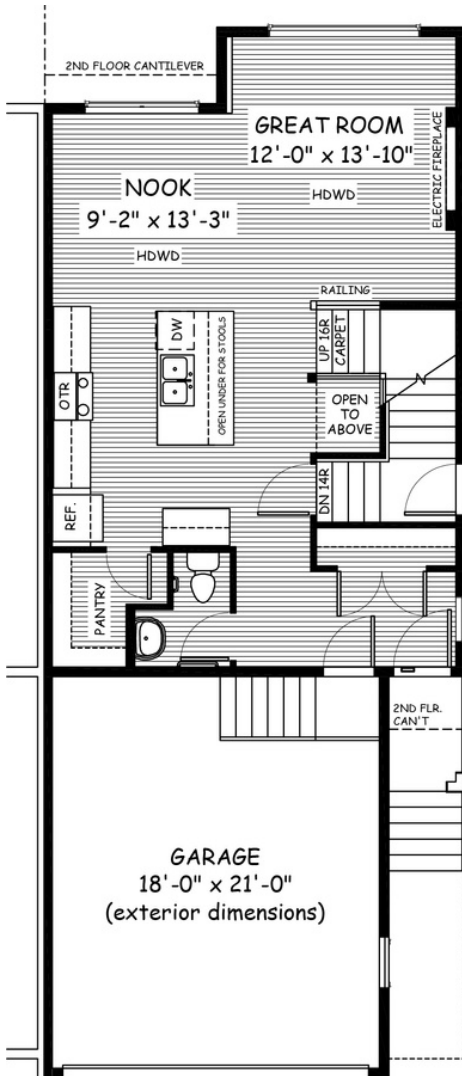
 3 bedrooms

 2.5 bathrooms



## FEATURES

- ✓ Duplex (right unit)
- ✓ Upper floor loft
- ✓ Basement side entry
- ✓ 9' Main Floor Ceiling
- ✓ Quartz Countertops
- ✓ Electric Fireplace
- ✓ Hardwood Floors
- ✓ Upper Floor Laundry
- ✓ Double sinks to Ensuite



## NOTES

---



---



---



---



\*Price includes lot&gst. Price, features & plan are subject to change at any time. All plans/designs are the exclusive property of Douglas Homes Ltd.