


MOUNT RUNDLE

249 Precedence View • Precedence, Cochrane

 2022 sq ft

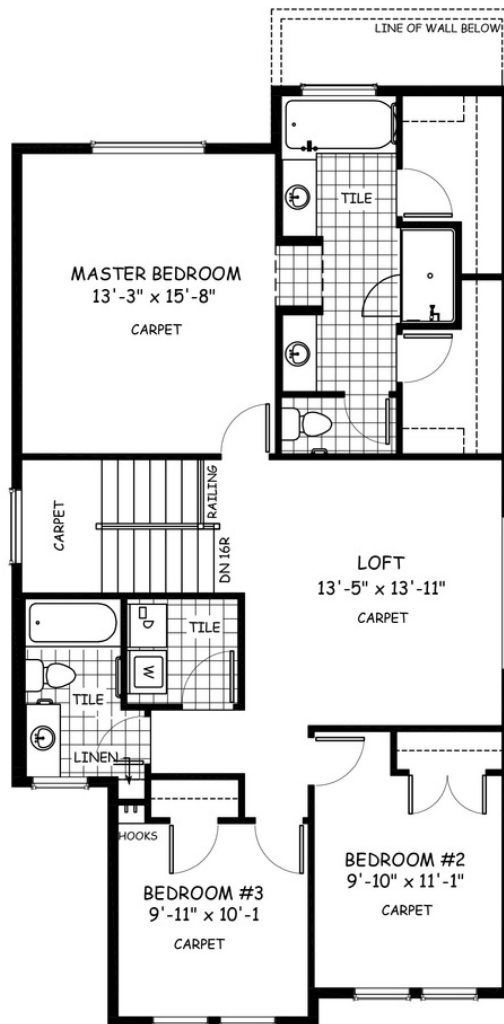
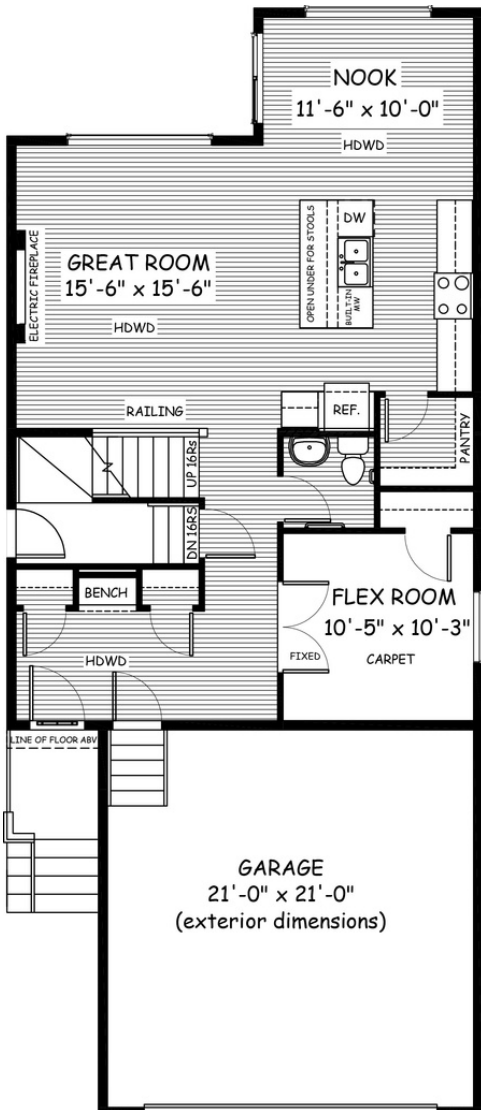
 4 bedrooms

 2.5 bathrooms



FEATURES

- ✓ Basement side entry
- ✓ Upper floor loft
- ✓ 9' Main Floor Ceiling
- ✓ Quartz Countertops
- ✓ Electric Fireplace
- ✓ Hardwood Floors
- ✓ Tile to Baths/Laundry
- ✓ Wrought Iron Railings
- ✓ Double sinks to Ensuite



NOTES



*Price includes lot&gst. Price, features & plan are subject to change at any time. All plans/designs are the exclusive property of Douglas Homes Ltd.