


SYDNEY

308 Lawthorn Way SE • Lanark Landing, Airdrie

 1376 sq ft

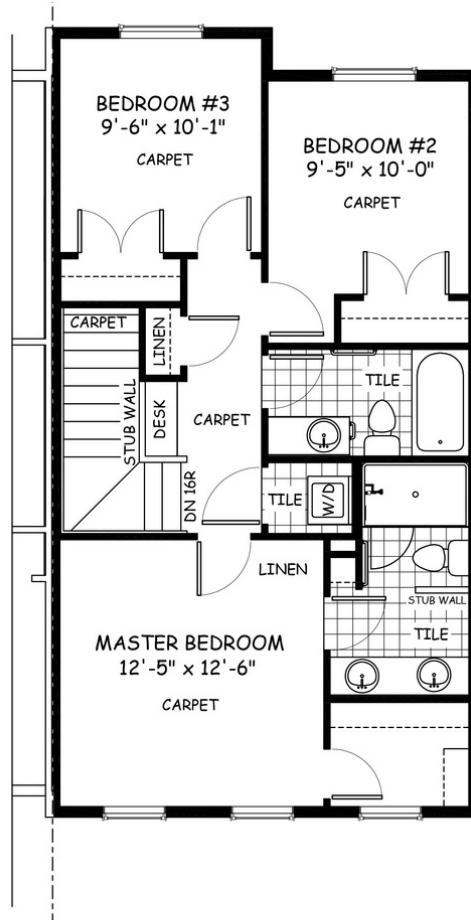
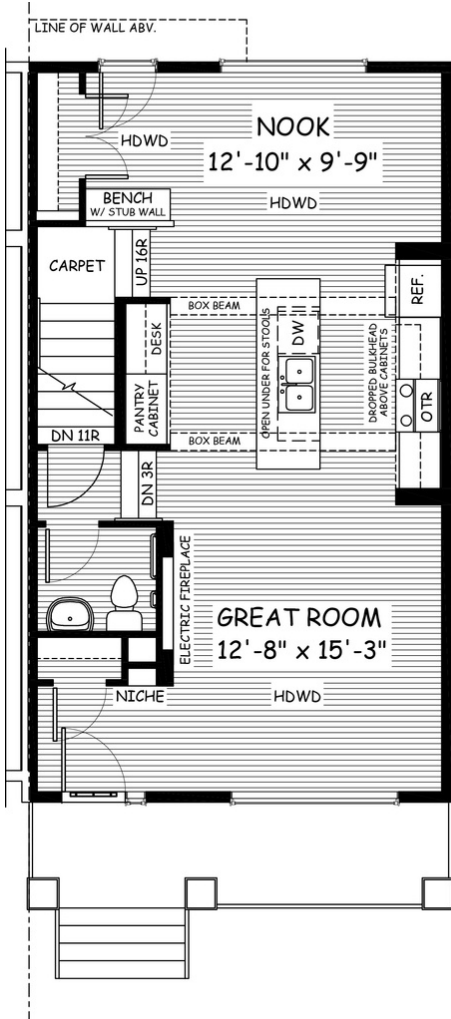
 3 bedrooms

 2.5 bathrooms



FEATURES

- ✓ Semi-Detached (Right Unit)
- ✓ Parking Pad
- ✓ 9' Main Floor Ceiling
- ✓ Quartz Countertops
- ✓ Electric Fireplace
- ✓ Hardwood Floors
- ✓ Upper Floor Laundry
- ✓ Double Sinks to Ensuite
- ✓ Built-in Bench & Desk



NOTES



*Price includes lot&gst. Price, features & plan are subject to change at any time. All plans/designs are the exclusive property of Douglas Homes Ltd.